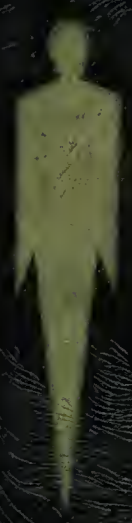




# Treasure Chest



10003











# Rogers on the Move . . . *Graficus*

STAFF EDITOR	DIONE STEWART	Activities Editor	Mary Ann Miller
Associate Editor	Mary Ann Miller	Assistant Activities Editor	Kerry Green
Assistant Senior Editor	Rose Atkinson	Sports Editor	Dave Halsted
Class Editor	Milaine Lake	Assistant Sports Editor	Al Walker
Senior Editor	Kathi Sherman	Faculty Editor	Joanne Gibson
Assistant Class Editor	Marsha Lookabaugh	Business Manager	Marvin Jack
Club Editor	Karen Johnson	Assistants	Kay Hogle, Joanne Mantkus

## Advisors

Annual	Mr. Ormsby
Photography	Mr. Buckley
Business	Mr. Stumpf
Art	Mr. Aller
Cover Design	Cherryl Dinsmore

## TREASURE CHEST

JOHN R. ROGERS

31ST EDITION

1963





MR. MacGOWN

### *Moving On*

You seniors are moving on and out to face new experiences. The rest of us remain but move we must—move to better ourselves and our school. Let us use this chest of treasures to remind us of past glories and with its inspiration move on to even greater successes.

*Paul MacGown*  
PAUL MacGOWN, Principal



MR. ELSENSOHN

### *Rogers on the Move*

Like most modern institutions, Rogers is on the move. New faces, new facilities, new curriculum, and new achievements are before us.

You, the students, and your accomplishments are the key to Rogers' success.

I hope each one of you will take pride in your school, will take advantage of your opportunities, and will move on to a happy and fruitful life.

*James J. Elsensohn*  
JAMES ELSENSOHN, Vice-Principal





LAVELLE BLACK  
Dean of Girls



JOHN JELINEK  
Dean of Boys

### Office Staff



DEE SPRAGUE



KATHERINE O'BRIEN



ARDEN ROWE



HARRIET FOLAND



JULE BISSET

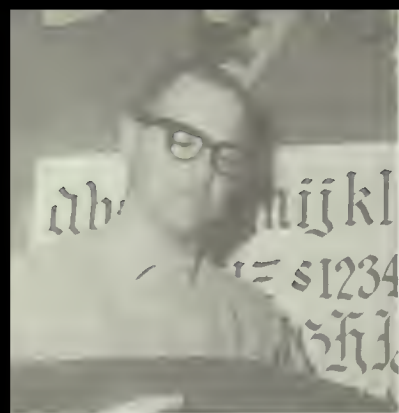


IRENE WELCH

Spokane School Board: Mr. H. Avery Peyton, Mr. George R. Nethercutt, Mr. Oscar C. Santschi, Mr. James E. Winton, Mrs. Mary F. Wurth.

WILLIAM C. SORENSON  
Superintendent of Schools





**WILLIAM ALLER**  
Art Dept. Head



**E. T. BECHER**  
Social Studies,  
Dept. Head



**DALE BRANNON**  
Drama



**FORREST BRIGHAM**  
Music Dept. Head

**T. ARMAND BRIM**  
Social Studies

**FRED BROWN**  
Physical Education

**JAMES BUCKLEY**  
Mathematics

**FRANCIS R. CARROLL**  
Science



**WAYNE CHAPMAN**  
Industrial Arts,  
Dept. Head



**RUTH CHURCH**  
Business Education



**LAWRENCE COLEMAN**  
Science



**JESSIE COOK**  
Business Education



**HAZEL CROSBY**  
Foreign Languages



**JOSEPH CULLER**  
Industrial Arts



**JOHN DOMBROSKY**  
Science



**CARL ELLINGSEN**  
Physical Education,  
Dept. Head







**PATRICIA FINNEY**  
Physical Education



**JAMES FORSYTH**  
Social Studies



**ROBERT FOSTER**  
Music



**THEODORA FRISBIE**  
English

**ERNEST GILLETTE**  
Industrial Arts

**WREATH GOODRICH**  
Library

**A. D. GRAFIOS**  
English

**BART HAGGIN**  
English



**EDITH HANSEN**  
Business Education



**ELIZABETH HERBERT**  
English, Dept. Head



**LEONARD JOHNSON**  
Industrial Arts



**E. G. KIENHOLZ**  
Social Studies

**IMOGENE KNIGHT**  
English

**PEGGY KRAFT**  
Social Studies

**ETHEL LARSON**  
Homemaking

**MARION Le FEVRE**  
Foreign Language,  
Dept. Head





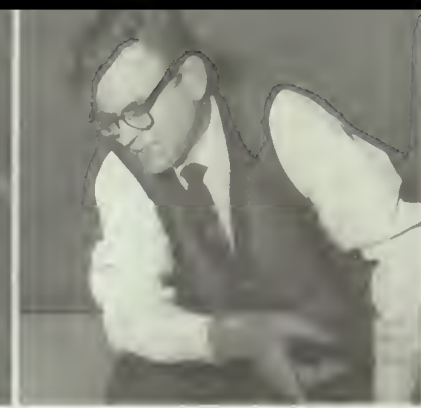
HELEN LELAND  
Girls' Counselor



STANFORD McCLELLAN  
Science



LaVERNE MABBOTT  
Social Studies



ROY MAGDEN  
English

SANDY MAZEN  
Social Studies



HARRY MERRICK  
Science



MARVEL MILLER  
Homemaking



GEORGE MOLCHAN  
Study Hall



ELLA MOYER  
Homemaking



DUNCAN ORMSBY  
English



ALFRED OSTNESS  
Mathematics  
Dept. Head



KENNETH PELO  
Social Studies

BETTY PENCE  
Foreign Language



CLIFFORD PINE  
English



ROBERT POFFENROTH  
Social Studies



MAVIS PROCTER  
Homemaking







**ELIZABETH RAYMER**  
Library



**JOE RAYMOND**  
Mathematics



**RITA RUBENS**  
Foreign Language



**LEWIS SABO**  
Science, Dept. Head

**LORRAINE SCHWARTZ**  
Business Education

**LENA SCHMIDT**  
English

**MAUDE SCOFIELD**  
English

**FRANCES SCOTT**  
English



**PAUL SHUMAKER**  
Study Hall



**HERMAN SLEIZER**  
Social Studies



**ROBERT SMICK**  
Business Education



**LOUISE SMITH**  
Social Studies

**ROBERT SNIDER**  
Art

**DALE SPURGEON**  
Industrial Arts

**J. M. STOVER**  
Social Studies

**MILTON STUMPF**  
Business Education,  
Dept. Head





**HAROLD THOMPSON**  
Mathematics



**B. E. TOTH**  
Science



**VERNICE TRAVIS**  
Physical Education,  
Dept. Head



**HAZEL VAN DOREN**  
Business Education



**TRACY WALTERS**  
Boys' Counselor



**GERALD WEITZ**  
Journalism



**FAYE WEYMOUTH**  
Mathematics

### *Custodians*

**First Row.** Mrs. Katherine Jilbert—Matron, Ed Glowen—  
Asst. Eng., Mahlon Bennett—Cust. Foreman, Gary  
Carroll—Head Cust. Eng.

**Second Row.** Asst. Cust. Roland Sherman, Fred Revious, Paul  
Larsen, Frank Tietler, and Louis Ruthoff.

### *Cafeteria Personnel*

**First Row.** Nina O'Keef, Ann Ludwig, Mabel Nelson, and Martha Kar

**Second Row.** Ratchel Larsen, Ruth Huston, Martha Kingery, Georgia Tib  
Ellen Clough.





# SENIORS



on the move



**ABELL, BERTHA DARLENE**  
"Darlene"  
Business Ed. North Central  
Homeroom Sec. 4; Big Sister 3, 4;  
Elections Comm. 4; P.E. Checker 2;  
Red Cross 2, 3; Girls' League  
Rep. 2; Girls' Glee 2; Mother Is  
A Freshman 3; Tom Sawyer 4;  
Come Rain or Shine 4.

**ADER, JUDY** "Judy"  
Science Whitman  
Femme Sportettes 1, 2; F.T.A. 1;  
Spanish Club 3, 4; Homeroom of-  
ficer; Big Sister 4; Pep Club 1, 2;  
Clean Up Comm.; Girls' League  
1, 2, 3, 4; A.S.B. 1, 2, 3, 4.



**ALDRICH, ROBERT BRUCE**  
"Bob"  
Science Shaw  
Football 2, 3, 4; Baseball 2, 3, 4;  
Basketball 2; Homeroom offices 3;  
Boys' Fed. Chrmn. 3, 4; Car Pa-  
trol 3; "R" Club 3, 4; Ticket Seller  
4; Student Council 2; Hall Patrol  
3; Freshman Initiation Con 4.

**ALLEN, ROBERT JAMES** "Bob"  
Science Longfellow  
Track 1, 2; Wrestling 1, 2; Boys'  
Fed. 1, 2, 3, 4; Ticket Seller 4.



**ANDERSON, JOHN ARVID**  
"Arv"  
Science Longfellow  
Boys' Fed. Pres. 4; Hi-Y Pres. 3,  
4; Track 1, 2, 3, 4; Cross Country  
1, 2, 3, 4; "R" Club 3, 4; Dad's  
Night 2, 3, 4; Athletic Patrol 4;  
Latin Club 1; Spanish Club 2;  
Honor Roll 1, 2, 3, 4; Frosh, Soph.  
orientation 4; A.S.B. 1, 2, 3, 4.

**ANDERSON, BRADLEY PAUL**  
"Brad"  
Math Longfellow  
National Honor Society 3, 4; Foot-  
ball 1, 2; Baseball 1, 2; Basketball  
2, 3, 4; Golf 4; Freshman Math  
Contest first place; Hi-Y; Boys'  
Fed. Sec. 3; Intramural Sports 1;  
Boys' State; Homeroom offices;  
Junior Math Club 2; Senior Math  
Club 3, 4; Dad's Night 3; Boys'  
Fed. Publicity Chrmn. 4.

**ANDERSON, WILLIAM ARTHUR**  
"Bill"  
Science Longfellow  
Homeroom Officer 1, 2, 3, 4; Hi-Y  
4; Senior Math Club 3; Boys' Fed.  
1, 2, 3, 4.

**ARNETT, LARRY** "Larry"  
Math Shaw  
Spanish Club 3, 4; Boys' Fed. 2,  
3, 4; A.S.B. 2, 3, 4; Red Cross 2,  
3, 4.



**ARNOLD, VELMA DIANE**  
"Velma"  
Home Economics Shaw  
F.N.A. 2, 3, 4; J.A. 3, 4; Girls'  
League 2, 3, 4; A.S.B. 2, 3, 4.

**ASTLEFORD, LINDA KAY**  
"Lindy"  
English Shaw  
F.B.L.A. 3, 4; Pep Club 2, 3; Girls'  
League 3, 4; Study Hall Checker  
3, 4; Postage Stamp Comm. 3;  
Honor Roll Comm. 3; Tutoring  
Comm. 4; Big Sister 4; Library  
Rep. 3; A.S.B. 3, 4.



**BABBITT, SALINDA F.** "Salinda"  
Science Hamilton  
Cafe. Comm. Chrmn. 4; A.S.B.  
Rep. 1; Girls' League Rep. 3; Tal-  
ent Con 3; Pep Club 1, 2; F.M.D.A.  
1; Charity Drives 1, 2; Office  
Worker 4; Frosh girls' tea model;  
P.T.S.A. Rep. 1, 2; Study Hall  
Checker 3; Girls' League Commit-  
tees.

**BABCOCK, EUGENE E.** "Gene"  
Math Shaw  
Hi-Y 4; Boys' Fed. 2, 3, 4; A.S.B.  
2, 3, 4; Red Cross 2, 3, 4.





**BARNES, ETHEL**

Business Ed.

**"Edie"**

Shaw

Big Sister 3, 4; Morning Girls 3;  
Lost and Found 3; Pep Club 2, 3;  
F.N.A. 2, 3, 4; F.B.L.A. 3; Red  
Cross Rep. 3; D.E.C.A. 4; A.S.B.  
2, 3, 4; Study Hall Checker 4;  
Cafe. Comm. 4.

**BELL, ERNEST JAMES**

Science

**"Ernie"**

Shaw

Boys' Fed. 2, 3, 4; A.S.B. 2, 3, 4.

**BENZEL, LARRY VICTOR**

Science

**"Benz"**

Longfellow

Basketball 1, 2, 3, 4; Football 1, 2;  
Golf 4; Homeroom officer 1, 2, 3;  
Conductor Chrmn. 3; Ticket Sell-  
er Chrmn. 4; Homecoming Escort  
2; Boys' Fed. 1, 2, 3, 4; Car Patrol  
3.

**BARR, ROBERTA ANN**

Home Economics

**"Birdie"**

Shaw

Pirettes 3, 4; Senior Math Club  
3, 4; F.H.A. 2, 3, 4; Spanish Club  
3; Elections 3; Tutoring Comm. 3;  
Lost and Found Chrmn. 4; Cove  
Kitchen Comm. 3; Pep Club 2; Big  
Sister 4; Study Hall Checker 2;  
Girls' League Rep; Cafe. Comm.  
3, 4; Girls' League 2, 3, 4; A.S.B.  
2, 3, 4.

**BENNETT, SALLY JO**

History

**"Sally"**

Hamilton

Girl of the Month; Girls' Glee 1;  
Choir 1, 2, 3, 4; Triple Trio 2, 3,  
4; Big Sister Sec. 3; Big Sister  
Chrmn. 4; Pins and Points Comm.  
1; Usherettes 2; Pirettes 2, 3, 4;  
Greetings Chrmn. 3; Homeroom  
officer; Senior Mothers Tea Comm.  
3; A.S.B. 1, 2, 3, 4; Girls' League  
1, 2, 3, 4; F.B.L.A. 3; Cafe.  
Comm. 3; Girls' League Rep. 2.  
A.S.B. Sec. 4.

**BIRCUMSHAW, HAROLD**

Math

**"Butch"**

Shaw

National Honor Society 3, 4; Boys'  
Fed. Treas. 3; A.S.B. Vice Pres. 4;  
R Club; Boys' State; Honor Roll  
3, 4; Baseball 2, 3, 4; Basketball 2,  
3, 4; Tennis 4; Homeroom Pres. 3,  
4; Student Council Rep. 3; Pins  
and Points 2; R Week Date 2.

**BITHELL, SUSAN JOANN**

Greeley High

Girls' League 4; A.S.B. 4.

**BLUE, TERRY RAYMOND****"Terry"**

History Whitman  
Choir 2, 3, 4; Quartet 2, 3, 4;  
Baseball Mgr. 2, 3, 4; Football  
Mgr. 3; Choir officer 3, 4.  
Boys' Fed. Treas. 4.

**BLUM, LINDA RAE**

English

**"Linda"**

Arlington

Elections comm. 4; Big Sister 4;  
Pirettes 4; Senior Math 3, 4; Gym  
Checker 3; Cotton Cutie Candi-  
date 2; One Act Plays 2; Sports  
Queen Ticket Seller 2; Booster and  
Betterment 2; Girls' League 2, 3,  
4; A.S.B. 2, 3, 4.

**BONDY DWIGHT C.**

Art

**"Von"**

Greenacres Jr. High

Annual Cover 3; A.S.B. 1, 2, 3, 4;  
Boys' Fed. 1, 2, 3, 4.

**BORDWELL, DUANE**

English

**"Duey"**

Shaw

Boys' Fed. 2, 3, 4; Band 2, 3;  
Baseball 2, 3, 4; R Club 3, 4;  
A.S.B. 2, 3, 4.

**BOSSIO, JOYCE KATHLEEN****"Joyce"**

Business Ed. Holy Names Academy  
A.S.B.; Girls' League.

**BOTTEEN, SUSAN WANONA****"Susan"**

Math

Hamilton

National Honor Society 3, 4; Pi-  
rettes 3; Pep Club 1, 2; Senior  
Math Club 3, 4; French Club 2, 3,  
4, Sec. 3; Tutoring Comm. Chrm.  
3; Aviation Club 1, Sec. 1; Home-  
room offices 1, 2, 3, 4, Pres. 1;  
Study Hall Checker 3; Points and  
Recorders 3; Scrapbook 4; Voca-  
tions Comm. 3; Evaluations 4; Tro-  
phy Case 2; Big Sister 3, 4.

**BOWLBY, BETTY LOUISE****"Betty"**

History

Sandpoint Jr. High

Girls' League 2, 3, 4; Girls' Glee  
2, 3, 4; A.S.B. 2, 3, 4.

**BOWMAN, JAMES JOSEPH****"Stubby"**

English

Gonzaga

Boys' Fed. 3, 4; Football 3, 4; Frosh  
Initiation 4; Hall Patrol 3, 4; Stair  
Patrol 4; Homeroom Officer 4.

**BRINKMAN, RONALD  
CHRISTOPHER****"Ron"**

Science

Glover

Tennis 1, 2, 3, 4; Radio Club 1, 2;  
Homeroom officer 1; Boys' Fed. 1,  
2, 3, 4.

**BROOKS, LORRAINE****"Lorie"**

Art

North Central

Talent Club; Girls' League Office  
4; Red Cross Entertainment at  
Fairchild 3.

**BROWN, BETTY MAE****"Betty"**

Business Ed.

Bemiss

Sports 1, A.S.B. 1, 2, 3, 4; Girls'  
League 1, 2, 3, 4; Big Sister;  
Y.F.C. Bible Club; Library Worker.

**BROWN, FREDRICK D.****"Fred"**

Math

Whitman

Boys' Fed. Comm. Chrmn. 4; Stu-  
dent Council Rep. 1, 2, 3, 4;  
Wrestling 2; Track 3; Boys' Fed.  
Comm. 1, 3, 4; Band 1, 2; Senior  
Math Club 4; Homeroom offices.

**BROWN, SANDY MAE****"Sandy"**

Home Economics

Longfellow

F.B.L.A. 3, 4; Usherettes 4; Girls'  
League Worker 2; Pins and Points  
1; Tag Day Sales 1; D.E.C.A. 4;  
Girls' League 1, 2, 3, 4; Choir 4;  
Study Hall Checker 2; Red Cross  
Rep. 1; Nurses Asst. 2; Lost and  
Found Comm. 2.

**BUCHANAN, JAMES KENNETH****"Jim"**

English

Regal

Boys' Fed. 2, 3, 4; A.S.B. 2, 3, 4.

**BURNETTE, JAMES MARVIN****"Jim"**

History

Lidgerwood

Football 1, 2, 3, 4; Track 1, 2, 3, 4;  
Traffic Patrol 3, 4; R Club 3, 4;  
Boys' Fed. 1, 2, 3, 4; A.S.B. 1, 2,  
3, 4.

**BURNETTE, MARY THERESA****"Mighty Mouse"**

English

Lidgerwood

Girls' Glee officer, Sarg.-at-arms  
2; Talent Comm. 2; Variety Show  
2, 3; Homeroom Pres. 3; Home-  
room Vice Pres. 4; Girls' Glee  
Pres. 3; Charity Drives 4; Red  
Cross 3; F.B.L.A.; Pep Club 1.

**BUSH, NANCY JEAN****"Nancy"**

History

Whitman

Song and Cheerleader 4; Honor  
Roll; Pi-ettes 2, 3, 4; Senior Math  
Club 3, 4; Tres. 3; Pi-ette Exec.  
board 3, 4; Pep Club 1; Big Sister  
3, 4; Powder Puff Football 3; Big  
R Week Date 2; Girls' League  
Worker 3; Elections comm. 3, 4;  
Usherettes 2, 3; Style Trends  
model 3; A.S.B. Rep. 3; Girls'  
League Rep. 1.





**BUSHY, MARILYN** "Marilyn"  
History Marycliff  
F.H.A. 4; Big Sister 4; Girls'  
League 2, 3, 4; A.S.B. 2, 3, 4.

**BYRUM, DAVID** "David"  
History Arlington  
Boys' Fed. 2, 3, 4.



**CAIRD, CHERYL** "Cherrie"  
Science Shaw  
Livewires 4; F.N.A. 3, 4; Girls'  
League Rep. 4; Library Worker 3;  
Red Cross Rep. 3; F.B.L.A. 4; Pi-  
rettes; Big Sister 4.

**CALLIHAN, DAVID LEROY** "Dave"  
History Colville  
Homeroom officer; A.S.B.; Boys'  
Fed.



**CARLSON, JOAN** "Joanie"  
History Wahpetow Hi, N. D.  
Girls' Glee 3; F.B.L.A. 4; A.S.B.  
3, 4; D.E.C.A. 4; Girls' League.

**CARNEY, MARJORIE ANN** "Ann"  
History North Central  
Girls' League 3, 4; A.S.B. 3, 4.



**CARR, RICHARD** "Dick"  
Science St. Aloysius  
Boys' Fed. 2, 3, 4; Boys' Fed. Rep.  
3; Choir 3, 4; Boys' Quartet 3, 4;  
A.S.B. 2, 3, 4.

**CARVER, CARMITA** "Carmita"  
Business Ed. Shaw  
A.S.B.; Girls' League.



**CHEVIGNY, NANCY ANNE** "Nance"  
Science Whitman  
Pep Club 1; Big Sister 3, 4; Hon-  
or Roll 1, 3; Guidance office 4;  
Girls' League Rep. 2; A.S.B. Rep.  
4; Usherettes 4; Courtesy Comm.  
Chrmn. 3; Style Trends model 1,  
2; Homeroom Pres. 1, V. Pres. 2;  
French Club 3; Postage Stamps 2;  
Science Fair, Hon. Mention 2;  
Elections 3, 4; Lost and Found 2.

**CHRISTENSEN, CHERYL** "Cheryl"  
Business Ed. Arlington  
Pep Club 2; F.B.I.A. 2, 3, 4; Big  
Sister 3, 4; Girls' League 2, 3, 4;  
Homeroom Sec.-Treas. 3, 4; At-  
tendance office 4; Shop office 3.



**CHRISTOPHER, ANN LEE** "Annie"  
History Spokane Lutheran  
F.N.A. 4; Pep Club 1, 2; Big Sister  
4; Girls' League 3, 4; Bookroom  
3, 4.

**CLARK, BRUCE WAYNE** "Bruce"  
English Regal  
A.S.B. 2, 4; Boys' Fed. 2, 4.



**CLARK, FREDERICK E. "Fred"**  
Math Hamilton  
Student Council Rep. 2, 3; Boys'  
Fed. 1, 2, 3, 4; A.S.B. 1, 2, 3, 4;  
Track 1; Hall Patrol 3.

**CLARK, PEGGY LEE "Peg"**  
Business Ed. Lidgerwood  
F.B.L.A. 2; Gym Checker 2; Atten.  
worker 2; Girls' League 1, 2, 3, 4;  
A.S.B. 1, 2, 3, 4; Red Cross 1, 2,  
3, 4.



**CLAUSON, SANDRA "Sande"**  
Business Ed. Hamilton  
Pep Club 1; Big Sister 4; Atten.  
office 4; Girls' League 1, 2, 3, 4;  
F.B.L.A. 4; Study Hall Checker 3;  
A.S.B. 1, 2, 3, 4; Charity Drives  
comm. 1, 2; Bookroom worker 2;  
Latin Club 1.

**CLOTHIER, LORNA JEAN**  
"Lorna Doone"  
History Shaw  
Choir 3, 4; Girls' Glee 2; Ski Club  
3, 4; French Club 4; Color Day  
comm. 2; Pep Club 2; F.B.L.A. 4;  
Big Sister 4; Solid Gold Cadillac  
2; Anastasia 3.

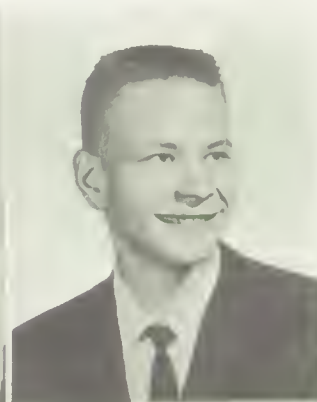


**COBLE, DUANE LESLIE "Duane"**  
Science Whitman  
Aviation Club 1, 2, 3, 4; Junior  
Math 1, 2; Senior Math 3, 4; Rec-  
reation Club 2, 3, 4; Boys' Fed. 1,  
2, 3, 4.

**COCHRAN, KAREN KAY**  
"Karen"  
Business Ed. Whitman  
F.H.A.; Study Hall Checker 2;  
Homeroom officer; Big Sister.

**CONKLIN, DONALD O. "Don"**  
Science Bemiss  
Boys' Fed. 2, 3, 4; A.S.B. 2, 3, 4;  
Red Cross Rep. 2, 3.

**COOK, CRAIG LORON "Craig"**  
Business Ed. Longfellow  
Rifle Club 1; Hall Patrol 2; Boys'  
Fed. 1, 2, 3, 4.



**COON, STEVEN DOUGLAS**  
"Steve"  
Math Shaw  
Con Chrmn. 4; Con comm. 3;  
Boys' Fed. Con co-Chrmn. 3;  
Dance comm. 4; Student Council  
3, 4; Boys' Fed. Pins and Points  
Chrmn. 4; Football 2, 3, 4; Bas-  
ketball 2, 3, 4; Homeroom Pres.,  
Sgt.-at-Arms 2, 3; Spirit comm. 3.

**COUMONT, AL JAMES "Mike"**  
English Bemiss  
Baseball 2, 3, 4; Choir 3, 4; Home-  
room officer 3.



**COUNTRYMAN, GAIL RAE**  
"Gail"  
Home Economics Shaw  
Homeroom V. Pres. 3; Study Hall  
Checker 3; Atten. office worker 4;  
Bookroom worker 3; Girls' League;  
A.S.B.

**CRAWFORD, JAMES JOSEPH**  
"Jim"  
Math Gonzaga Prep  
A.S.B. 4; Boys' Fed. 4; Basketball  
4; Homeroom officer 4; Hall Pa-  
trol; Glee Club 4; Con comm.





**CROW, MARJORIE ANNE** "Marjorie"  
Home Economics Shaw  
F.N.A. 2, 3, 4; Red Cross Rep. 3;  
Choir 2, 3, 4; Y.F.C. 3, 4; Cafe.  
worker 3, 4; Girls' Glee 2; Girls'  
League 2, 3, 4; A.S.B. 2, 3, 4.

**CUTLER, JAMES KENNETH** "Jim"  
English Longfellow  
Rifle Club 1, 2, 3; Hall Patrol 1,  
2; Homeroom Sgt.-at-Arms 3, 4.

**DEAHL, DIANE LYNN** "Diane"  
Home Economics Regal  
A.S.B. Sec. 4; Pirettes 2, 3, 4, Sec.  
4, Exec. Board 4; Twinlow Rep. 3;  
Cotton Cutie 3; French Club 3, 4,  
Corres. Sec. 3; F.H.A. 2; F.T.A.  
2, 3, 4; Homeroom offices; Big  
Sister 3, 4; Style Trends model 3;  
A.S.B. comm. 2, 3, 4; Study Hall  
Checker 2; Homeroom Pres. 2;  
Honor Roll; Charity Drives; Sr.  
Mothers' Tea comm.

**CULVER, DOUGLAS GENE** "Douglas"  
History Shaw  
Boys' Fed. 2, 3, 4; A.S.B. 2, 3, 4;  
Hall Patrol 2; Track 3.

**DAVIS, TERRY** "Terry"  
English Hamilton  
A.S.B.; Boys' Fed.

**DeLOZIER, LENISE DALE** "Lenny"  
Math Riverside  
A.S.B.; Boys' Fed.

**DeRUSHA, RODNEY LEE** "Rod"  
Business Ed. Gonzaga Prep  
Boys' Fed. 2, 3, 4; A.S.B. 2, 3, 4;  
Homeroom officer 3, 4.

**DILLON, ROGER RALPH** "Roger"  
History Hamilton  
Baseball 1, 2, 3, 4; Basketball 1, 2,  
3, 4; Football 1; Homeroom Pres.  
1, 4; R Club 3, 4.

**DINSMORE, ROD** "Rod"  
History Whitman  
Football 1; Boys' Fed. 1, 2, 3, 4;  
A.S.B. 1, 2, 3, 4; Aviation Club 1;  
Photo Staff 3; D.E.C.A. 4.

**DEVITA, LARRY** "Larry"  
English Whitman  
A.S.B.; Boys' Fed.

**DINSMORE, CHERRYL JAN** "Cherryl"  
Foreign Language Whitman  
Big Sister 3, 4; French Club 2, 3,  
4, Pres. 3; Senior Math Club 3,  
4; Homeroom offices 1, 2, 3, 4,  
Pres. 3; Pep Club, 1, 2; Honor Roll  
1, 2, 3, 4.

**DIXON, PERRY KAY** "Perry"  
History Whitman  
Football 1, 2, 3, 4; Baseball 1;  
Basketball 1, 2; Homeroom Of-  
fices; Speech Contest Winner;  
Wrestling 3, 4.





**DODGE, LESTER REED** "Les"  
Science Shaw  
Biology Club 3, 4, Pres. 4; Y.F.C.  
2, 3, 4; Boys' Fed. 2, 3, 4; A.S.B.  
2, 3, 4.

**DOLAN, WAYNE ELLIOTT** "Wayne"  
History Longfellow  
Homeroom officer 1, 2, 3; Stu-  
dent Council 2; Boys' Fed. Rep.  
1; Hall Patrol 2.



**DOYLE, LESLEY MARIE** "Les"  
Business Ed. Lidgerwood  
Girls' League 1, 2, 3, 4; A.S.B. 1,  
2, 3, 4; F.H.A. 2; Study Hall  
Checker 2, 3; Pirates' Cove 2.

**DOMITROVICH**  
**AUGUST JAMES** "Jim"  
Industrial Arts Whitman  
Boys' Glee 1; Boys' Fed. 2, 3, 4.



**DURFEE, DIANA RUTH** "Diana"  
English Sanger Hi, Calif.  
F.N.A. 2, 3, 4; Red Cross Rep. 3.

**DORAN, MICHAEL** "Mike"  
Music Longfellow  
Band 1, 2, 3, 4; Orchestra 2, 3, 4;  
Privateers 3, 4; Music Council 3;  
Band Treas. 3; Speech Contest 2;  
Student Council 2, 3; Senior Math  
Club 3.

**ELLEFSEN, MARY GEROLDINE**  
"Gerri"  
Business Ed. Holy Names Academy  
F.N.A. 4; F.B.L.A. 4; A.S.B. 3, 4;  
Girls' League 3, 4; Red Cross 3, 4.

**EMERY, JEAN VI ANN** "Scotti"  
Business Ed. Hamilton  
Rogers Record 2; Girls' League 1,  
2, 3, 4; Big Sister 4; Homeroom  
V. Pres. 4; D.E.C.A. 4; A.S.B. 1, 2,  
3, 4; Legi Et Scripti 1.



**ERDMAN, HOMER M.** "Homer"  
Art Hamilton  
Hall Patrol 4; Boys' Fed. 1, 2, 3,  
4; A.S.B. 1, 2, 3, 4.

**EVEY, EVONNE** "Vonnie"  
Business Ed. Lewis & Clark  
Big Sister 4; F.B.L.A. 4; Homeroom  
officer 2; Girls' League 2, 3, 4;  
A.S.B. 2, 3, 4; Office worker.



**FARMER, WESLEY LLOYD**  
"Wes"  
Foreign Language Longfellow  
Track 1; Football 2; Boys' Fed.  
comm. 4; A.S.B. 1, 2, 3, 4; Boys'  
Fed. 1, 2, 3, 4.

**FAWVER, BILLIE EILEEN**  
"Billie"  
Math Shaw  
F.T.A. 2, 3, 4; F.H.A. 2; Student  
Council Rep. 2; P.T.S.A. Rep. 2;  
Bookroom 3; Y.F.C. 2, 3, 4; Girls'  
League 2, 3, 4; A.S.B. 2, 3, 4.





**"Gordon"**  
History Our Lady of Lourdes  
J.A. 3, 4; Boys' Fed. 2, 3, 4; Avia-  
tion Club 3; Senate Club 3, Rifle  
Club 4; Red Cross Rep. 1, 2, 3, 4.

**FLORIN, LINDA LEE** "Linda"  
Distributive Ed. Shaw  
Pep Club 3; P.T.S.A. Rep. 3; Red  
Cross Rep. 3, 4; Sportettes 3;  
D.E.C.A. 4; Girls' League 2, 3, 4;  
Big R comm. 3; Big Sister 4; Pins  
and Points 4; Bookroom 2, 3, 4.

**FOLAND, DENNIS GEORGE** "Denny"  
History Longfellow  
Football 1, 2, 3, 4; Basketball 1, 2,  
3, 4; R Club 3, 4; Band 1, 2; Frosh  
Initiation Con; Homeroom officer;  
Hall Patrol; Student Council Rep.;  
Conductor 3, 4.

**FISHER, NANCY F.** Nancy  
Business Ed. Whitman  
Song and Cheerleader 4; Pirettes  
2, 3, 4; Girls' League Treas. 4; Pep  
Club 1; F.B.L.A. 2; Homeroom of-  
fices 2, 3, 4; Spring Day Chrmn. 3;  
Girls' League comm. 2, 3, 4;  
A.S.B. comm. 3, 4; R Week date 2;  
Frosh Initiation Con 4; Honor Roll  
1, 2, 3, 4; Homecoming comm. 3;  
Spring Sports comm. 3; Girls'  
League Rep.; Usherettes 1, 2, 3;  
Dues Drive 2; Big Sister 3, 4.

**FOCKLER, JUDITH ANNE** "Judy"  
Science Shaw  
Pep Club 2; Pirettes 4; Home-  
room officer 2, 4; Honor Roll 2,  
4; Business office 3, 4; Spanish  
Club 3; Big Sister 3, 4; Girls'  
League 2, 3, 4; Eligibility comm. 4;  
Livewires comm. 4; F.B.L.A. 4.

**FOX, RICHARD ELVIN** "Elvin"  
History Lidgerwood  
Boys' Fed. 1, 2, 3, 4; Student  
Council 4; Homeroom Sec. 1.



**FREELAND, TERRY MICHEAL** "Terry"  
Science Arlington  
Boys' Fed. 2, 3, 4; Student Council  
Rep. 3.

**FRINK, LOISLYNNE** "Lois"  
History Shaw  
Y.F.C. 2, 3, 4; Girls' League 2, 3,  
4; A.S.B. 2, 3, 4; F.N.A. 4.

**FULLMER, JANICE LYNN** "Janice"  
Science Shaw  
Big Sister 3, 4; Pep Club 2; Pi-  
rettes 4; F.B.L.A. 4; Girls' League  
Rep 4; Red Cross Rep. 4; Greet-  
ings comm. 4; Livewires comm. 4;  
Girls' League 2, 3, 4; A.S.B. 2, 3,  
4.

**FRENCH, GRACE DARLENE** "Frenchie"  
Science Longfellow  
Pirettes 2, 3; Pep Club 1; Latin  
Club 3, 4; Vocations comm. 3;  
Homeroom officer 4; Officer work-  
er 4; Girls' League 1, 2, 3, 4;  
A.S.B. 1, 2, 3, 4; Serving Girls 3;  
Big Sister 3; Rogers and Inland  
Empire Science Fair Winner 3; Li-  
brary worker 3; Study Hall Check-  
er 2, 3.

**FROMAN, RONALD LEE** "Ron"  
Art Whitman  
Bookroom and Lockerroom 1, 2, 3;  
Boys' Fed. 1, 2, 3, 4; Student  
Council 1; A.S.B. 1, 2, 3, 4; Foot-  
ball 1.

**GALIPEAU, DONNA KAY** "Donna"  
Business Ed. Holy Names Academy  
Girls' League 2, 3, 4; A.S.B. 2, 3,  
4; Homeroom Sec.; Cafe worker 4.



**GALLOWAY, SANDRA LEE** "Sandy"  
English Lidgerwood  
Business Ed.  
Student Council 1; Red Cross 2; Pep Club 2; F.H.A. 1, 2, 3, Treas. 3; Thespians 3, 4; Business office 4; Choir 3, 4; Girls' Glee 2; Girls' League Rep. 3; Big Sister 3, 4; Courtesy comm. 4; Puss in Boots 3; Girls' League Con Chmn. 4; Dad and Daughter Dessert Hostess; Come Rain or Shine.

**GEER, NAOMI RUTH** "Naomi"  
English Shaw  
Golf 2, 3; Big Sister 3; Girls' League 2, 3, 4; Study Hall Checker 2, 3; A.S.B. 2, 3, 4.

**GARNETT, PATRICIA** "Pat"  
English Shaw  
National Honor Society 3, 4; Senior Class Treas.; Choir 2, 3, 4, Sec. 3; Triple Trio 2, 3, 4; Girls' League Rep. 3; French Club 3, 4; Pep Club 2; Girls Glee Club 2; Main office 4; Big Sister 3, 4; A.S.B. comm. 4.

**GENOWAY, PATRICIA RUTH** "Pat"  
Business Ed. Shaw  
F.B.L.A. 3, 4, V. Pres. 4; Girls' League 2, 3, 4; Morning Girls' comm. 3; Main office worker 4; Study Hall Checker 4; Red Cross Rep. 3.



**GETOOR, MYRLANNE KAREN** "Chic"  
Glover  
Student Council Rep. 2; Homeroom V. Pres. 4; Atten. office worker 3; Set. designer, Anastasia 2; Rogers Review 2; Sports Queen ticket seller 2; Girls' League 1, 2, 3, 4; Wrestling Hostess 2; Greeter 4; Big Sister 3, 4; Pep Club 1, 2, 3; A.S.B. 1, 2, 3, 4; Palette and Brush Club 2, 3; Vocations 3; Serving Girls. comm. 1.

**GIBBS, GARY** "Gar"  
History Hamilton  
Boys' Fed. 1, 2, 3, 4; Cross Country; Choir 1, 2; Quartet; Boys' Glee; Student Council.



**GIBSON, DONALD H.** "Don"  
Math Shaw  
A.S.B. Pres. 4; Boys' Fed. V. Pres. 3; Football 3, 4; Baseball 2, 4; Basketball 2; R Club 3, 4; Homeroom Pres. 2, 3; Dad's Night Chrmn.; Conductor 3; Hall Patrol 3; Ticket seller 3; A.S.B. 2, 3, 4.

**GIBSON, JOANNE JOY** "Jo"  
Science Longfellow  
Big Sister 4; Dad and Daughter Dessert 4; Dues Drive 2; Main office 4; Gym Checker 3; Style Trends 4; Usherettes 2; Honor Roll 1, 3, 4; Elections 4; Big and Little Sister Party 4; Pep Club 1; Pi-ettes 4; T.C. staff 4; Serving Girls 2; Sr. Mother's Tea 3; Tag Day Sales 1; Girls' League 1, 2, 3, 4; A.S.B. 1, 2, 3, 4.



**GLEESON, JAMES LYLE** "Jim"  
English Wihlman  
Boys' Fed. 1, 2, 3, 4; A.S.B. 1, 2, 3, 4; Homeroom V. Pres.; Hall Patrol; Football; Baseball 1, 2, 4.

**GLUBRECHT, JUDITH** "Judy"  
English St. Xavier's  
Girls' Track 1; Girls' Baseball 1; Girls' League 1, 2, 3, 4; A.S.B. 1, 2, 3, 4; F.H.A. 1; Girls' Glee 2, 3, 4; Girls' Basketball.



**GOEHRING, SUSAN** "Sue"  
Home Economics North Central  
F.H.A.; Red Cross; Girls' League; P.T.S.A. Rep.

**GORMAN, LYNDA KAY** "Lynda"  
Home Economics Shaw  
National Honor Society 3, 4; Senior Class Sec.; F.H.A. 2, 3, 4, Pres. 4; Study Hall Checker 3; Varsity Tennis 3, 4; Homeroom offices 3, 4, Pres. 4; Pep Club 2; Greetings comm. Chrmn. 4; Girls' State Finalist 3; Big Sister 3, 4; Honor Roll 1, 2, 3, 4; A.S.B. Elections comm. 4; Senior Math Club 4.





**GOSK, PATRICIA CHRISTINE**  
"Pat"

History Holy Names Academy  
Girls' League 3, 4; Lost and Found  
comm. 4; Standards comm. Chrmn.  
4; A.S.B. 3, 4; Mother is a Fresh-  
man 3; Come Rain or Shine 4;  
Big Sister 4; Girls' League Rep. 3;  
Femme Sportettes 4.

**GRAY, CATHERINE ANN**  
"Cathy"

Home Economics Cheney  
Shop office worker 4; Girls'  
League; A.S.B.; F.N.A. 4.

**DISHNO, DIANN (GREGERSON)**  
"Diann"

Business Ed. Shaw  
Pirettes 2, 3; Varsity Tennis 3, 4;  
Girls' League comm. 2, 3, 4; Con  
Chrmn. 4; A.S.B. comm. 2, 3, 4;  
P.T.S.A. Chrmn. 4; Mother Is A  
Freshman 3; Speech Contest Win-  
ner 3; F.B.L.A. 2, 3; Senior Math  
3.

**GOSSWILLER, TONYA ALEXIS**  
"Toni"

History Shaw  
Pirettes 2, 3; Styles Trend model  
2, 3; Homeroom officer 2, 3;  
Homeroom Big Sister 3; Study  
Hall Checker 4; Gym Checker 3;  
Dad and Daughter Dessert comm.  
4; A.S.B. 2, 3, 4; Girls League 2,  
3, 4.

**GREENE, PATRICK J.** "Pat"

English Sycamore Hi  
Boys' Fed. 3, 4; Homeroom Sgt.-  
at-Arms 3; A.S.B. 3, 4.

**HALSTED, DAVID PATRICK**  
"Dave"

Science Shaw  
Homeroom offices 2, 3, 4; Stu-  
dent Council 3; Boys' Fed. comm.  
3, 4; T.C. staff 3, 4; Sports Editor  
4; Rogers Record 2, 3, Business  
Mgr. 3; Spanish Club officer 3, 4;  
Quill and Scroll officer 4; P.T.S.A.  
2, 3, 4; Fire Squad 4.



**HANEVOLD, HELEN MARIE**  
"Helen"

Business Ed. Davis, Yakima  
Girls' League 1, 2, 3, 4; A.S.B. 1,  
2, 3, 4.

**HANKEL, BARBARA ANN**  
"Barb"

History Whitman  
Tennis 1, 2, 3, 4; Thespians 2, 3,  
4, V. Pres. 3; Science Fair Winner  
2; Anastasia props 2; Solid Gold  
Cadillac publicity 2; Mother Is A  
Freshman usherette 3; One Act  
Plays 1, 2, usherette 3; Homeroom  
officer 1, 2; Honor Roll 1, 2, 3, 4;  
Trophy Case comm. 1, 3; Serving  
Girls 1; Con comm. 4; Cafe.  
comm. 1; A.S.B. 1, 2, 3, 4.



**HANNA, GARY GORDON**  
"Gary"

Science Longfellow  
Football 1, 2; Wrestling 1; Track  
1, 2; Homeroom offices 1, 2, 3,  
4; Red Cross Rep.; Boys' Fed. 1,  
2, 3, 4; A.S.B. 1, 2, 3, 4; Ticket  
Seller 4; Hall Patrol 4.

**HANNA, LINDA KATHERINE**  
"Linda"

Business Ed. Shaw  
Study Hall Checker 2; Homeroom  
officer 3; F.B.L.A. 2, 3; Y.F.C. 2,  
3, 4, Officer 3; Big Sister 3; Spell-  
ing Contest 3; Office worker 4;  
Girls' League 2, 3, 4; A.S.B. 2, 3,  
4.



**HANSEN, DAVID R.** "Dave"

Math Longfellow  
Football 1, 2, 3, 4; Basketball 1,  
2, 3, 4; National Honor Society 3,  
4; Rogers Hi-Y; Senior Math Club;  
R Club 3, 4; Homeroom officer 1,  
2, 3, 4; Student Council Rep. 1, 2,  
3, 4; Boys' Fed. Vocations Chrmn.  
4; Press Box Chrmn. 4; Speech  
Contest 2. Boys' Fed. Pres. 4.

**HANSON, DENNIS EDWARD**  
"Dennis"

History Longfellow  
Football 1; Track 1, 2; Prom  
Comm. 3; A.S.B. 1, 2, 3, 4; Boys'  
Fed. 1, 2, 3, 4; Homeroom officer  
1, 2, 3, 4; Fire Patrol 2, 3; Hall  
Patrol 2; Ticket Seller 4; Intra-  
murals 1, 2, 3, 4; Rogers Record 2.  
Boys' Fed. Sec. 4.



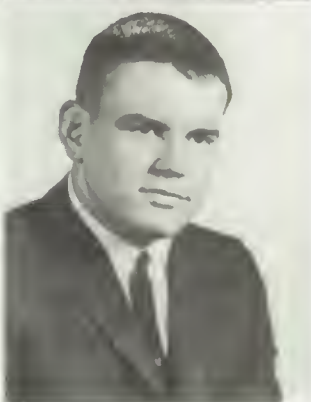
**HANSON, EVERETT LYLE "Ev"**  
Science Whitman  
Boys' Fed. 1, 2, 3, 4; A.S.B. 1, 2, 3, 4.

**HANSON, JOANN RAULINE "JoAnn"**  
Business Ed. Hamilton  
Pirettes 2, 3, 4; Girls' League comm. 2, 3, 4; Eligibility Chrmn. 4; Lost and Found; Trophy Case; Cafe. comm. Study Hall Checker 2, 3, 4; Pins and Points 4; F.B.L.A. 2, 3, 4; Treas. 4; Homeroom offices 1, 2, 3, 4; Honor Roll 1, 2, 3, 4; Student Council Rep. 2, 4; Girls' League Rep. 1; Big Sister 3, 4; Girls' League Sec. 4.



**HARCEY, EILEEN CLAIR "Eileen"**  
Home Economics Hamilton  
Song and Cheerleader 3; National Cheerleader Assn. 3; Pirettes 2, 3, Exec. Board 3; Homecoming Princess 3; Frosh Con 3, Chrmn. 4; Homeroom Pres. 4; Jr. Prom comm. 3; Atten. Office 3; Elections 3, 4; Usherettes 3, 4; A.S.B. comm. 2, 3, 4; Big Sister 3; Girls' League comm. 1, 2, 3, 4; Latin Club 1, 2; Study Hall Checker 4.

**HARMSEN, DENNIS R. "Dennis"**  
Science Shaw  
Boys' Fed. 2, 3, 4; A.S.B. 2, 3, 4.



**HARPER, DIANE RAE "Diane"**  
Business Ed. Hamilton  
Pep Club 1, 2; F.H.A. 1; Lost and Found 2; Frosh dinner comm. 2; Homeroom offices 1, 2, 3; Girls' Glee 2, 3; Big Sister 4; F.B.L.A. 4; A.S.B. 1, 2, 3, 4; Girls' League 1, 2, 3, 4.

**HASS, RAYMOND PAUL "Ray"**  
History Shaw  
Football 2, 3, 4; Frosh Con Chrmn 4; Student Council 2, 3; Boys' Fed. 2, 3, 4; P.T.S.A. Rep. 4; Dance comm. 3, 4; Hall Patrol 2; Stair Patrol 3, 4; Big R Week date 2; Homeroom Sgt.-at-Arms 3; Frosh and Sophomore Visitation Chrmn. 3.

**HATTON, RONALD LEE "Ron"**  
English Arlington  
Boys' Fed. 2, 3, 4; Hall Patrol 2; Aviation Club 3.

**HAYDEN, VICKY "Vicky"**  
Science Shaw  
Homeroom V. Pres. Sec. 2, 3; Student Council 3; Pirettes 4; French Club 3, 4; F.H.A. 4; Speech Contest 2; Sports Queen Ticket Seller 2, 3; Charity Drives; Girls' League comm. 2; A.S.B. 2, 3, 4; Girls' League 2, 3, 4; Pep Club 2; Science Fair Official.



**HAYES, JACK RANDALL "Jack"**  
English St. John Hi  
Basketball 3, 4; Baseball 3, 4; Homeroom officer 4; Boys' Fed. 3, 4; A.S.B. 3, 4.

**HAYS, JUDITH MARILYN "Judy"**  
Distributive Ed. Whitman  
D.E.C.A. Pres. 4; Homeroom Pres. 4; Student Council Rep. 3; Jr. Art Club V. Pres. 1; Spanish Club 3; Bulletin Board comm. 3; Calendar 4; Pins and Records comm. 4; Girls' League worker 4; Pep Club 1; Red Cross Rep. 3; Business Office worker 4; P.T.S.A. Rep. 2; Big Sister 3, 4; A.S.B. 1, 2, 3, 4.



**HAYS, MARCY JEAN "Marcy"**  
Foreign Languages Longfellow  
Honor Roll 1, 3; Pirettes 2, 3; Usherettes 3, Chrmn. 4; Sweater Day 4; Dues Drive 3; Sr. Mothers' Tea 3; Cafe. comm. 2; Courtesy 2; Elections 3, 4; Charity Drives 2; Homecoming 4; Big Sister 3; Homeroom Big Sister 4; Vocation Introducer; Tag Day Sales 1, 2, 3, 4; Main Office 4; Powder Puff Football; Style Trends model 1.

**HEGG, ANN LAURINE "Ann"**  
History Shaw  
Rogers Record 2, 3, 4; Quill and Scroll 3, 4; F.B.L.A. 3; Y.F.C. 2, 3, 4; Speech Contest Winner 2; Big Sister 3, 4; A.S.B. 2, 3, 4; Awards Hall Chrmn. 4; Girls' League 2, 3, 4; Sr. Mothers' Tea 3; Postage Stamps 4; T.C. Salesman 3, 4; Office Worker 4.





HEISLER, CHARLENE KAT "Charlie"  
 Science Shaw  
 F.N.A. 2, 3, 4, Sec. 3, Pres. 4;  
 Band 2, 3; Orchestra 2, 3; A.S.B.  
 Charters Chrmn. 4; Elections  
 comm. 4; Big Sister 3, 4; Lost and  
 Found comm. 3; Standards comm.  
 4; Atten. Office 4.

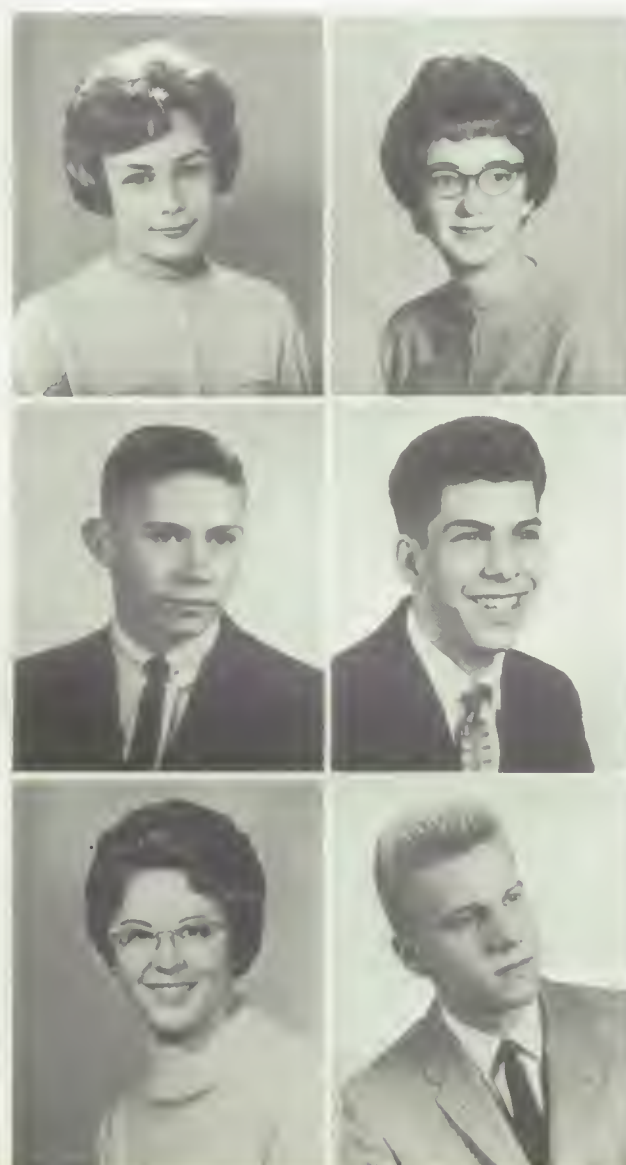
HIGGINS, PATRICK IRA "Pat"  
 Math Gonzaga Prep  
 A.S.B.; Boys' Fed.

HINES, ARLENE FAYE "Arlene"  
 Art Shaw  
 Dad and Daughter Dessert Chrmn.  
 4; Style Trends model 2; Dance  
 comm. 4; Con comm. 4; Frosh Initia-  
 tion comm. 4; Homecoming  
 comm. 4; Vocations Introducer 3;  
 F.B.L.A. 2; Homeroom Big Sister  
 4; Homecoming Princess 4; Powder  
 Puff Football 3; Office worker;  
 Homeroom Offices; Honor Roll;  
 Big Sister.

HELLAND, BARBARA JOYCE "Bobbi"  
 Business Ed. Whitman  
 Song and Cheerleader 4; Pirettes  
 2, 3, 4; Pep Club 1; Style Trends  
 Chrmn. 4; Evaluations Chrmn. 3;  
 Trophy Case Chrmn. 3; Home-  
 coming comm. 3, 4; Spirit comm.  
 4; Frosh Initiation Con comm. 4;  
 Elections comm. 2, 3; Big Sister 3,  
 4; Dad and Daughter Dessert  
 comm. 2, 4; Livewires comm. 2.

HILL, VICTORIA LYNN "Vickie"  
 Business Ed. Marycliff  
 A.S.B. 3, 4; Girls' League 3, 4;  
 F.B.L.A. 3, 4; Big Sister 4; Annual  
 Sales 3; Homeroom Scholarship  
 Chrmn. 3; Study Hall Checker 3.

HINTON, LARRY HAROLD "Larry"  
 Business Ed. Columbia Falls, Mont.  
 All N.W. Chorus 2; F.B.L.A. 3, 4;  
 Y.F.C. 2, 3, 4; Homeroom Sec. 2;  
 Library Rep. 3.



HODGE, DONNA JEAN "Jean"  
 Business Ed. Hamilton  
 Pirettes 2, 3; A.S.B. Elections 3, 4;  
 Homecoming 4; Usherettes 3, 4;  
 Frosh Initiation Con 4; Tag Day  
 Sales 1, 2; Trophy Case 3; Girl of  
 the Month comm. 4; Pep Club 1;  
 Powder Puff Football team 3;  
 Homeroom officer 1, 2, 3; Big Sis-  
 ter 3; Study Hall Checker 2, 4; Vo-  
 cations comm.; A.S.B. 1, 2, 3, 4;  
 Girls' League 1, 2, 3, 4.

HOLBERT, FRED EDWARD "Fred"  
 History Shaw  
 Homeroom Sgt.-at-Arms 4; Boys'  
 Fed. Rep. 3; French Club 4; Avia-  
 tion Club 2.

HOLMES, DORIS IRENE "Dory"  
 Business Ed. Shaw  
 Pirettes 2, 3, 4, Treas. 4; F.B.L.A.  
 2, 3, 4, Reporter, Sec.; Elections  
 comm. 4; Big Sister 3, 4; Office  
 worker 3; Evaluations comm. 4;  
 Greetings comm. 4; Eligibility  
 comm. 3; Homeroom offices 2, 3,  
 4; Girls' League Rep. 4; Serving  
 Girls 3.

HOFFMAN, LINDA LOUISE "Linda"  
 Math Hamilton  
 National Honor Society 3, 4; Var-  
 sity Debate 2, 3; Pirettes 2, 3; Sr.  
 Math Club 3, 4; Spanish Club 1,  
 2, 3, 4; Pep Club; F.T.A. 2; Sr.  
 Mothers' Tea 2, 3; Big Sister 3, 4;  
 Golf 4; Girls' League comm; Hon-  
 or Roll 1, 2, 3, 4; Dad and Daugh-  
 ter Dessert 2; Cafe. comm. 1, 2;  
 Morning Girls 3; Tutoring 3.

HOLIEN, LARRY LEE "Larry"  
 History Shaw  
 A.S.B. 2, 3, 4; Boys' Fed. 2, 3, 4.

HOLMES, GARY JAY "Gary"  
 Science Arlington  
 Boys' Fed. 2, 3, 4; Boys' Fed. Rep.  
 3; Hall Patrol 4; D.E.C.A. Treas. 4.



**HOLST, DONALD LEE** "Don"  
Science Shaw  
Boys' Fed. 2, 3, 4; Hall Patrol 3;  
A.S.B. 2, 3, 4.

**HOETER, KENNETH** Ken  
Math Arlington  
Homeroom Officer 2, 3; A.S.B. 2,  
3; Football 2; Stage Crew 3.



**HUETER, LAWRENCE ALAN**  
"Larry"  
Math Arlington  
Thespians 3, 4; Stage Crew 3;  
Mother Is A Freshman; Anastasia;  
Puss in Boots; Homeroom Officer  
2, 3.

**HUGHES, PAULETTE MARIE**  
"Polly"  
Business Ed. Longfellow  
Homeroom Library Rep. 1, 2, 3;  
Charity Drives; F.B.L.A. 2; Shop  
Office worker 4; Study Hall  
Checker 3, 4; Homeroom V. Pres.  
4.



**HUNDLEY, SHARON ANN**  
"Sharon"  
Math Longfellow  
Sr. Math 3, 4; French Club 3, 4;  
Palette and Brush 1, 2, 3; Varsity  
Tennis 1, 2, 3, 4; Honor Roll 1, 2,  
3, 4; Big Sister 4; Pep Club 1;  
Study Hall Checker 4; A.S.B. 1, 2,  
3, 4; Charity Drives 1, 2, 3, 4; Bul-  
letin Board 1, 2, Chrmn. 3; Sr.  
Mothers' Tea 1, 2, 3; Standards 2;  
Christmas Projects 3; Livewires 3.

**IMHOLT, MICHAEL** "Mike"  
History Gonzaga Prep  
Boys' Fed. 4; Red Cross Rep. 4.

**IVY, PEGGY ANN** "Peggy"  
Business Ed. Shaw  
F.B.L.A. 2, 3, Treas.; T.C. Seller 3;  
Dad and Daughter Dessert comm.  
3; Study Hall Checker 3; Big Sis-  
ter 3, 4; Homeroom Offices 2, 3;  
Sr. Math Club 3; Elections 4; Eli-  
gibility 4.

**JACK, MARVIN ROY** "Marv"  
Science Shaw  
Quill and Scroll; T.C. 2, 3, 4, Bus-  
iness Mgr. 3, 4; Photo Staff 4;  
Boys' Fed.



**JACOBS, LARRY** "Larry"  
Science Hamilton  
Science Fair Winner 2, 3, 4; Band  
1, 2, 3, 4; Best Actor of One Act  
Plays '59; Speech Contest Winner;  
Homeroom Officer 1, 2, 3, 4; Solo  
and Ensemble Meet 3, 4; Track 1,  
2; Cross Country 1, 2, 3.

**JACOBSON, JAMES DOUGLAS**  
"Jake"  
Science Regal  
Boys' Fed. 2, 3, 4; A.S.B. 2, 3,  
4; Golf 2, 3, 4; R Club 3, 4; Boys'  
Fed. Rep.; Sr. Math Club 3;  
Homeroom Offices.



**JAMERSON, JAMES HAROLD**  
"Jim"  
Drama Lidgerwood  
Thespians 1, 2, 3, 4, Pres. 3, Hon-  
or Thespian 3, 4; Red Barn Players  
1, 2, 3, 4; Drama Festival Award  
1; Homeroom V. Pres. 3; Rumpel-  
stiltskin 1; Puss and Boots 2, 3,  
Best Actor; Wizard of Oz 3; Snow  
White 2; Plain Princess 3; Prod.  
Staff, Dear Phoebe, Mother Is A  
Freshman 3; Talent Show 1.

**JANNI, PAMELA MARIE** "Pam"  
History Arlington  
Student Council Rep. 4; Big Sis-  
ter 4; Study Hall Checker 4; Color  
Day comm. 4; Elections comm. 4.





JESSEN, RODNEY C. "Rod"  
History Whitman  
Student Council Rep. 1, 3; Hall  
Patrol 2; A.S.B. 1, 2, 3, 4.

JOHNSON, KAREN LYNN  
"Karen"  
History Whitman  
T.C. Staff 4; Triple Trio Accomp.  
4; Pirettes 3; Atten. Office 4; Sr.  
Mothers' Tea co-Chrmn. 3; Jr.  
Prom Tickets Chrmn. 3; P.T.S.A.  
Rep. 3; Elections 3, 4, co-Chrmn.  
4, Chrmn. 4; Publicity Chrmn. 4;  
Serving Girls Chrmn. 4; Dance  
comm. 4; Usherettes 3, 4; Study  
Hall Checker 2; Honor Roll 1, 2,  
3, 4; Girls' League Pres. 4.

JORDAN, SHIRLEY NAOMI  
"Shirl"  
History Shaw  
Study Hall Checker 4; Y.F.C. 2,  
3, 4; A.S.B. 2, 3, 4; Girls' League  
2, 3, 4.

JOHNSON, JACQUELINE "Jackie"  
JO-ANN  
History Shaw  
Cheerleader 4; A.S.B. Treas. 4;  
Dad and Daughter Dessert Ticket  
Chrmn. 4; Pirettes 2, 3; Frosh Ini-  
tiation Con co-chrmn. 3; Home-  
room Pres. 3; Girls' League Rep.  
2; Trophy Case comm. 3; Sr.  
Mothers' Tea Refreshment comm.  
3; Jr. Prom Pic. Chrmn. 3; Elec-  
tions comm. 3; Homecoming  
comm. 3; Big R Week Date 2.

JOHNSON, STEPHEN M.  
"Steve"  
History Longfellow  
Boys' Fed. 1, 2, 3, 4; A.S.B. 1, 2,  
3, 4; Cross Country 1, 2, 3; Track  
1, 2.

JOYCE, RITA E. "Rita"  
Foreign Languages Whitman  
Honor Roll 1, 2, 3, 4; Pirettes 4;  
Big Sister 3, 4; Guidance Office  
worker 4; Student Council 2;  
F.B.L.A. 4; Spanish Club 1, Officer  
2; French Club 3; Pep Club 1,  
princess 2; Study Hall Checker 2;  
Homeroom Pres. 1; Sr. Math 4;  
Girl of the Month comm. 4; Serv-  
ing Girls comm. 2; Livewires  
comm. 2; After School Sports 1.



JURICEK, BILL JOHN "Bill"  
History Shaw  
Boys' Fed. Rep. 3; Homeroom Of-  
ficer 2, 3, 4.

KECK, GARY LYNN "Gary"  
Math Shaw  
Sr. Math Club 3, 4; Aviation Club  
2, 3, 4; Boys' Fed. Rep. 4; A.S.B.  
2, 3, 4.



Mr. Sleizer, senior class advisor,  
adjusts the cap of Hazel Swim as  
Dave Halsted and Wes Farmer  
look on.



**KELLEY, LINDA RAE** "Mike"  
Business Ed. Marycliff  
A.S.B. 3, 4; Girls' League 3, 4;  
F.B.L.A. 4.

**KEMANO, DIANA** "Diane"  
Drama Shaw  
Girls' League 2, 3, 4; F.H.A. 4;  
Study Hall Checker 4; Work Shop,  
Plays 2, 3.



**KENNEY, DALE B.** "Dale"  
Math Deer Park  
Student Council 2; Sr. Math 3, 4;  
Tennis 1, 2, 3, 4; Boys' Fed comm.  
4; A.S.B. 1, 2, 3, 4; Boys' Fed. 1,  
2, 3, 4; Intramurals 3, 4.

**KIDDER, MARY ANN** "Mary Ann"  
Business Ed. Regal  
F.B.L.A. 2; Y.F.C. 2, 3, 4; Big  
Sister 3, 4; Study Hall Checker 3;  
Elections comm.; Girls' League  
comm.



**KILGORE, NANCY ELLEN** "Nan"  
Business Ed. Deer Park Hi  
F.T.A. 4; Golf 4.

**KILE, TIMOTHY J.** "Tim"  
Science Logan  
A.S.B. 1, 2, 3, 4; Boys' Fed. 1, 2,  
3, 4; Intramural Sports 3, 4.

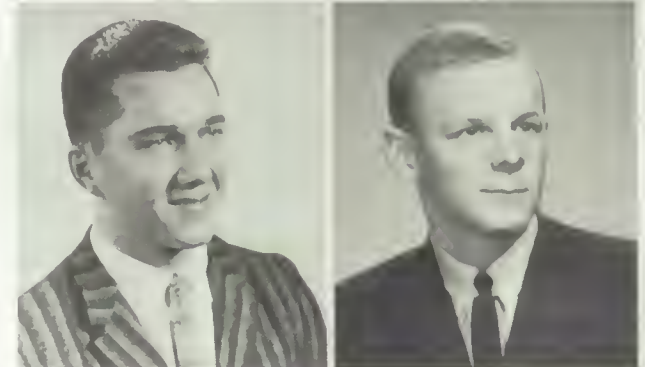
**KING, JAMES MANVILLE** "Jim"  
Math Longfellow  
Cross Country 2; Sr. Math 3, 4;  
Rifle Club 2; Jr. Math 2; Thes-  
pians 1, 2, 3, 4; Red Barn Players  
1, 2, 3, 4; Children's Theatre 1;  
One Act Plays 1; Intramurals 1,  
2, 3, 4.

**KING, BOB** "Bob"  
English  
Boys' Fed. 1, 2, 3, 4; A.S.B. 1, 2,  
3, 4; Baseball 2.



**KIRK, RONALD LESLE** "Ron"  
History Bemiss  
A.S.B. 2, 3, 4; Boys' Fed. 2, 3, 4;  
Aviation Club 3.

**KLEIN, JEFFREY C.** "Jeff"  
History Glover  
Homeroom Pres. 2, 3; T. C. Sales  
3; Boys' Fed. 1, 2, 3, 4; Band 1;  
A.S.B. 1, 2, 3, 4; Ski Club 3.



**KNAPP, MARY KAY** "Mary Kay"  
Business Ed. Libby  
Honor Roll 1, 2, 3, 4; Usherettes  
4; F.B.L.A. 3, 4; Big Sister 3, 4;  
Homeroom Officer 1, 2; Latin  
Club 1; Cotton Cutie Princess 2,  
3; Tennis 4; Pep Club 1, 2; Li-  
brary Rep. 2, 3; Sr. Math 4; After  
School Sports 1, 2; Charity Drives  
1.

**KNOWLES, DOUGLAS ALLEN** "Doug"  
Math Shaw  
Rifle Club 2, 3, 4; Senate Club 3,  
4; Sr. Math Club 2, 3, 4; Home-  
roof Officer 3, 4; A.S.B. 2, 3, 4;  
Boys' Fed. 2, 3, 4.





**KOESTER, FRED FRANKLIN** "Fred"  
Industrial Arts Gonzaga  
A.S.B. Rep. 1, 2, 3; Hall Patrol 4.

**KRAMER, CLYDE H.** "Clyde"  
Art Lidgerwood  
Track 1, 2; Homeroom Officer;  
Palette and Brush Club 2; A.S.B.  
1, 2, 3, 4; Boys' Fed. 1, 2, 3, 4.



**KRUGER, DIANA LEE** "Diane"  
Music Spokane Lutheran  
Choir 1, 2, 3, 4; Triple Trio 2, 3,  
4; Boys' Glee Accomp. 3; Girls'  
Choir Accomp. 4; Elections comm.  
4; All Northwest Chorus 2, 4; All  
State Chorus 3; Speech Contest  
Winner 2; Gym Checker 2; Con-  
stitution comm. 4; Greetings  
comm. 3; Spanish Club 2, 3, 4, Of-  
ficer 2; Homeroom Officer 2, 3;  
Red Cross Rep. 3; Girls' League  
1, 2, 3, 4; A.S.B. 1, 2, 3, 4.

**LAKE, MILDRED ELAINE** "Milaine"  
Business Ed. Shaw  
T.C. Staff and Seller 3, 4; Elec-  
tions co-Chrmn. 3, Chrmn. 4; Big  
Sister 4; Courtesy comm. 3; Dad  
and Daughter Dessert 3; Bulletin  
Board comm. 3; Eligibility comm.  
3; Charity Drives 4; Serving Girls  
4; Pep Club 2; Vocations Intro-  
ducer 3; Quill and Scroll 4; Home-  
room Officer 3, 4.



**LAMBERT, LAWRENCE W.** "Larry"  
Math Glover  
Band 1, 2, 3, 4; Orchestra 2, 3, 4;  
Dance Band 2, 3, 4; Boys' Fed 3;  
National Honor Society 3, 4; Sr.  
Math 3, 4; Homeroom Officer 1,  
3; Honors Band 1, 2, 3, 4; P.T.S.A.  
3; E.W. Sight Reading 2, 3, 4;  
Inland Empire Solo Comp. 1, 2, 3,  
4.

**LARKIN, KATHERINE ANN** "Ann"  
Business Ed. Shaw  
Homeroom Officer 3, 4, V. Pres.  
3, Pres. 4; Palette and Brush Club  
Officer 2, Sec.; Pep Club 2;  
F.B.L.A. 2; Girls' League 2, 3, 4;  
Big Sister 4; A.S.B. 2, 3, 4.



**LATENSER, BEATRICE** "Bea"  
English Shaw  
Elections comm. 4; Pep Club 2;  
Bookroom worker 3; Girls' League  
2, 3, 4.

**LAWRENCE, VERN BARTLETT** "Bart"  
History West Valley  
Hall Patrol 3, 4; Rifle Club 1; Red  
Lick comm. 4; Boys' Fed. 1, 2, 3,  
4; Boys' Glee 4; A.S.B. 1, 2, 3, 4.



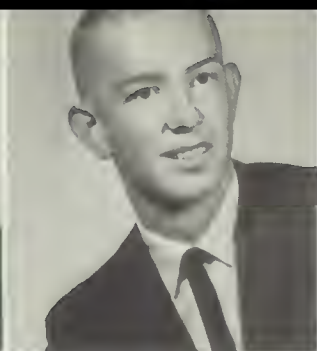
**LEAF, JUDITH** "Judi"  
Business Ed. Shaw  
Girls' League 2, 3, 4; French Club  
4; Jr. Art Club 3, 4; F.B.L.A. 4;  
Honor Roll 2, 3, 4; Elections comm.  
4; Homeroom Officer 4.

**LEAF, VIRGINIA GAYLE** "Ginny"  
Business Ed. Longfellow  
Choir 2, 3, 4; Triple Trio 4; Girls'  
Glee 1; F.B.L.A. 2, 3, 4; F.H.A.  
3, 4, Sgt.-at-Arms 3; Hostess for  
Vocations Day 1; Pep Club 1, 2;  
Big Sister 4; Cafe. comm. 2, 3;  
Honor Roll comm. 2; Honor Roll  
3, 4; Serving Girls comm. 3; Live-  
wires comm. 4; Red Cross Rep. 2,  
3; Color Day comm. 4; Library  
Rep. 2, 3; Atten. Office 4.



**LEE, DAVID** "David"  
History Shaw  
A.S.B. 2, 3, 4; Boys' Fed. 2, 3, 4.

**LeFORS, DAVID ROY** "Dave"  
History Shaw  
Rifle Club 2; Homeroom Sgt.-at-  
Arms 2; Boys' Fed. 2, 3, 4; Hall  
Patrol 4; D.E.C.A. 4.



**LINDEMANN, MARJORIE ANN** "Margie"

History Holy Names Academy  
Dance comm. 4; Homecoming comm. 4; Jr. Prom comm. 3; Dad and Daughter Dessert 3, 4; Ush-erettes 4; Girls' League Rep. 3; Big Sister 4; Trophy Case 3.

**LINDOW, JAMES ROY** "Jim"

Science Longfellow  
Basketball 1, 2, 3, 4; Student Council 3, 4; Boys' Fed. Rep.; Homeroom Officer 2, 3; Cafe. Pa-trol 4; Dance comm. 4; Frosh Ini-tiation Con 4; Conductor 3, 4; Baseball 2; Homecoming comm. 4.



**LINDQUIST, MARGARET L.** "Marg"

Business Ed. Lidgerwood  
Christmas Con 1; Elections comm. 4; Sr. Mothers' Tea 3; Incoming Frosh and Sophomore Con 3; Study Hall Checker 2; Gym Checker 1, 2, 3; Girls' League 1, 2, 3, 4.

**LITTLE, KENNETH** "Ken"

Math Whitman  
Boys' Fed. comm. 3, 4; Boys' Fed. 1, 2, 3, 4; A.S.B. 1, 2, 3, 4; Home-room Pres. 2, 3, 4; Spanish Club Officer 3, Pres. 4; Varsity Tennis 2, 3, 4; Jr. Math 1, 2; Frosh and B Squad Basketball; Plays 1, 2; Student Council 1, 2, 3; Honor Roll 1, 2.



**LOSIE, LYNN** "Lynn"

Foreign Languages  
Jefferson Hi, Portland  
A.S.B.; Boys' Fed.

**LOUIE, MARIE** "Marie"

Business Ed. Longfellow  
Honor Roll 3, 4; Pirettes 4; Choir 3, 4; Girls' Glee 1, 2, Sec. 2; Big and Little Sister comm. 3, 4; Dad and Daughter Dessert comm. 3; Girls' League Rep. 1, 4; F.B.L.A. 2, 3; T.C. Sales 3; Student Coun-cil Rep. 1; Elections comm. 4; Col-or Day comm. 4; Tag Day Sales 1, 2; Spanish Club 3; Scrapbook-Yearbook comm. 3; P.T.S.A. Rep. 2, 3; Red Cross Rep. 1, 2.

**LUDWIG, JUDITH MARIE** "Judy"

History Longfellow  
National Honor Society 3, 4; Girls' League Pres. 4; Song and Cheer-leader 4; Girls' State Rep. 3; Pi-rettas 2, 3, 4; Honor Roll 1, 2, 3, 4; Homeroom Offices 1, 2, 3, 4; Girls' League comm. 1, 2, 3; Sr. Mothers' Tea Chrmn. 3; Girls' League Chrmn. 2, 3; A.S.B. comm. 1, 2, 3, 4; A.S.B. Chrmn. 3; Pep Club 1.

**McAVOY, PATRICIA** "Pat"

Math Marycliff  
Golf Team 4; Sr. Math Club 3, 4; Spirit comm. 3; Honor Roll 3; Big Sister 4; Study Hall Checker 4; Library Rep. 3; A.S.B. 3, 4; Girls' League 3, 4.



**McCARTY, DARLENE G.** "Babne"

History North Central  
Girls' League 3, 4; J.A. 3; F.H.A. 4; Y.F.C. 3, 4.

**McCLURE, JUDY ANN** "Judy"

Business Ed. Longfellow  
National Honor Society 3, 4; Post-age Stam comm. Chrmn. 4; Elec-tions comm. 4; Student Kitchen comm. 2; Pirettes 2, 3; Pep Club 1; Honor Roll 1, 2; Pirettes Exec. Board 3; Girls' Glee 1, 2; F.B.L.A. 3; Business Office worker 3, 4; Cashier 4; Girls' League Rep. 1, 2; Big Sister 4.



**McDONALD, MARY KATHLEEN** "Mimi"

Art Holy Names Academy  
National Honor Society 3, 4; De-bate 3, 4; Speakers' Bureau 3, 4; Pirettes 4; Dance comm. 4; Con comm. 4; Student Council 3; French Club 4; Speech Contest 2; Homeroom Pres. 3; Palette and Brush Club 1, 2; Honor Roll 1, 2, 3, 4.

**McDANIEL, MICKEY** "Mick"

Science Whitman  
Photo Staff 3, 4; Rogers Record 3, 4; Library helper 1, 2; Tennis 1, 2, 3; Wrestling 1; A.S.B. 1, 2, 3, 4; Boys' Fed. 1, 2, 3, 4.





McIVER, MIKE "Mike"  
Math Shaw  
A.S.B. 1, 2, 3, 4; Boys' Fed. 1, 2, 3, 4; Homeroom Officer 3, 4.

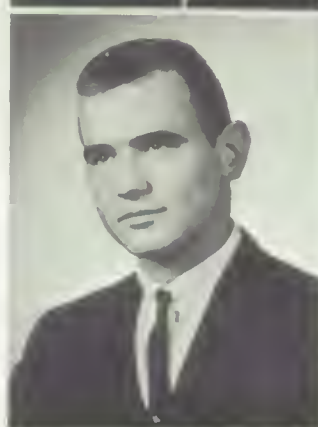
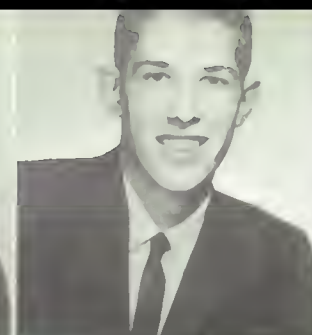
McKAY, RONALD W. "Ron"  
Industrial Arts Longfellow  
Red Cross 1, 2; A.S.B. 1, 2, 3, 4; Boys' Fed. 1, 2, 3, 4; Basketball 1, 2, 3.

McKINNEY, VERN GENE "Vern"  
Science Longfellow  
A.S.B. 1, 2, 3, 4; Boys' Fed. 1, 2, 3, 4.

McMACKIN, GARY LEE "Gary"  
History Longfellow  
Football 1; Track 1, 2, 3; Boys' Fed. 1, 2, 3, 4.

MACIEJEWSKI, TED "Ted"  
History St. Patrick's  
Student Council 1, 2; Boys' Fed. 1, 2, 3, 4.

MANTKUS, JOANNE "Joey"  
Art Glover  
Red Cross 3; Pep Club 2; Girls' League comm. 3; After School Sports 3; T.C. Staff 4.



MARENGO, KARON JEAN "Keron"  
English Shaw  
Girls' League 2, 3, 4; F.N.A. 4; Girls' Glee 3, 4; Pep Club 2.

MARQUARDT, JANIS CAROL "Jan"  
Business Ed. Glover  
Girls' League Sec. 4; National Honor Society 3, 4; Pirettes, Sec. 3, Pres. 4; Exec. Board, Drill Leader 4; Homeroom Offices 1, 3; Sr. Mothers' Tea 2, 3; Pep Club 1; Big Sister 3, 4; Girls' League Rep. 3; A.S.B. comm. 3, 4; Spring Sports Ticket Seller 2; F.B.L.A. 2; Rogers Revue 2; Seppling Contest Winner 1.

MARTIN, LYNN RENEE "Lynn"  
History Whitman  
Honor Roll 1, 2, 3, 4; F.N.A. 2, 3, 4, Sec.; F.H.A. Parl. 3; Treas. 4; Homeroom Officer 1, 2, 3, 4; Pirettes 2, 3, 4; Pep Club 1; Speech Contest 2; Science Fair Winner 3; Cotton Cutie Candidate 2; Big Sister 3, 4; Business Office worker 3, 4; Girls' League Chrmn. 4; Ush-erettes 3; Latin Club 3, 4; Girls' League Rep. 1, 2; Student Council Rep. 1; P.T.S.A. Rep. 1, 2, 3.

MEEK, PATRICIA "Pat"  
Home Economics Glover  
Pep Club 1, 2; A.S.B. 1, 2, 3, 4; Girls' League 1, 2, 3, 4; Study Hall Checker 3, 4; Bookroom Worker 2, 3; Cotton Cutie Candidate 3; Girls' Chorus 4.

MEREWETHER, JEAN LOUISE "Jeanne"  
Math Shaw  
Girl of the Month; National Honor Society 3, 4; Girls' State Alternate 3; Science Fair Winner 3; Speech Contest Winner 2; Homeroom Officer 2, 3, 4; Honor Roll 2, 3, 4; Student Council 2, 4; All-State Orch.; Sr. Math 3; Rogers Senate 2, 3; Orchestra 2, 3, 4; A.S.B. Constitution Chrmn. 4; Courtesy Chrmn. 3. Girls' League V. Pres. 4.

MEIER, LOIS MARION "Lois"  
Home Economics Shaw  
Elections comm. 4; Golf Team 2, 3; Big Sister 3, 4; Girls' League 2, 3, 4.





**MERRICK, ARNIE ROBERT** "Arnie"  
Math Shaw  
Hall Patrol 3; Basketball 1; Football 2; Tennis 3.



**MIKKELSON, PATRICIA ANN** "Pat"  
Business Ed. Cooper  
Big Sister 3, 4; Rogers Record 3, 4; F.B.L.A. 3, 4; F.N.A. 3; A.S.B. 2, 3, 4; Girls' League 2, 3, 4; Usherette 3; Pep Club; Red Cross 2, 3, 4; Girls' Glee 2; Tennis 2; Library Rep.; Study Hall Checker.



**MILLER, JUDY ANN** "Judy"  
Art Glover  
Homecoming Queen 4; Homecoming Chrmn.; Jr. Prom comm. Chrmn.; Lilac Princess Tee Chrmn.; Pins and Points Chrmn. Pirettes; Spring Sports comm.; Big Sister; Usherettes; Dad and Daughter Dessert; Color Day; Christmas Projects comm.; Style Trends model; Powder Puff Football; Serving Girls; Homeroom Pres.; Sweater Day; Student Council Rep.



**MOLITOR, JAY** "Mo"  
Math Lidgerwood  
Hi-Y 3, 4; Sr. Math 3, 4; Golf 2, 3, 4; Homeroom Officer 3, 4; A.S.B. 1, 2, 3, 4; Boys' Fed. 1, 2, 3, 4; Boys' Fed. comm. 2; Intramural Sports 2, 3, 4; Honor Roll 1, 2.



**MONTANEY, LINDA** "Linda"  
Business Ed. Shadle  
Girls' League 3, 4; F.B.L.A. 4.

**MOONEY, GAYE LaRANE** "Gaye"  
History Shaw  
Debate 2, 3, 4; Best Girls' Speaker 3; Speakers' Bureau 2, 3, 4; Rogers Record 2, 3, 4; Editor 4; Quill and Scroll 3, 4; Jr. Press Club 3, 4; Senate Club 3, 4; Pres. 4; Spanish Club 2, 3, 4; Officer 2, 3, 4; F.H.A. Demonstr. Day winner 2; Student Council 3; Red Cross 4; Dance comm. 2; Greetings comm. 2; Big Sister 4.

**MORRIS, DONNA** "Donna"  
History Lidgerwood  
Girls' Glee; T.C. Seller; Atten. worker; Frosh Incoming comm.

**MORGAN, DENNIS HAROLD** "Dennis"  
History  
Boys' Fed. 1, 2, 3, 4; A.S.B. 1, 2, 3, 4.

**MOSSEY, JAMES F.** "Moss"  
History Hamilton  
Basketball 1, 2; Intramurals 1, 3, 4; Homeroom Officer; A.S.B. 1, 2, 3, 4; Boys' Fed. 1, 2, 3, 4.



**MERTES, VALENA LYNNE** "Lynne"  
Business Ed. Shaw  
Dance comm. 3; Chrmn. 4; Big Sister 3, 4; Pirettes 2, 3; Frosh Initiation 3; Sweater Day 3; Homecoming Coronation 3; Office worker 3, 4; Jr. Prom 3; Sr. Mothers' Tea 3; Dad and Daughter Dessert 4; F.N.A. 2, 3; F.B.L.A. 2, 4; Color Day Chrmn. 4; Usherette 3; Achievements 3.

**MILLER, JERRY** "Jerry"  
Science Hamilton  
Boys' Fed. 1, 2, 3, 4; A.S.B. 1, 2, 3, 4; Football 1, 2; Basketball 1, 2; Baseball 1; Track 1; Intramurals 3, 4.

**MINDERMAN, VERNON** "Vern"  
Art Bemiss  
Boys' Fed. 2, 3, 4; A.S.B. 2, 3, 4.





**MORTON, KAREN RAE** "Karie"  
 Science John Shaw  
 Choir 3, 4; Honor Roll 2, 3, 4;  
 Home Room Officer 2, 4; Student  
 Kitchen Committee 4; A. S. B.  
 Membership Committee 2; Senior  
 Math 3, 4; Secretary 4; Big Sister  
 3, 4; Girls' Glee Club 2; Library  
 Worker 3, 4; Charity Drive 3;  
 Girls' League 2, 3, 4; Y.F.C. 2, 3,  
 4.

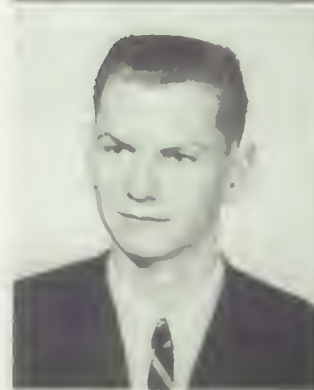
**MUHS, RICHARD** "Pauncho"  
 History Lidgerwood  
 Boys' Fed. 1, 2, 3, 4; A.S.B. 1, 2,  
 3, 4; Intramural Sports 1, 3, 4;  
 Homeroom Officer 2.

**MURPHY, ROY EUGENE** "Gene"  
 Science Shaw  
 Bookroom; Football 2; Track 2;  
 Baseball 3.

**MOUNTER, BEVERLY JEAN**  
 "Bev"  
 Business Ed. Freeman  
 Library worker 4; Pep Club 2.

**MURPHY, D'ARCY EUGENE**  
 "Murph"  
 Music Crowe Hi, Trail, B. C.  
 Band 1, 2, 3, 4; Dance Band 3,  
 4; Inland Empire Solo and En-  
 semble 3, 4; Wrestling 4; Orches-  
 tra 3, 4.

**MUZZY, JILLENE KAE** "Jill"  
 Whitman  
 Tennis 2, 3, 4; F.B.L.A. 4; F.N.A.  
 1, 2; Girls' League 1, 2, 3, 4;  
 Kitchen worker 2.



**NELSON, PATRICIA KAREN**  
 "Pat"  
 Business Ed. Orchard Prairie  
 Charity Drives 3; Girls' League  
 Rep. 3; Library worker 3; Red  
 Cross 4; F.B.L.A. 2, 3, 4; A.S.B. 2,  
 3, 4; Girls' League 2, 3, 4; Office  
 worker 4.

**NELSON, CHERYL MARIE**  
 "Cheryl"  
 Business Ed. Shaw  
 F.N.A. 3, 4; Style Trends model  
 2; Elections comm. 4; Atten. Of-  
 fice worker 3; Tag Day Sales 2, 3,  
 4; Girls' League 2, 3, 4; D.E.C.A.  
 4; A.S.B. 2, 3, 4.



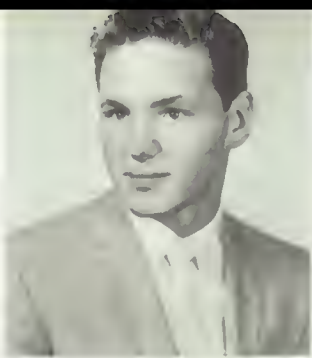
**NELSON, GARY A.** "Gary"  
 History  
 A.S.B. 2, 3, 4; Boys' Fed. 2, 3, 4.

**NICHOLS, SHARON KAY**  
 "Sharon"  
 Business Ed. Glover  
 Choir 4; Girls' Glee 2, 3; Girls'  
 League 1, 2, 3, 4; A.S.B. 1, 2, 3, 4.



**NICK, DON MICHAEL** "Nick"  
 History Columbia  
 A.S.B. 2, 3, 4; Boys' Fed. 2, 3, 4;  
 Red Cross 2, 3, 4.

**NORRIS, DALE** "Dale"  
 Math North Central  
 Football 1; Tennis 2; Home Room  
 Officer 4.



**NUTT, REX D. JR.** "Rex"  
Art Longfellow  
A.S.B.; Boys' Fed.; Intramural Sports.

**OAKES, PEGGY ANN** "Peg"  
Drama Lidgerwood  
Thespians 3, 4, Treas. 4, Clerk 3;  
Pep Club 1; Courtesy comm. Chrmn. 4; Livewires comm. 2; Mother Is A Freshman 3; Solid Gold Cadillac Props Chrmn. 2; Anastasia Publicity 2; Big Sister 3, 4; P.T.S.A. Rep. 3; Girls' League 1, 2, 3, 4; A.S.B. 1, 2, 3, 4; Tag Day Sales 1, 2; One Act Plays.



Many seniors check their credits, majors, and minors prior to graduation.

**O'BRIEN, SHARON LOUISE** "Sharon"  
Foreign Language Hamilton

National Honor Society 3, 4; Honor Roll 2, 3; Guidance Office Worker 4; Girls' League Officer Worker 3; Homeroom President 3; Big Sister 3, 4; Student Kitchen Comm. 1; Standards Comm. 4; Spanish Club 1, 2; French Club 3, 4; Pep Club 1, 2; Trophy Case Comm. 2; Red Cross Rep. 3; F.B.L.A. 4; Charity Drives 1, 2.

**OLSEN, JOHN A.** "J"  
Math Longfellow

National Honor Society 3, 4; Thespians 1, 2, 3, 4; Pres. 2; Treas. 3; Vive Pres. 4; Honor Thespian 3, 4; Homeroom Pres. 1, 2, 4; Red Barn Players 1, 2, 3, 4; Member of Board 3; Stage Pin 3; One Act Plays; Dear Phoebe; Rumpelstiltskin; Puss 'n' Boots; Mother Is A Freshman; Plain Princess; Wizard of Oz; Mystery for Christmas; Rogers Review; Best Actor.

**OLSON, DAVID C.** "Dave"  
Math Hamilton

Football 1; Basketball 1; Bookroom 2; Jr. Math 2; Boys' Fed. 1, 2, 3, 4; Red Cross Rep. 2, 3.

**OLIVER, REX** "Rex"  
History St. Pat's  
Homeroom Pres. 1; Hall Patrol; Cap.; Red Cross Rep.; Fire Squad.

**OLSON, CAROLYN LEE "Carol"**  
Business Ed. Longfellow  
A.S.B. 1, 2, 3, 4; Girls' League 1, 2, 3, 4; Pep Club 1, 2; Cafe Worker 3, 4; Homeroom Sec. 2, 3, 4.

**O'NEEL, SHARON KAY "Sharon"**  
Business Ed. Shaw  
Girls' League 2, 3, 4; Girls' Glee 2, 3, 4; Y.F.C. Club 3, 4; Courtesy Homeroom Chrmn. 3; A.S.B. 2, 3, 4; Girls' Glee Sec. 3.





**OSTRANDER, CHERYL ANN**  
**"Cheryl"**  
 Commercial Longfellow  
 National Honor Society 3, 4; Honor Roll 1, 2, 3, 4; Big Sister 3, 4; Pep Club 1; F.B.L.A. 3; A.S.B. Committee 4; Girls' League Representative 3; Student Kitchen 1; Home Room Officer 4; Home Room Courtesy Chrmn. 4; A.S.B. 1, 2, 3, 4; Girls' League 1, 2, 3, 4;  
**PARTRIDGE, DONNA JEAN**  
**"Candy"**

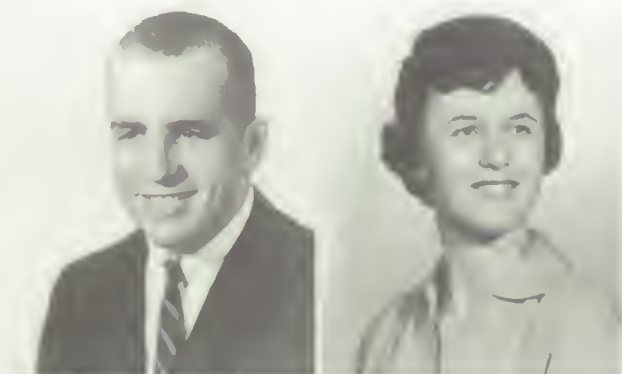
Distributive Ed. Shaw  
 D.E.C.A. 4; Girls' Glee 2, 3; Sec. 3; Choir 4; F.N.A. 2, 3, 4; Pep Club 2, 3; Girls' League Comm. 3, 4; A.S.B. 2, 3, 4; Study Hall Checker 4; Library Worker 4; Y.F.C. 2, 3, 4; Cotton Cutie Candidate 3; Femme Sportettes 3.

**PATTERSON, JUDITH ANN**  
 Business Ed. Arlington  
 F.H.A. 3; F.B.L.A. 4; Girls' League 2, 3, 4; A.S.B. 2, 3, 4; J.A.

**OWENS, VERA G.**  
 English Arlington  
 F.N.A. 1, 2; A.S.B. 1, 2, 3, 4; Girls' League 1, 2, 3, 4; Red Cross 3, 4.

**PATRICK, LINDA ANNE**  
**"Linda"**  
 Science Whitman  
 Girls' League 1, 2, 3, 4; A.S.B. 1, 2, 3, 4; Girls' League Comm. 1, 3, 4; A.S.B. Comm. 4; Big Sister 3, 4; Honor Roll; H. R. Offices 3, 4; Study Checker 3; French Club 2, 3, 4; Student Council Rep. 4; Intermural Sports 1, 2, 3, 4; Femme Sportettes 3, 4.

**PAULSSON, RUTH**  
**"Ruth"**  
 Business Ed. Shaw  
 A.S.B. 2, 3, 4; Girls' League 2, 3, 4; F.B.L.A. 2; Big Sister 3, 4; H.R. Offices 2, 3; Student Council Rep. 2, Y.F.C. 2, 3, 4; Honor Roll 2, 3, 4; Shop Office 2.



**PEARSON, BILL**  
**"Bill"**  
 Social Studies Hamilton  
 Football 1, 2, 3, 4; Baseball 1, 2, 3, 4; "R" Club 3, 4; Wrestling 2, 3, 4; Monitor 3; A.S.B. Chrmn. 4; Conductor 4; H.R. Offices 1, 2, 3, 4; Student Council 2, 3, 4; Boys' Fed. Rep. 2, 3; Dance Comm. 3.

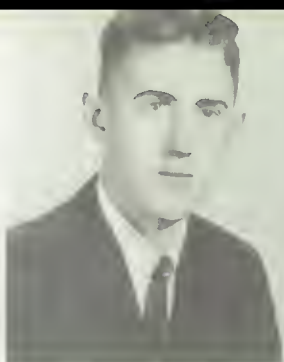
**PHILLIPS, FRANK**  
**"Frank"**  
 Mathematics Lidgerwood  
 Hi-Y 3, 4; Boys' Fed. Chrmn.; Homeroom Officer 1, 2, 3, 4; Golf 2, 3, 4; Senior Math Club, 3, 4; Con Comm.; Aviation Club 1; Junior Math 1; Intramural Sports; Honor Roll 1, 2, 3, 4; A.S.B. 1, 2, 3, 4; Boys' Fed. 1, 2, 3, 4.

**PEIRCE, RONALD D.**  
**"Ron"**  
 History Shaw  
 Boys' Fed. 1, 2, 3, 4; Football 3, 4; Homeroom Offices, Pres. 4; Boys' Glee 3, 4; Baseball 1, 2.

**PERSELLO, LORETTA**  
**"Loretta"**  
 Home Economics Arlington  
 Honor Roll 2, 3, 4; Pirettes 2, 3, 4; Big Sister 3, 4; Homeroom Officer 2; A.S.B. 2, 3, 4; Girls' League 2, 3, 4; Charity comm. 2.

**PHILLIPS, SUSAN MARIE**  
**"Suzy"**  
 Foreign Languages Hamilton  
 Pirettes 2, 3; Greetings Comm. 1, 3; Senior Mothers' Tea Decoration Comm. 3; Big Sister 3, 4; Homeroom Big Sister 4; Charity Drives 1, 2; Dad and Daughter Dessert Publicity Comm. 1; Student Kitchen 2; Latin Club 1, 2; Aviation Club 1; Pep Club 1; F.B.L.A. 4; Pins and Points Comm. 4.

**PIKE, MAUREEN**  
**"Mo"**  
 Business Ed. Shaw  
 Constitution Comm. 4; Student Council Rep. 3; Big Sister 4; Girls' League Rep. 2; Style Trends Comm. 3; Style Trends Model 3; Study Hall Checker 4; Tag Day Sales 2, 3; F.B.L.A. 3, 4; D.E.C.A. 4; Homeroom Officer.

**POWELL, JACK CHARLES****"Jack"**

History

Regal

Photography 2, 3, 4; Boys' Fed. 2, 3, 4; A.S.B. 2, 3, 4; T.C. Seller 4; Aviation Club 4.

**POWELL, LESLIE ELIZABETH****"Leslie"**

Rogers Record 3, 4; Editor 4; Quill and Scroll 3, 4; Pres. 4; Library Rep. 3; Girls' League Rep. 3; President 4; F.N.A. 3, 4; Big Sister 3, 4; Honor Roll; Girls' League 1, 2, 3, 4; A.S.B. 1, 2, 3, 4.

**PROSSER, AUDREY EILEENE****"Audie"**Business Ed. Havre Hi, Montana  
Majorette 2, 3, 4; Pirettes 2, 3, 4; Executive Board 2, 4; Pep Club 1; Senior Mothers' Tea 2; Dad and Daughter Dessert 2; Pirate Cove 2; Color Day Comm. 4; Serving Girls Comm. 4; Variety Show 2; Elections Comm. 3, 4; F.H.A. 1, 2; Homeroom Pres. 3; Sec. 2; P.T.S.A. Rep. 3; Big Sister 3, 4.**PUGH, CAROLE LYNN "Carole"**

Business Ed.

Shaw

Honor Roll 2, 3, 4; F.B.L.A. 2, 3, 4; Pres. 4; Pirettes 2, 3, 4; Big Sister 3, 4; Homeroom Offices, Pres. 2; Student Council Rep. 3; Red Cross Rep. 3; Girls' League Rep. 4; Pins and Points Chrmn. 4; Constitution comm. 4; Student Kitchen Chrmn. 4; Lost and Found comm. 3; Cafe. comm. 4; A.S.B. 2, 3, 4; Girls' League 2, 3, 4.

**RAINEY, JACQUELINE (EAGON)****"Jackie"**

Home Economics

Whitman

Girls' League 1, 2, 3, 4; Big Sister 4; A.S.B. 1, 2, 3, 4.

**RANTSCHLER, JOHN ERIK****"John"**

Science

Metaline Falls

Band 1, 2, 3, 4; Golf 3, 4; Dance Band 3, 4; Solo 3, 4; Ensemble 3, 4.

**REEDY, PEGGY****"Peggy"**

Business Ed.

Regal

Honor Roll 1, 2, 3; Girls' League 2, 3, 4; Homeroom Officer 2, 3, 4; Big Sister 3, 4; Pirettes 2, 3; Business Office 3, 4; F.B.L.A. 3; Bookroom 2; Sweater Day Chrmn. 4; Usherettes 2, 3, 4; A.S.B. 2, 3, 4; Dad and Daughter Dessert 4; Safe Driving Chrmn. 4.

**REUKAUF, TERRY LUCILLE****"Terri"**

Science

Whitman

Band 3, 4; F.N.A. 3, 4; Girls' League Comm. 2, 3, 4; Big Sister 3, 4; P.T.S.A. 1, 2; Tennis 2, 3; Orchestra 4; Pep Club 1, 2; Senior Math Club 3, 4; F.M.D.A. 1; Tag Day Sales 3; Girls' League 1, 2, 3, 4; Speech Contest 3; A.S.B. 1, 2, 3, 4; Girls' Glee 1; Trampoline 3, 4; Anastasia 2.

**RIDENHOUR, KRISTIN ANN****"Kris"**

Business Ed.

Cooper

Girls' League 2, 3, 4; Cafe Comm. 3; F.H.A. 3, 4; P.T.S.A. 3; F.B.L.A. 2.

**REYERSON, LARRY HAROLD****"Larry"**

Industrial Arts

Longfellow

Track 1, 2, 3, 4; Basketball 2, 3, 4; Football 1; Boys' Fed. 1, 2, 3, 4; "R" Club 3, 4; Band 1, 2, 3, 4.

**ROCKSTROM, HARRIET****"Harriet"**

English

Columbia

Girls' League 2, 3, 4; A.S.B. 2, 3, 4; F.N.A. 4.

**RIPLEY, DANNY DUANE****"Rip"**

Dramatics

Shaw

Thespians 2, 3, 4; Pres. 3, 4; National Honor Society 3, 4; Honor Roll 1, 2, 3, 4; Drama Workshop Players "Our Town," "The Valiant"; "Solid Gold Cadillac"; "Anastasia"; "Mother Is A Freshman"; "Puss and Boots"; "The Plain Princess"; Red Barn Players apprentice 3, 4; Homeroom Pres. 3; Stage Crew 2, 3, 4; Stage Mang. 4; All-School Variety Shows 2, 3, 4.





**ROBERTSON, JACK** "Jackson"  
History Whitman  
Audio Visual; Boys' Fed. 1, 2, 3, 4; A.S.B. 1, 2, 3, 4.

**ROBERTSON, BOB** "Robbie"  
Science Whitman  
Football 1, 2, 3, 4; Baseball 1, 2; Track 3, 4; "R" Club 3, 4; Pres. 4; Freshman Initiation Con 4; Homeroom Pres. 1, 4; Vice Pres. 2; Sec. 3; Boys' Fed. 1, 2, 3, 4; Dance Comm. 4; Big Brother 4; Cafe. Patrol 4; Junior Prom Comm. 3.



**ROSE, CANDACE JEAN** "Candy"  
Business Ed. Columbia  
F.B.L.A. 3, 4; Big Sister 3, 4; Pirettes 4; Courtesy Comm. 3; Points and Awards Comm. 4; Library Worker 2; Girls' League Comm. 2, 3, 4; A.S.B. 2, 3, 4; Study Hall Checkers 3.

**RUBY, GLORIA JEAN** "Glo"  
Business Ed. Shaw  
Girls' League 2, 3, 4; A.S.B. 2, 3, 4; Y.F.C. 2, 3, 4; Big Sister 3, 4; Morning Girls 2; Charity Drives comm. 3; Student Kitchen comm. 3; F.B.L.A. 2; Homeroom Sgt.-at-Arms 4; After School Sports 2.



**RUDOLPH, SHIRLEY JEAN** "Spot"  
Science Shaw  
F.N.A. 3, 4; Pirettes 3, 4; Homeroom Pres. 4; Big Sister 4; Girls' League comm. 3; Sr. Math 3, 4; Office worker 4; P.T.S.A. Rep. 3; Red Cross Rep. 3; Girls' League 3, 4; A.S.B. 3, 4.

**SALBERG, LINDA** "Linda"  
Business Ed. Longfellow  
Choir, 3, 4; Girls' Glee 2; Girls' League 1, 2, 3, 4; Main Office 4; Homeroom Officer 2, 3, 4; Sr. Mothers' Tea comm. 2; Big Sister 3, 4; A.S.B. 1, 2, 3, 4; Usherettes 3; Christmas Projects comm. 4; Tag Day Sales 1, 2; Red Cross Rep. 2, 3.



**SAND, RICHARD LEE** "Rich"  
History Hamilton  
Baseball; Junior Math 1; Wrestling 2, 3, 4; Dist. Runner-up 3; Cross Country 2; Speech Contest Winner 2; Golf 2, 3, 4; "R" Club 3, 4; National Honor Society 3, 4; Senior Math 3, 4; Band 1, 2, 3, 4; Orchestra 2, 3, 4; Drum Major 4; Homeroom Officer 1, 2, 3, 4; Boys' Fed. Fire Squad Chrmn. 4; Honor Roll 2, 3, 4; Spirit Comm. 4; A.S.B. V. Pres. 4.

**SATHER, NILS** "Nils"  
Math Whitman  
Aviation Club 2, 4; Senior Math 3; Radio Club 2; 2nd place Algebra Contest 1; Aviation Class Flights 2, 3, 4; Homeroom Officer 3, 4; Boys' Federation 1, 2, 3, 4; A.S.B. 1, 2, 3, 4; Honor Roll 2, 3, 4.



**SCATES, LINDA CAROL** "Linda"  
Science Arlington  
A.S.B. Rep. 4; Color Day Comm. 4; F.B.L.A. Officer 3, 4; A.S.B. Elections Committee 3, 4; Girls' League Rep. 3; F.N.A. Officer 2, 3; Girls' Golf 2, 3; D.E.C.A. 4; Speech Contest Winner 2; T. C. Seller 3; Big Sister 3; Red Cross Rep. 3; Pep Club 2.

**SCHAEFER, COROLJEAN** "Carol"  
Business Ed. Hamilton  
Student Council Rep. 1, 3; P.E. Checker 1; Study Hall Checker 2; Bulletin Board Comm. 2; Attendance Office Worker 3; Honor Roll 1, 2, 3, 4; Usherettes 4; Main Office Worker 4; Evaluation Comm. 4; Speech Contest 2; Dramatic Reading Cont. 1; Tag Day Sales 1, 3; Homeroom Sec. 3; Girls' League Rep. 4; Stage Crew



**SCHMIDT, DARLENE KAY** "Darlene"  
English Arlington  
Pirettes 3; A.S.B. Membership Chrmn. 4; Big Sister 3, 4; Charity Drives Chrmn. 3; Speakers Bureau 2, 3; French Club 4; F.H.A. 2, 3; Pirette Officer 3; Study Hall Checker 2; Student Council 2, 3; Debate 2, 3; Big and Little Sister Party 4; Girls' League 2, 3, 4; A. S. B. 2, 3, 4; Homecoming Comm. 2; "R" Week Comm. 2.

**SCHOENWALD, KAY LOUISE** "Kay"  
Business Ed. Pioneer, Walla Walla  
A.S.B. 2, 3, 4; Girls' League 2, 3, 4; F.B.L.A. 3, 4; F.H.A. 3; D.E.C.A. V. P. 4; Red Cross Rep. 2; Library Asst. 2; A.S.B. Comm. 4; Girls' League Comm. 2, 3, 4; Big Sister 3, 4; Greetings 4.



**SCHROYER, JANET CAROL**  
**"Jan"**  
 Science Shaw  
 Girls' League Comm. 2, 3, 4;  
 A.S.B. 2, 3, 4; Honor Roll 2, 3, 4;  
 F.N.A. 2, 3, 4; Elections Comm. 3,  
 4; Big Sister 3; Home Room Big  
 Sister 4; Home Room Officer 2,  
 4; Band 2, 3; Latin Club 3, 4;  
 Study Hall Checker 3, 4.



**SEABRANDT, MARGARET**  
**"Maggie"**  
 History Whitman  
 Big Sister 4; Senior Mothers' Tea  
 Comm. 3; Serving Girls 4; Girls'  
 Glee 4; Homeroom Officer; Girls'  
 League 1, 2, 3, 4; Pep Club 2; At-  
 tendance Office 3, 4; Bookroom  
 3; Charity Drives 2; P.E. Checker  
 1; Cafe. Comm. 2.



**SHERMAN, KATHLEEN ANN**  
**"Kathi"**  
 Art Glover  
 Pirettes 2, 3, 4; exec. board 3, 4;  
 V. Pres. 4; Drill Leader 4; T. C.  
 Senior Editor 4; Junior Prom Pub-  
 licity Comm. 3; Homeroom of-  
 fices 2, 3, 4; V. Pres. 3; Big Sister  
 3; Homeroom Big Sister 4; Student  
 Council Rep. 2; Scrap-book-Year-  
 book Chrmn. 4; Big Sister Decora-  
 tions Chrmn. 4; A.S.B. Elections  
 Comm. 4. Girls' League Treas. 4.

**SCHUH, JOHN**  
**"John"**  
 History Bemiss  
 A.S.B. 2, 3, 4; Boys' Federation 2,  
 3, 4.

**SHAFFER, BOBBI**  
 Foreign Language Arlington  
 Big Sister 3, 4; Study Hall Check-  
 er 2, 3; Tennis 2, 3, 4; Gym  
 Checker 2; Greetings Comm. 4;  
 Girls' League 2, 3, 4; A.S.B. 2, 3,  
 4; Femme Sportettes 2, 3, 4.

**SHIELDS, DONNA RAE** **"Donna"**  
 Business Ed. Shaw  
 F.B.L.A. 2, 3, 4; Student Kitchen  
 3; Girls' League 2, 3, 4; Big Sister  
 3; Christmas Comm. 3; A.S.B. 2,  
 3, 4; Honor Roll 2, 3, 4.

**SHORES, WILLIAM MICHAEL**  
**"Mike"**  
 Foreign Language Whitman  
 Baseball 1, 2; French Club 1, 2;  
 A.S.B. 1, 2, 3, 4; Boys' Fed. 1, 2,  
 3, 4; Speakers' Bureau 2; Debate  
 2; Homeroom officer.

**SHORT, RONALD ROY** **"Ron"**  
 Science Roosevelt High,  
 Honolulu, Hawaii  
 Football 1, 2, 4; Baseball 1, 2;  
 Homeroom officer 2, 4; Freshman  
 Initiation Comm. 4; "R" Club 4;  
 Boys' Fed. 1, 2, 3, 4; A.S.B. 1, 2, 4.



**SHOVE, ALFRED DONALD**  
**"Don"**  
 History Columbia  
 A.S.B. 1, 2, 3, 4; Boys' Fed. 1, 2,  
 3, 4; Football 1, 2, 3, 4; Basketball  
 1, 2; Track 1, 2, 3, 4; "R" Club 2,  
 3, 4; Spanish Club 3, 4; Latin Club  
 1; Homeroom officer 1, 2, 3, 4;  
 Senior Math 3, 4; F.T.A. 2, 3, 4;  
 Red Cross Rep. 2, 3, 4; March of  
 Dimes 2, 3, 4; Boys' Fed. Comm.  
 2, 3, 4; A.S.B. Comm. 2, 3, 4.

**SIMONSON, KARIN L.** **"Karin"**  
 Dramatics Shaw  
 Thespians 3, 4; Plays: Anastasia,  
 Solid Gold Cadillac; Big Sister 3,  
 4; Greetings 4; Dues and Drives  
 3; Pins and Points 3; Elections 4;  
 One Act Plays; Study Hall Check-  
 er.



**SINCLAIR, DAVID** **"Dave"**  
 Science Arlington  
 Aviation Club 2, 3, 4; Boys' Fed.  
 2, 3, 4; Aviation Class Flights 2,  
 3, 4; A.S.B.

**SLINKARD, LINDA JEAN**  
**"Poncho"**  
 Home Economics Bowdish  
 F.H.A. 2, 3, 4; Femme Sportettes  
 3, 4; F.H.A. Comm.; After School  
 Sports 2; Girls' League 2, 3, 4;  
 A.S.B. 2, 3, 4; Big Sister 3; Li-  
 brary Worker 4.





**SMITH, PENELOPE ELLEN** "Penny"  
Business Ed. Shaw  
F.B.L.A. 2, 3, 4; Big Sister 4; Attendance Office Worker 3; Girls' League 2, 3, 4; A.S.B. 2, 3, 4; Red Cross 2, 3, 4; Spanish Club 4; Bookroom Worker 2.

**SMITH, SAMUEL ROBERT "Sam"**  
History Whitman  
Spirit Comm. Chrmn. 4; Choir 2, 3, 4; Homeroom offices 1, 2, 3, 4; Boys' Fed. Con comm. 4; Dance comm. 4; Choir offices 3, 4; Hall Patrol 3. A.S.B. Pres. 4.

**SNYDER, GORDON ROYCE** "Royce"  
History Bemiss  
Football 2, 3; Basketball 2, 3; Homecoming Escort 2; Homecoming Chrmn. 4; R Week date; A.S.B. 2, 3, 4; Boys' Fed. 2, 3, 4; Hall Patrol 2, 3; Student Council Rep. 2, 3, 4; Boys' Fed. Chrmn. 4; Dance comm. 4; Homeroom officer 2, 3, 4; Welcoming comm. 2, 3.

**SMITH, RONALD** "Ron"  
History Walla Walla High School  
Boys' Federation 3, 4.

**SMULAN, WAYNE P.** "Crabs"  
Distributive Ed. Gonzaga Prep  
Football 1; Homeroom officer 1; Boys' Fed. 1, 2, 3, 4.

**SORENSEN, CHARLES "Chuck"**  
Art Longfellow  
D.E.C.A. 4; Band 1, 2; A.S.B. 1, 2, 3, 4; Boys' Fed. 1, 2, 3, 4.

**SORENSEN, ROBERT JOHN** "Bob"  
Science Hamilton  
Track 2; Cross Country 2; Spanish Club 3, 4; Weight-lifting 3; Boys' Fed. 1, 2, 3, 4; A.S.B. 1, 2, 3, 4.

**SPENCER, JUDITH ANN "Judy"**  
Home Economics Arlington  
Girls' League 1, 2, 3, 4; Girls' Glee 2.

**STAIRS, CLARA M.** "Claire"  
Business Ed. Prescott  
A.S.B. 3, 4; Girls' League 3, 4.

**SPARKS, JANICE KAREN** "Janice"  
Business Ed. Lidgerwood  
Big Sister 4; Atten. worker 3; F.B.L.A. 2, 3; F.H.A. 3; Homeroom officer 3; Girls' League 1, 2, 3, 4; A.S.B. 1, 2, 3, 4; Red Cross 1, 2, 3, 4.

**SPINNELL, GARY LEE** "Gar"  
Science Shaw  
Baseball 2, 3, 4; Hi-Y 2, 3; R Club 3, 4; Con Conductor 3; Homeroom officer 2, 3, 4; Boys' Fed. 2, 3, 4; A.S.B. 2, 3, 4; Ticket Seller 4.

**STANLEY, MARY KAYE "Mary"**  
Social Studies Longfellow  
Homeroom Pres. 3; Girls' League Rep. 3; Style Trend Model 3; Serving Girls 4; Greetings 4; Big Sister 3, 4; Gym Checker 2, 3; Band 1, 2, 3, 4; Red Cross Rep. 2, 3; Shop Office 4; Charity Drives 2, 3; Cafeteria Comm. 2; Homeroom offices 1, 2, 3; Music Festival Honor Band 2, 3, 4; Eastern Washington Ensemble Meet 1, 2, 3, 4.





**STAVIG, SHARILYN KAE** "Sharri"  
Business Ed. Hamilton  
Spanish Club 1; F.B.L.A. 2, 3; Pi-  
rettes 3; Speech Contest 2, third  
prize, extemp.; Homeroom officer  
1, 2, 4; Honor Roll 1, 2, 3; Sen-  
ior Mothers' Tea co-Chrmn. 2;  
Honor Roll Comm. 2; Style Trends  
Model 2; Big Sister 3; Homeroom  
Big Sister Chrmn. 4; one-act plays  
1, 2; Study Hall Checker 3.

**STECKMANN, PHILLIP DAVID** "Phil"  
Music Bemiss  
Band 2, 4; Solid Gold Cadillac 2;  
Anastasia 2; Boys' Fed. 2, 4;  
A.S.B. 2, 4; Brass Sextet 2; De-  
bate 2.



**STEWART DIONE** "Stew"  
Foreign Languages Whitman  
T.C. Staff 2, 3, 4; Editor 4; Na-  
tional Honor Society 3, 4; Triple  
Trio 4; Choir 2, 3, 4; All-North-  
west Choir 2; Girls' Glee 1; Big  
Sister 3; Homeroom Big Sister 4;  
Christmas Projects Chrmn. 4; Sen-  
ior Mothers' Tea co-Chrmn. 3; Dad  
and Daughter Dessert 2, 3; Charity  
Drives 3; Scrapbook-Yearbook 4;  
Usherettes 2; Cafeteria 2.  
A.S.B. Treas. 4.

**STINGER, PHILIP L.** "Phil"  
Industrial Arts Longfellow  
Football 1, 2; Track 1; Wrestling  
1; Student Council 2; Boys' Fed.  
1, 2, 3, 4.



**ST. JOHN, DELORES** "Dee"  
Business Ed. Whitman  
Pep Club 1, 2; Girls' Glee 2;  
Study Hall Checker 2, 3; F.B.L.A.  
2, 3, 4; Big Sister 3, 4; Charity  
Drives 2, 3, 4; Cafeteria Comm.  
2; A.S.B. 1, 2, 3, 4; D.E.C.A. 4.

**STULTZ, PHYLLIS** "Phyllis"  
Business Ed. Lidgerwood  
Girls' League V. Pres. 4; Thespian  
Sec. 2, 4; Plays: Puss In Boots, 2,  
3; Mother is a Freshman 3; Wiz-  
ard of Oz 3; Come Rain or Shine  
4; One Acts 2, 3; Big Sister 3;  
A.S.B. Membership Chrmn. 3;  
Girls' League Rep. 1, 2, 3; Home-  
room officer.

**SUKSDORF, JULIE KAYE** "Julie"  
History Shaw  
Homeroom officers 2, 3, 4; Girls'  
League Rep. 2; Library Rep. 2;  
Study Checker 2, 3, 4; Frosh Ini-  
tiation 4; F.B.L.A. 2, 3, 4; Usher-  
ettes 4; Girls' Glee 3; Tag Day  
Sales 2, 3, 4; Dad and Daughter  
Dessert 4; Lilac Princess Tea 3;  
A.S.B. Rep. 3; Dance comm. 4;  
Pep Club 2; Girls' League 2, 3, 4;  
F.H.A. 2; Big Sister 3, 4.

**SWIM, HAZEL** "Hazel"  
Home Economics Whitman  
A.S.B. Comm. 4; Girls' League  
Comm., Stamps 3, Greetings 4;  
Red Cross Rep. 3; Girls' Glee  
Club 1, 2; Girls' League Drives 1,  
2, 3, 4; After School Sports 1, 2,  
3, 4; Study Hall Checker 4.



A few of the seniors look over the  
display of announcements in the  
main hall.





**TEATS, JESS ELDEN** "Jess"  
Business Ed. Bemiss  
Boys' Fed. Treasure 4; Pins and  
Points Chrmn. 2, 3; Pins and Points  
Co-Chrmn. 2; Conductors 2; Book-  
room 2, 3, 4; Wrestling 2, 3, 4;  
Dads' Night 2, 3.  
Boys' Fed. V. Pres. 4.

**THORVUND, RICHARD** "Rich"  
English Shaw  
A.S.B.; Boys' Fed.

**TIBBETT, SHARON** "Sharon"  
English Shaw  
F.N.A. 4; A.S.B. 2, 3, 4; Girls'  
League 2, 3, 4.

**THALER, JON J.** "John"  
Math Lidgerwood  
Homeroom officer 1, 3, 4; Junior  
Math Club 2; Senior Math Club  
3, 4; Intramural Sports 3, 4; De-  
bate 4; French Club 2.

**THURSTON, DIANE LA RAE** "Diane"  
History Longfellow  
F.B.L.A. 2; Year Book Comm. 2;  
Girls' League Rep. 1, 2, 3; Big  
Sister 4; Pep Club 1, 2; Girls'  
Glee 1; Choir 2; Stamps Comm.  
4; Business Office Worker 3, 4;  
Cashier 4; Bulletin Monitor 1, 2,  
3; Girls' League 1, 2, 3, 4.

**TISH, BARBARA** "Barb"  
History Glover  
Homeroom officer 2; Pep Club 2;  
A.S.B. 1, 2, 3, 4; Girls' League 1,  
2, 3, 4.



**TONEY, FORREST** "Forrest"  
Social Studies Whitman  
Red Cross Rep. 3; Aviation Club  
1, 2; Boys' Fed. 1, 2, 3, 4.

**TRENT, TERRY** "Terry"  
Industrial Arts Longfellow  
Boys' Fed. 1, 2, 3, 4; A.S.B. 1, 2,  
3, 4; Rifle Club 1, 2.

**TUCKER, RICHARD WILLIAM** "Tuck"  
Math Longfellow  
Basketball 1, 2, 3, 4; Track 1, 3, 4;  
Golf 2; Football 4; "R" Club 3, 4;  
"R" Club Corresponding Sec. 4;  
National Honor Society 3, 4;  
Freshman Algebra Contest, third  
place, 1; Boys' Fed. V. Pres. 4;  
Homeroom officer 1, 2, 3, 4;  
Mother and Son Banquet Comm.

**UPDIKE, STEVEN A.** "Gunner"  
Math Hamilton  
Basketball 1, 2, 3, 4; Football 1,  
2; Golf 2; Boys' Fed. 1, 2, 3, 4;  
Student Council 2, 4; Red Cross  
Rep. 1, 2; Ticket Seller 4; Con-  
ductor 3; Frosh Initiation 4; A.S.B.  
Rep. 3; Honor Roll 1, 2; Home-  
room officer 1, 2, 3, 4; Home-  
coming Escort 4.

**VAN DUSEN, JERRY** "Jerry"  
English Shaw  
A.S.B.; Boys' Fed.

**VARIANO, MARLENE ANN** "Marlene"  
Home Economics Marycliff  
Big Sister 4; Girls' League 3, 4;  
A.S.B. 3, 4; Senior Mothers' Tea  
Comm. 3; Usherette 4; Homeroom  
officer 3; Homecoming 4; Study  
Hall Checker 4; Trophy Case  
Comm. 3.





**VEDVIK, LILLIAN** "Lil"  
Business Ed. Bemiss  
Girls' League Comm. 2, 3, 4;  
Dance Comm. 4; Sweater Day 4;  
Study Hall Checker 2, 3; A.S.B. 2,  
3, 4; Usherettes 2, 3; Pep Club  
2; Style Trends 4; Dad and Daugh-  
ter Dessert 4; Girls' League Rep.  
2, 3; Home Room Officer 2, 3, 4;  
Girls' League Off. 4; Big Sister 3,  
4; Powder Puff Football 3.

**VOSAHLO, JAMES WAYNE**  
"Jim"

History Shaw  
Boys' Fed. 2, 3, 4; Choir 3, 4;  
A.S.B. 2, 3, 4; All State Musical  
3.

**WAGNER, YVONNE FAE**  
"Vonnie"

Business Ed. Whitman  
Pep Club 1; Pirettes 2, 3; Girls'  
League Comm. 2, 3, 4; Serving  
Girls 2, 4; Spring Day 2; Usher-  
ettes 4; Dues Drives 3; Senior  
Mothers' Tea 3; Courtesy 2;  
Christmas Projects 2; Dramatic  
Reading Finalist 1; Speech Con-  
test 2; A.S.B. Comm.; Elections  
3, 4; Homeroom officers 2, 3; Pres.  
2, A.S.B. Rep. 3; F.B.L.A. 2.

**VORLICKY, JOHN W.** "John"  
Science St. Patrick's  
Boys' Fed. 1, 2, 3, 4; A.S.B. 1, 2,  
3, 4.

**WAGGONER, HOWARD JACK**  
"Howie"  
Math "Gonzaga"

Football 2, 3, 4; Basketball 2, 3;  
Track 2; Boys' Fed. 2, 3, 4; Home-  
room officer 2, 3, 4; Red Cross  
Rep. 2, 3, 4.

**WALKER, NANCY** "Nancy"  
English Central Valley  
A.S.B.; Girls' League.



**WALKER, RUSSELL WAYNE**  
"Russ"  
English Cooper  
A.S.B. 2, 3, 4; Boys' Fed. 2, 3, 4.

**WARD, MARY MARGARET**  
"Bones"  
Music St. Xaxier  
Band 1, 2, 3, 4; Orchestra 1; Girls'  
Glee Club 3; Home Room Officer  
2, 3; Girls' Track 1, 2; Girls' Bad-  
minton 1; Girls' Basketball 1, 2;  
Girls' Softball 1; Girls' League 1,  
2, 3, 4; A.S.B. 1, 2, 3, 4.



**WARREN, ROBERT LEE** "Bob"  
Art Whitman  
Hall Patrol 3; Boys' Fed. 1, 2, 3, 4.

**WEATHERMAN, EARL CURTIS**  
"Butch"  
Science Whitman  
Tennis 1, 2, 3, 4; Student Council  
2, 3; Home Room officer 3; Boys'  
Fed. 1, 2, 3, 4; A.S.B. 1, 2, 3, 4.



**WEHR, LARRY ALLEN** "Larry"  
Music Columbia  
Orchestra 2, 3, 4; EWMEA Or-  
chestra 3, 4; CWSE Orchestra  
Festival 4; Rifle Club 2, 3, 4; Civil  
Defense 2, 3; A.S.B. 2, 3, 4; Boys'  
Fed. 2, 3, 4.

**WELCH, BARBARA ADELL**  
"Barb"  
Business Ed. Lidgerwood  
Girls' League 1, 2, 3, 4; A.S.B. 1,  
2, 3, 4; Student Council Rep. 3;  
F.B.L.A. 3, 4; Big Sister 4; Live-  
wires Com. 2; Color Day Com. 2;  
Home Room officer 2, 3; Cotton  
Tag Day Sales 1, 2; Usherettes 4;  
Cutie Finalist 2; P.E. Checker 3.





WELLINGTON, MARTHA LORRAINE "Martha"  
Business Ed. Shaw  
Home Room Pres. 3; Modern  
Dancing 3; Elections Comm. 4;  
Big Sister 4; Girls' League 2, 3, 4;  
A.S.B. 2, 3, 4; Red Cross 2, 3, 4.

WELTER, DENNIS "Denney"  
English St. Patrick's  
Red Cross Rep. 4; Boys' Fed. 2, 3,  
4; A.S.B. 2, 3, 4; 'Come Rain or  
Shine' Production 4.



WENTZ, CAROLINE CLARA "Caroline"  
English Shaw  
F. T. A. 2; Scrapbook - Yearbook  
Comm. 3; Student Kitchen 4;  
P.T.S.A. Rep. 3; Girls' League 2,  
3, 4; A.S.B. 2, 3, 4; Honor Roll 3;  
Big Sister 4.

WHETZEL, RALPH HAROLD  
Math Lidgerwood  
Tennis 2, 3; Orchestra 1, 2, 3.



WHIPPLE, MICHAEL DALE "Mike"  
English Lidgerwood  
Boys' Fed. 1, 2, 3, 4; Wrestling  
1, 3, 4; Track 3, 4; A.S.B. 1, 2, 3,  
4.

WHITE, EVA MAE "Mae"  
F.N.A. 4; Rogers' Writers 2;  
Y.F.C. 3; Speech Festival 2; Girls'  
League 2, 3, 4; A.S.B. 2, 3, 4.



WIDGER, ROBERT LOWELL "Bob"  
Fine Arts Hamilton  
A.S.B. 1, 2, 3, 4; Boys' Fed. 1, 2,  
3, 4; Hall Patrol 3.

WILLIAMS, ELEANOR "Eleanor"  
Business Ed. Longfellow  
Girls' League; A.S.B.; Girls' Glee  
1, 2; Girls' League Comm.; Big  
Sister; Pep Club; Honor Roll 1,  
2, 3, 4; F.B.L.A.; Homeroom Of-  
ficer; Charity Drives; D.E.C.A.



WILSON, DAVID "Dave"  
Drama Hamilton  
Thespians 3, 4; Puss 'n' Boots;  
Mother Was A Freshman; Plain  
Princess; Football 1, 2; Basketball  
2; Wrestling 1; Baseball mang. 2;  
Track 1; Boys' Fed. 1, 2, 3, 4; Stu-  
dent Council 3; A.S.B. 1, 2, 3, 4.

WILSON, DOROTHY JEAN ANN "Dodie"  
Home Economics Whitman  
F.H.A. 1, 2, 3, 4; Spanish Club 2,  
3, 4; A.S.B. 1, 2, 3, 4; Girls'  
League 1, 2, 3, 4; Pep Club 2;  
Girls' League comm. 3; Tag Day  
Sales 1, 2, 3; Band 1, 2; Big Sister  
3, 4; Red Cross 3.



WILSON, DOTTY ELAINE "Dotty"  
Mt. Vernon Hi, Oregon  
A.S.B. 4; Girls' League 4.

WINKLE, KENNETH RICHARD "Ken"  
Music Bemiss  
All State Orchestra 3; Orchestra  
2, 3, 4; Band 2, 3, 4; Football 2,  
3; Wrestling 2; Track 2; Hall Pa-  
trol 3, 4; H. R. Officer 3, 4; Boys'  
Fed. Rep. 2, 3; Treasure Chest  
Salesman 4.



**WOICIK, CECELIA ANN "Zee"**  
Business Ed. Bemiss  
F.B.L.A. 3, 4; Big Sister 3, 4; Style Trends Comm. 3; Pen Club 2; Cafe. Worker 3; Variety Show 3; Girls' League Comm. 3; Atten. Worker 4; A.S.B. 2, 3, 4; "B" Honor Roll 3; Third Place Curr. Aff. Contest.



**WOOLEN, JEANNE "Woolie"**  
Home Economics Hamilton  
Big Sister 3, 4; Girls' League 1, 2, 3, 4; Spanish Club 1, 2, 3, 4; Bookroom 3, 4; F.B.L.A. 4; Elections Comm. 4; Cafe. Comm. 3; Christmas Decorations Comm. 3; A.S.B. 1, 2, 3, 4.



**YATES, LORETTA B. "Lori"**  
History Lidgerwood  
Student Council Rep. 2, 3; Pi-ettes 2, 3; F.B.L.A. 4; F.H.A. 1; Girls' Glee 2, 3, 4; Solid Gold Cadillac; Anastatia; Lost and Found Comm. 2; Red Cross Rep. 1; Gym Checker 2; Pep Club 1; Bookroom 1, 2; Usherettes 3; Girls' League 1, 2, 3, 4; A.S.B. 1, 2, 3, 4.



**WENDT, LARRY ALAN "Larry"**  
History N. W. Christian  
A.S.B.; Boys' Fed.

**WOODWORTH, THOMAS "Tom"**  
GARY  
History Arlington  
Band 2, 3, 4; Boys' Fed. 2, 3, 4; Football 2, 3; Spanish Club 3, 4; Orchestra 2, 3, 4.

**WORKMAN, MARY LOUISE "Mary"**  
Business Ed. Regal  
Girls' League 2, 3, 4; D.E.C.A. 4; A.S.B. 2, 3, 4; Pep Club 2; Variety Show 3; A.S.B. Pins and Points 4.

**YOUNG, MARGARET ROSE "Marg"**  
History Marycliff  
Girls' League 3, 4; Usherettes 4; Dews and Drives 4; Business office 4; Home Room officer 3; Big Sister 4; Style Trends 3; A.S.B. 3, 4.

**BEITEY, DENNIS JAMES "Denny"**  
Math Shaw  
Hall Patrol 2, 4; Boys' Fed. 2, 3, 4; Latin Club, 2, 3; Red Cross 2, 3, 4.



# Senior Class Officers



RICH TUCKER  
Vice-President



LYNDA GORMAN  
Secretary



BUTCH BIRCUMSHAW  
President



STEVE UPDIKE  
Sergeant-at-Arms



PAT GARNSEY  
Treasurer



Lynn Martin



Dennis Rowe



Diane Deahl



Steve Coon



Nancy Fisher and Nancy Bush



Karen Johnson



Maggie Seabrandt



Dione Stewart

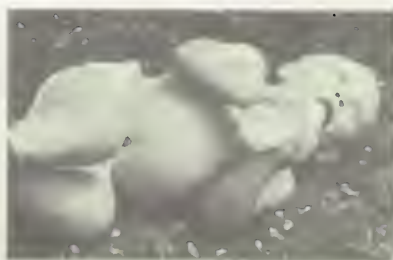


Larry Lambert





Steve Updike



Denny Foland



Lynda Gorman



Bill Pearson



Jim and Mary Burnette



Linda Salberg



Nancy Walker

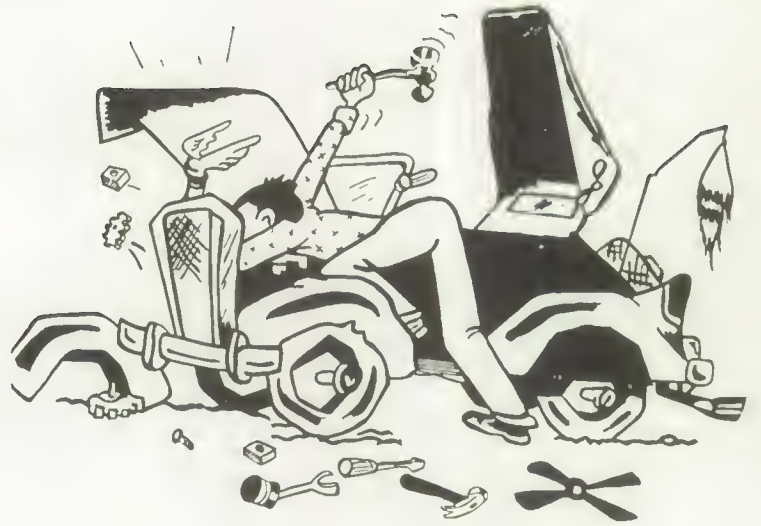


Kathi Sherman



Arvid Anderson

# Autographs





# Juniors, Sophomores, Freshmen



moving up



THOMAS ABLEMAN  
MICHAEL ADAIR  
KAREN ADAMS  
ROBERT ADAMS  
DENNIS AHLSTRAND

STEPHEN ALLEN  
DIANNA ANDERSON  
HARLAN ANDERSON  
LEONARD ANDERSON  
MARVIN ANDERSON

MICKEY ANGIOI  
RICHARD ANTHONY  
DARYL ANYAN  
REBECCA ARMSTRONG  
GERALD ARP

PEGGY ASHLEY  
LARRY ASLIN  
ROSIE ATKINSON  
JAMES AYERS  
SHIRLEY BACON

## *Juniors*

DAN BAKER  
BEVERLY BAILY  
GERALDINE BARLETT  
JOYCE BAUMP  
MARY BELLMAN

DOUGLAS BENDER  
WILLIAM BENTLEY  
PAUL BERG  
KENT BIEBER  
LaDONNA BILLIGMEIER

MARUEEMA BILLIGMEIER  
SUSAN BIRDSSELL  
ARLEEN BIRGE  
EUGENE BISHOP  
ARTHUR BLODGETT

JOHN BOBERG  
DAVID BODEY  
IMOGENE BOLING  
JAMES BONNER  
COLLEEN BOUNDS

NICKI BRACKEN  
MONTE BRAY  
DARLENE BREEDEN  
MELVIN BREDSON  
LONNIE BROCKWAY





CONNIE BROWN  
 DIANE BROWN  
 JAMES BROWN  
 LARRY BROWN  
 MARVIN BROWN



TOM BROWN  
 KAY BUCHOLZ  
 PEGGY BUCKLES  
 CARLA BUNCH  
 KAREN BURRILL



SHERRY BURROUGHS  
 FORREST BURTON  
 SUSAN BUTT  
 MIKE CAMERON  
 SHERAN CARLSON



PATSY CARMACK  
 PATRICIA CARNEY  
 TOM CARPER  
 JO CARR  
 JACKIE CARTER



## *Juniors*



KATHRYN CARTER  
 DON CECIL  
 LOUISE CHENEY  
 ARTHUR CHMURA  
 BILL CHRISTENSEN



EDWIN CHRISTENSEN  
 LARRY CHRISTENSEN  
 FRANCIS CLASON  
 CAROL COFFMAN  
 JAMES COLUMBO



CAROL CONNER  
 SHELLEY CONNER  
 LARRY COTTER  
 JERRY CRAMPTON  
 ROBERTA CRAWFORD



CONNIE CRESS  
 PAT CUMPTON  
 DIANA CUNNINGHAM  
 GUY CURTIS  
 YVETTE DAVENPORT



REG DAVIS  
 ROBERT DAVIS  
 STEPHEN DAVIS  
 SHARON DeGRAFFENREID  
 CLARA DELGER



SUE DOUTHITT  
LARRY DOWNING  
GARY DRAKE  
SHERRY DRAKE  
TERRY DRAKE

JIM DUBBS  
DALE DENNIS  
PAT DEVINE  
DEVONIA DOLAN  
BONNIE DOOLITTLE

JIM DUNCAN  
JIM DYRESON  
BOB EDENS  
BEVERLY EDGERTON  
BILL EDLIN

BARBARA EDWARDS  
CHARLOTTE ELDRED  
CLAUDIA ELDER  
LARRY ELVERUM  
CAROLYN ERNST

## *Juniors*

DOROTHY ETHREDGE  
LOUISE FABUNAN  
CLIFFORD FERGUSON  
EVELYN FERREL  
MICHAEL FISK

PAT FISK  
LARRY FLANAGAN  
KATHY FLANIGAN  
BOB FLEISHMAN  
GARY FOLAND

BILL FORSMAN  
BOB FRANKLIN  
KAREN FREY  
JEANETTE FRIOT  
LARRY FRIOT

MIKE FULLER  
SID GABRIEL  
MICHELLE GALE  
LINDA GAMBY  
BOB GAMBY

STEVE GAY  
JENNIFER GENT  
BONNIE GILBRECH  
PHYLLIS GILMORE





DONNA COOKLE  
 VERNIA GRAY  
 KERRY GREEN  
 BECKY GREGERSON  
 MICHAEL GUAY

GARY GUNNING  
 JANET HAGENSON  
 LARRY HAGENSEN  
 JUDI HALL  
 LINDA HALL

ROBERTA HALL  
 BETTY HAMANN  
 BARBARA HAMBLEY  
 JOANNE HAMILTON  
 MICHAEL HAMLIN

JERRE HANCOCK  
 JOHN HARALSON  
 TERRY HARMON  
 DONALD HARRIS  
 NORMAN HATTENBURG



## *Juniors*



IRWIN HAYNES  
 THOMAS HAYS  
 JAQUELINE HENSEN  
 PAM HARGRAVE  
 SALLY HARRIS

MARILYN HASTINGS  
 KEN HEARRON  
 JANET HELTEN  
 LINDA HEMSTROM  
 MARY HENTHORN

ELLIOTT HENRY  
 ROBERT HIATT  
 WAYNE HIEB  
 KENNETH HILL  
 MARILYN HILL

GLENNA HINKLEY  
 DARLENE HOBBS  
 FAY HEOGH  
 CAROL HOLCOMB  
 IRNESTINE HOLLEY

CAROL HOTTMAN  
 TERRY HOTTMAN  
 TRUDY HOUGER  
 JANICE HOWELETTE  
 ROGER HUGHES



LINDA HUGUENIN  
TERRY INMAN  
CHARLES IRVING  
ROGER JACKY  
DEAN JACOBSON

JACK JENSEN  
ANGIE JIMENEZ  
LORNA JOHANSEN  
KARIN JOHANSON  
CARL JOHNSON

CAROL JOHNSON  
CHRISTINE JOHNSON  
EUGENE JOHNSON  
GREGG JOHNSON  
KENITH JOHNSON

LARRY JOHNSON  
CORINNE JOLGEN  
DIANNE JOLGEN  
DAVID JONES  
JERRY JONES

## *Juniors*

MARILYN JONES  
ARLETA JUDD  
MARY LOU JURICEK  
JODY JURY  
STEVE KACZOR

LOUISE KASSEN  
SHARON KELLY  
TIM KELLY  
GARY KENNEDY  
BILL KENWORTHY

TERRY KENWORTHY  
DONALD KEON  
MARITA KILLIN  
LINDA KINGSLEY  
WALTER KINNAN

JEANETTE KNIGHT  
JAMES KOBLOTH  
SHARLYNE KOERPER  
RICHARD KORTE  
JILL LAKEN

COLLIN LAMB  
GARY LAMBERSON  
SHERRY LAMBERT  
SHARON LARSON  
GARY LEE





RON LYKINS  
 RANDY LYLES  
 BILLIE LEESON  
 KENNETH LEWIS  
 SHERYL LINDGREN



GERRI LINDGREN  
 ROBERT LINEBARGER  
 CHERYL LITTLEFIELD  
 JANINE LITTLEFIELD  
 JANCE LOBECK



BOB LOKKEN  
 IRA LONG  
 LEN LONG  
 MARCIA LOOKABAUGH  
 LAURA LOSIE



JEAN LUKE  
 BONNIE McAVOY  
 CLIFF McCOY  
 LARRY McDONALD  
 LESLIE McGEE



SANDY McGINNIS  
 DALE MADSEN  
 DIANNE MARDEN  
 EVELYN MARTIN  
 JOË MARTIN



LINDA MARTIN  
 JACQUELINE MASSENDER  
 SANDRA MAST  
 SHARON MASTERSON  
 DAWN MEAD



MARY MEAD  
 GEORGE MEIER  
 GINA MENETTO  
 DONNA MILDES  
 BOB MILLER



ART MILLER  
 DICK MILLER  
 MARY ANN MILLER  
 BEVERLY MILLIKEN  
 KATHY MINDERMAN



ANITA MITCHELL  
 PATRICIA MIZE  
 BILL MOLLER  
 VICKI MOLLER  
 TERRY MONTANYE



JACQUELINE MORAN  
DEAN MORGAN  
FOSTER MORGAN  
CAROL MORRIS  
TOM MORRIS

BILL MORTENSON  
LES MOSENG  
LAURA MOSER  
JOE MULKEY  
SHARON MUNSON

DALE MURPHY  
ELIZABETH MURPHY  
NICK NACCARATO  
CHARLES NELSON  
RICHARD NELSON

RICK NELSON  
LOU ANN NEW  
GLADYS NORDBY  
DAVE NOVELLI  
CAROL NUGENT

## *Juniors*

DEIDRE NUTT  
PAT NYREEN  
PAM OCHS  
PETE ODEGARD  
KAREN OLSEN

KATHY OLSEN  
RON O'NEEL  
PAT OPSAL  
LINDA OSTER  
SANDRA OSTER

JOHN OWENS  
SANDRA PAFFUMI  
JUDY PARKINS  
NINA PASLER  
JIM PARRY

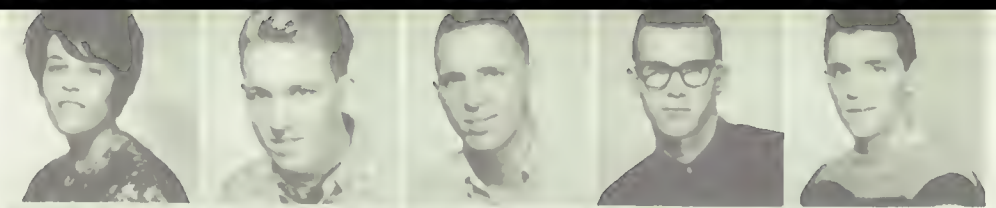
TOM PARTCH  
CAROL PAVEL  
KAY PENDELL  
DAN PERRY  
GENE PETEFISH

MIKE PETERSON  
BILL PHILLIPS  
SANDRA PHILLIPS  
BRUCE PLEWMAN  
LARRY POINTER





FAT FOLELLO  
RON PONTO  
WALT POOL  
LYLE POOLE  
DAN POWERS



JUDITH RAMSVIG  
DOLLY RANTANEN  
HAROLD RATALAFF  
JUDITH REDMOND  
TERRY REED



MARY ANN REINHARDT  
NANCY RENFRO  
MIKE RODES  
MEG RICH  
DICK RICHINGS



STEVE RICKARD  
MICHELE RICKETTS  
LARRY RIEKENA  
MARY ROATH  
JIM ROBB



## *Juniors*



BETTY ROCKSTROM  
SHARON ROLLER  
CONNIE ROSE  
GARY ROTH  
ROSE RUTHERFORD



MARJORIE SCHULTZ  
MARY SCHULZ  
LARRY SCHLAHT  
KENNETH SCOTT  
BRUCE SEILER



DAVID SEVERSON  
SANDRA SEVERSON  
DENNIS SHAW  
TOM SHILL  
CHARLES SINCLAIR



WYMAN SIVER  
LARRY SKINNER  
PAT SKEMAN  
JANIS SLOAN  
AMBER SMITH



CHERYL SMITH  
JOANNE SMITH  
LEONARD SMITH  
PAT SOLHEIM  
JOE SOMMARS



RUTH SORENSON  
BOYD SPENCER  
STEVE SPENCER  
KEN STACY  
ELIZABETH STARKS

JIM STARLIN  
JANICE STEMPL  
STAN STENERSON  
JIM STENTZ  
MIKE STEPHENSON

RICK STEWART  
VICKI STEWART  
DUANE STILES  
JERRY STONEHOCKER  
DENNIS STORKSON

DENNIS STRANBERG  
NALDA STRUSSI  
JIM SWARTZ  
TERRY SWENHAUGEN  
TOM TAUSCHER

## *Juniors*

JOHN TAYLOR  
ROD TAYLOR  
CHERYL THOMAS  
DEL THOMPSON  
MIKE TIRK

DAVIS TOOTHMAN  
LOREN TONEY  
KATHY TUCKER  
CONNIE TURNER  
RON TURNER

JIM TUSANT  
JOHN TUSANT  
JIM VanGILDER  
PAT VANWERT  
DUANE VASICEK

ARLEY VEE  
BILL VENS  
JOHN VENTERS  
KARON VENTERS  
BARBARA VINCENT

GARY VREDENBURG  
JANICE WAGNER  
PAT WAGNER  
DAVID WAKELEY  
TED WALDO





DICK WALLING  
 MIKE WALSH  
 JOHN WARD  
 GARY WARNER  
 BOB WATKINS



LARRY WATSON  
 TIM WEBSTER  
 DAN WEIS  
 KENNETH WENDT  
 CAROL WEST



JACK WEST  
 VERN WHEELER  
 CAROL WILLIAMS  
 MIKE WILLIAMS  
 PAT WILLIAMS



GERALD WILSON  
 JIM WILSON  
 MIKE WILSON  
 MYRNA WINKLE  
 DAVID WISE



## *Juniors*



ELTON WOOD  
 MARY WOOD  
 ROY WOOD  
 SANDY WOODS  
 CONNIE WORTHINGTON

TRUDY YARBROUGH  
 LEROY ZIMMERMAN  
 JIM ZODROW

## *Autographs*





Jerry Adoms	Bonnie Ader	Dick Agmon	Greg Allen	Ross Amon	Michael Amtoft	Borrry Anderson
Cheryl Anderson	Eric Anderson	Gregory Anderson	Sheryl Anderson	Tom Anderson	Carol Applington	Glorio Archibold
Joonne Armstrong	Ido Arnold	Lorry Arnold	Pot Ayler	Dick Badicke	Joy Boldwin	Don Barnord
Joekie Bornes	Vicki Bornes	Jerry Boss	Betty Beol	Dole Beoudreou	Joe Beck	Vince Beck

## Sophomores

Bob Becker	Mike Beer	John Beitey	Clint Belyeo	Judy Bemis	Peggy Bentz	Julie Berg
Cliff Berry	Guy Berry	Betty Bingham	Dennis Birkland	Duone Bjork	Donno Block	Sue Block
Bob Blongeres	Corleen Bliesner	Kothy Bollinger	Lindo Bonner	Betty Boormon	Jerry Baot	Morcee Borses
Judy Boschee	Judy Botteen	Gory Bottler	Penny Boulton	Arlene Bowen	Shirley Bowers	Tom Boyd







Pegi Boyer	Bab Braum	Calleen Briggs	Janice Braokmon	Glaria Brooks	Linda Brookshire	Pat Bravillette
Dana Brawn	Linda Brown	Vannie Brawn	Calleen Brawning	Pat Brumbaugh	Patti Buchanon	Dale Buck
Gary Burchill	Mona Lee Burger	Judy Burgess	Jonet Bury	Dovid Burnes	Steve Cody	Mike Cahill
Linda Compbell	Vickie Cann	Dave Carlson	Jim Carlson	Req Carpenter	Tom Carpenter	Debbie Carter

## Sophomores

Ronda Chaffins	Barbara Charvat	Randy Childress	Dove Christie	Kathy Christopher	Jon Ciesielski	Jae Ciesielski
Bill Clork	Don Clark	Sherrilyn Clork	Linda Clarke	Al Clemens	Storr Cline	Danna Clae
Verline Coddington	Gary Caffield	Pat Cagley	Mike Collier	Barbara Caan	Linda Caaper	Patsy Caaper
Tom Coppack	Ellen Cornelius	Barbaro Carp	Beverly Cattrell	Phillip Crobb	Larry Cress	Mike Cromer





Jim Case  
Darlene Cyr  
Ray Davis  
Terry Devine

Barbara Catlaw  
Danna Cyr  
Paula Deitrich  
Patsy Dibble

Dan Cecil  
Candy Dahl  
Larry DeLang  
Rich Dixan

Linda Crooks  
Malcolm Daily  
Skip DeLazier  
Trudy Dickens

Dan Culwell  
Dan Danner  
Susan DeMulling  
Charles Dickey

Richard Cunningham  
Barbara Davidson  
Yvonne DePanty  
Dan Dimica

Bev Cusick  
Carl Davis  
Dick Detrick  
Richard Dixan

## Sophomores

Kathleen Dabbins  
Mike Dutt  
Ray Eickmeyer  
Linda Fairburn

Mike Dalan  
Terry Dymack  
Barbara Ellis  
Shirley Ferrara

John Daree  
Larry Eagan  
Shirley Emerick  
Nancy Fettes

Linda Douglas  
Allan Eckerdt  
Vickie Emery  
Judy Fields

Linda Drake  
Janice Edwards  
Sue Ann Estes  
Iris Finstad

Peggy Dry  
Diane Edwards  
Pat Evans  
Jackie Fisher

Leslie Dunwoadie  
Patsy Edwards  
Karen Fair  
Sharon Fluvatt







John Ford  
Diane Gardner  
Susan Gorton  
Pat Green

Patti Foster  
Delores Gatlin  
Barbara Grube  
Jerry Grier

Sharon Foster  
Carole Geffre  
Marie Graham  
Sheryl Grover

Milah Frahm  
Clydena Gibbs  
Sue Graham  
Dennis Griffin

Linda Franz  
Aleto Gibson  
Allan Grant  
Lynette Gunning

Pam Frink  
Barbara Glubrecht  
Alan Green  
Jeff Guay

Gloria Funk  
Rob Goblick  
Alan Green  
Colleen Guttromson

## Sophomores

David Hammond  
Sandra Hoose  
Dennis Healy  
Janet Higby

Lonce Honey  
Carol Haralson  
Ron Heagy  
Barbara Hillock

Larry Hankel  
Michael Harmon  
Jesse Heinlen  
Dennis Hilsabeck

Paulette Hann  
Terrie Harvey  
Robert Hermanson  
Kay Hagle

Donna Hansen  
Kay Hattenburg  
Robert Herrington  
Charles Holley

Carla Hanson  
Judy Hayward  
Mike Hiatt  
Rod Holmes

Steve Hanson  
David Heagy  
Lonnie Hicks  
Pat Hovlett





Carol Hudson	Robert Hughes	Steve Hughes	Jonel Hume	Jim Hume	John Hunt	Roger Hutcheson
Wayne Ingrohom	Pat Irving	Steve Isitt	Korlene Jacobs	Richard Janich	Bill Jenkins	Patti Jenkins
Shirley Jeske	John Jewell	Borboro Johnson	Cheryl Jonsson	Cloyton Johnson	David Johnson	Steve Johnson
Andreo Johnston	Donny Jones	Jon Jones	John Jones	Pat Jones	Wayne Jorgensen	Linda Joyce

## Sophomores

John Julion	Steve Jurey	Jon Juul	Susan Koczor	Helen Kalber	Eloine Kamrud	Bonnie Konnberg
Robert Kosso	Melvin Keating	Patsy Keck	Fred Kelp	Rolph Kennedy	Don Kent	Judy Kenworthy
Dennis Kimball	John King	Pat Kirby	Jerry Kirschke	Corol Kittelstved	Jenielle Kline	Merilyn Knight
Ken Knudtson	Morionne Koch	Sondro Koerper	Russell Kooistro	Rich LaFountain	Jim Lokin	Borboro Londry







Gene Langlais	Dorlette Langston	Bab Lantz	Gayle Larsen	Dan Lawson	Cheryl Lee	David LeVan
Mike Lewis	Tim Lewis	Ken Lien	Bob Linahan	Ken Lloyd	Daug Lofgren	Kathy Lagsdon
Bob Long	Inez Lorenz	Julie Louden	Duane Love	Wayne Lykins	Joyce McCauley	Larry McCauley
Sharri McClure	Larry McCormack	Larry McCracken	Ran McDonald	Sanja McDannell	Mike McDawall	Alberta McGhee

## Sophomores

Mark McGowan	Mary McIver	Gary McKinney	Danley McMackin	Sheryl McRae	Terry McRae	Willy Macamber
Ran Modler	Bette Madren	Solly Manchester	Danny Marden	Nancy Marlett	Sarah Paulsson	Carol Paxtan
Mike Payne	Diane Pearson	Louise Pease	Richard Pease	Betty Pendell	Rick Perry	Irene Petersen
Ran Pettell	Pete Phillips	Pay Phillips	Carol Pluid	Mary Paland	Cindy Past	Margaret Patter





Diana Marlette  
Sue Mead  
Karen Miller  
Sharan Murphy

Camille Martin  
Steve Melville  
Kurt Miller  
Mally Mutta

Gayle Martin  
Dan Merkle  
Mike Miller  
Elaine Neilsen

Kathy Martin  
Danny Merrill  
Rich Miller  
Shirley Nelms

Dan Mason  
Leigh Mickelson  
Ran Miller  
Julene Neil

Larry Mather  
Dan Miller  
Judy Milliken  
Jim Nelsen

Susie Matlack  
Evelyn Miller  
Terry Milliken  
Lana Neubauer

## Sophomores

Terry Milliken  
Sharan Newell  
Mike Nutt  
Karl Okert

Margaret Mantgamery  
Greg Newman  
Glenna Oakes  
Juanita Olsen

Bob Mareau  
Dennis Niemeyer  
Gwen Ochs  
Larry Olsen

Linda Marris  
Jim Nae  
Victor Ogle  
Cannie Olson

Kathy Marrison  
Charlene Narby  
Lynn Oien  
Danna Olson

Karen Marton  
Rich Narthcutt  
Sandy Oien  
Rick O'Neil

Ken Masher  
Stephen Naves  
Anita Odert  
Craig Orchard







Jae Picicci  
Rickey Price  
Lue Rousch  
Koy Reisdorph

John Pivar  
Pat Priddy  
Ted Rouscher  
Bruce Kenfro

Brooke Plostino  
Bill Robe  
Jim Rowson  
Carol Rennich

John Plotz  
Diona Rojewski  
Lorraine Roymond  
David Ricco

Jeanine Patvin  
Jay Rondolph  
Pam Reddy  
Pot Richardson

Rich Potvin  
Jerry Rasmussen  
Rickey Reidt  
Evelyn Richord

Pot Priddy  
Connie Rost  
Sondro Reilly  
Phill Rittgorn

## Sophomores

Vicki Rizzo  
Cheryl Roy  
Mike Schedine  
Virginio Seipp

Linda Roberts  
Rondy Royer  
Vicki Schmidt  
Cloudio Sevier

Donno Robertson  
Jim Rudolph  
Linda Schrock  
Glorio Sherman

Chris Roethle  
Ron Russell  
Moy Schudel  
Dove Shill

Tim Roethle  
Connie Sorto  
Kothy Scott  
Linda Shoff

Tom Rose  
Pam Savage  
Bab Sebero  
Tom Shores

Mike Rowe  
Mary Sawyer  
Duone Seifert  
Jim Short





Larry Shart  
Linda Sorenson  
Dan Stall  
Phyl Steinberg

Danna Sinnatt  
Janice Sarlien  
Diana Stanley  
Dixie Stempel

Allan Smith  
Ran Sautherly  
Linda Stannard  
Marja Stine

Gary Smith  
Sherry Speller  
Gene Steadman  
Karen Stillwell

Gloria Smith  
Betty Spencer  
Bab St. Clair  
Jim Stipple

Kathy Smith  
Greg Staab  
Cheryl Stensma  
Mike Stalz

Reita Smith  
Cheryl Stacy  
Jael Stensan  
Ray Staakey

## Sophomores

Jim Stasburg  
Pattie Swatman  
Wayne Teler  
Duane Thompson

Dorothy Stavall  
Mike Sweeney  
Jeannie Thiemens  
Jim Thraap

Sharan Stramgren  
Gregg Swell  
Dyann Tirk  
Lance Tibbett

Ray Studabaker  
Dennis Sykes  
Linda Thiry  
Charlene Taland

Bruce Stultz  
Jahn Tarter  
Vickie Thae  
Kathleen Trainar

Jennifer Sutherland  
Susan Tate  
Chavera Thomas  
Cheryl Threvithick

Allen Swanson  
Bill Terman  
Tam Thomas  
Danna Triplett







Ron Turner  
Val Viers  
June Warner  
Linda Webster

Alice Turnidge  
Vickie Vaag  
Wendy Warner  
Pay Welling

Ray Uecker  
Jerry Varby  
Gary Warren  
Davie Weller

Sherry Van Sickle  
Gloria Wageman  
Keith Warren  
Skip Wendt

Darlene Van Slyke  
Gary Waldahl  
Mike Waterbly  
Sue Wendt

Sue Van Voorhis  
Alan Walker  
Dick Webber  
Jackie Wentz

Greg Vercruysse  
David Walker  
Garrell Weber  
Larry Wernecke

## Sophomores

Donita Wharton  
Shirley Williams  
Eddy Waad  
Penny Ziegler

Herb Wheeldon  
Allen Wilson  
Bob Waad  
John Zentz

Ken Whipple  
Judy Wilson  
Linda Waalen

Grace White  
Diana Wimmer  
Linda Workman

Barbara Wihstruck  
Diane Wallin  
Dick Young

Gordon Wildman  
Janis Witty  
Roberta Young

Sharon Williams  
Dixie Wittkopf  
Rosalee Zingale





Judy Ahlstrand  
Daug Anderson  
Jahn Arvesen  
Bob Bennett

Phillip Aikman  
Elsa Anderson  
Theresa Anderson  
Judy Benninger

Cheryl Albrecht  
Harald Anderson  
Terrie Babbitt  
Janis Bliesner

Jim Allen  
Ray Angel  
Elaine Baump  
Lois Bauck

Alice Anderson  
Dan Anselma  
Bill Barr  
Bill Brady

Bob Anderson  
Nick Appa  
Bob Beck  
Jack Bront

Chris Anderson  
Jeff Armstrong  
Barbara Bellefeuille  
Janet Bracks

## *Freshmen*

Pat Browne  
Garry Carlson  
Larry Calletta  
Janell Denman

Bob Burger  
Keith Carlson  
Caral Craig  
Linda Dietrich

Stewart Burkhardt  
Tim Chacon  
Daryl Cram  
Dally Dravahl

Bob Busche  
Tom Charbanneau  
Wayne Cullisan  
David Dunwaadie

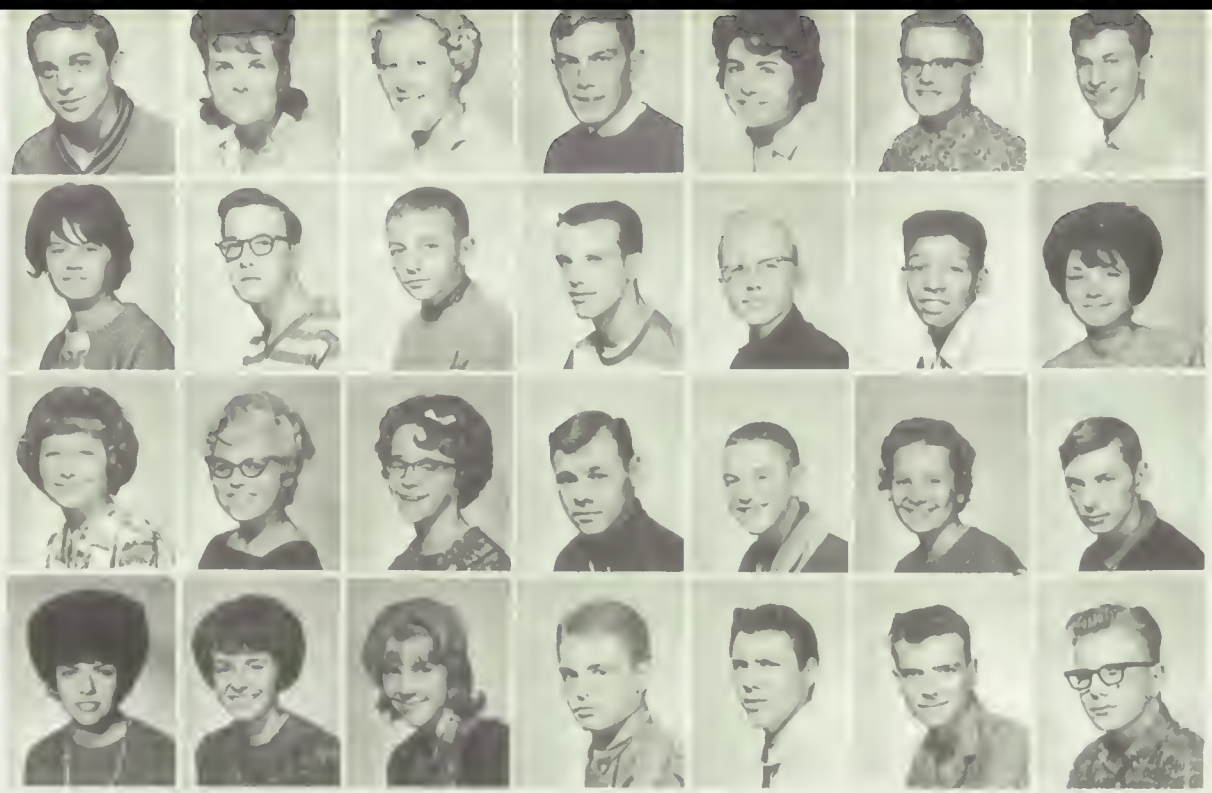
Sandra Butt  
Ken Circle  
Mary Ja Davis  
Terry Ekenhaver

Wayne Cantley  
Larry Caffield  
Danna Dawson  
Judy Ellis

Cameron Capehart  
Jim Cale  
Dan DeMulling  
Dennis Elverum







Bruce Erdman  
Judy Garland  
Gloria Gust  
Kathy Harrington

Sally Emely  
Earl Garrison  
Betti Haeger  
Pat Hostings

Donna Fitzpatrick  
Del George  
Joni Hake  
Sherry Houge

Bill Frederick  
Bill Ghan  
Dick Halligan  
Fred Hoynes

Danna Fredrickson  
Leonard Glaser  
Dana Halvarson  
Dan Hehmon

Gerry Frye  
Floyd Glover  
Janette Hann  
Dick Herriman

George Galloway  
Virginia Grace  
Jim Harman  
Dovid Holindo

## Freshmen

Jay Holt  
Marshall Jewell  
Frank Kaesemeyer  
Gloria Lambert

Connie Hudson  
Barbara Johnson  
Gwen Kelley  
Bill Langford

Perry Hudson  
Jay Johnson  
Bill Kennedy  
Corla LaTurner

Cady Hurst  
Dennis Jones  
Dianna Kleeman  
Dan Lee

David Imus  
Gary Jones  
Lannie Krebs  
Pat Libby

Larry Jamerson  
Bill Jones  
Pam Kroos  
Marla Lackhart

Linda Jefferson  
Kathy Jones  
Gerry Kuder  
John Ludwig





Rager Lundberg	Mary Lynn McDonald	Marlene McGee	Linda McLead	Lindsey Mahar	Vernan Mahler	Mike Mahaney
Terry Marden	Judy Martella	Theodore Marlet	Paula Mead	Ross Milliken	Pat Mitchell	Paula Maslaf
Terry Mullen	Barbara Munn	Jahn Murcar	Al Naccarata	Nancy Nelsen	Charlene Neuman	Dan Nickersar
Marjarie Nickersar	Sally Nichalsan	Bobby Nutt	Kendra Olsen	Bab Ortega	Melvin Palanuik	Tam Pearce

## *Freshmen*

Gerry Perkins	Larann Pfefferkorn	Susan Porteous	Mike Ramsvig	Howard Rausch	Linda Rauscher	Linda Remmick
Arlie Reyersan	Sheila Richings	Wayne Rikerd	Dan Rittenhause	Gene Rittgarn	Mike Robinsan	Vickie Robisan
Linda Rase	Jim Rath	Bob Runyan	Janice Sarta	Bonnie Schutz	Sandra Scagnamiglic	Vickie Scott
Greg Shannan	Ken Sharvin	Dennis Shea	Ann Simer	Vent Simonson	Ardyce Slater	Bab Salberg







Sheryl Southwell  
Ken Strong  
Emily Tote  
Susan Van Belle

Ken Sproy  
David Stumph  
Nick Teagarden  
John Von Voorhis

Tom Storks  
Lorry Swon  
Anita Tester  
Steve Venziono

Dionne Stern  
Kathy Swanson  
Steve Toland  
Del Wagner

Morvin Steury  
Morlene Swett  
Steve Trout  
Sondy Wohl

Arthur Stevens  
Beverly Swilling  
Pat Turski  
Don Wokenight

Jim Strond  
Rebecca Syring  
Chorlene Updike  
Harold Wesson

## *Freshmen*

Bev White

Maxine Widger

Rick Wilcox

George Williams Jeonette Williamson Jerry Wilson

Mike Zorn





Theresa Auer	Philip Aukman	Earline Baker	Maureema Billigmeir	Carol Bleisner	Carol Bloomfield	Jahn Bond
Judi Bargardt	Judy Botteen	John Bottjer	Bonnie Bretthouer	Linda Brookshire	Diane Brown	Dick Brown
Colleen Browning	Juonito Bryont	Bab Burger	Judy Burgess	Dove Buswell	Lynda Corgill	Don Cate
Pam Carlson	Pat Carney	Borbara Callow	Bab Christersan	Linda Colwell	Jim Connars	Larry Cotter

Coral Craig	Janet Danelson	Suson Doru	Lee Dovidsky	Faye Davis	Donna Dawson	Ianell Denmon
Steve Denmon	Mory Derr	June Dilley	Linda Douglos	Larry Downing	Sherry Drake	Sharon Dry
Rick Elder	Annette Elioson	Pat Fisk	Sharon Foster	Glenda Ford	Gerrila Fountain	Diane Gardner
Clydeno Gibbs	Rene' Gierke	Bannie Gilbrech	Marie Graham	Janet Groce	Lindo Gust	Linda Henderson







Dick Hill  
Lauise Jahnsan  
Lynn Mahar  
Paula Mead

Sharon Hill  
Ralph Jones  
Vernan Mahler  
Art Miller

Jeanne Holst  
Jody Jury  
Sandi Marchioro  
Lynn Miller

Angi Hurd  
Kitty Kelly  
Diana Marlette  
Bob Mareau

Jae Hurst  
Terry Kenworthy  
Nancy Marsh  
Glen Mayer

Linda Jefferson  
Cheryl Langford  
Kathy Martin  
Jae Mulkey

Barbara Jahnsan  
'na Lorenz  
Richard Mathusm  
Eileen Murphy

Al Naccarato  
Jill Owsley  
Larann Pfefferkorn  
Jerry Rasmussen

Jim Nielson  
Valdyne Parkins  
Larry Phillips  
Terry Reed

Gary Newbauer  
Esther Patterson  
Sue Phillips  
Ron Rummick

Ellen Newcomb  
Mike Patton  
Bruce Plewman  
Floyd Richardstone

Gail Ostness  
Nancy Perry  
Bob Race  
Charles Sinclair

Chris Oster  
Tam Pawlawski  
Cannie Prince  
Paul Scagnamiglia

George Oens  
Carol Pavel  
Maurene Prevost  
Eddie Robinson





Janice Sirful  
Frank Stevens  
Ricki Watt

Richard Snyder  
Rich Strassburg  
Don Welch

Alon Smith  
Rich Sundahl  
Kathi Wellke

David Smith  
Tom Summers  
Cheryl White

Ruth Sorenson  
Mike Troinor  
Ken Whipple

John Staa  
Charlene Updike  
Maxine Widger

Luke Stondley  
Tam Von Brimbergen  
Rick Wriker

# Autographs





# Local-Motive

## Activities and Clubs



Chuggin' Along



A. S. B. OFFICERS—Don Gibson, President, Jackie Johnson, Treasurer, Butch Bircumshaw, Vice-President, and Diane Deahl, Secretary, look forward to their experiences as Rogers' leaders.

*Fall*

*A.S.B.*



FALL A. S. B. CHAIRMEN—row 1: Judy Miller, Lynne Mertes, Karen Johnson, Jean Merewether, Ann Hegg. row 2: Steve Coon, Milaine Lake, Charlene Heisler, Carol Pugh.

FALL A. S. B. REPRESENTATIVES (Not in order) D. Jones, S. McGinnis, J. Merewether, S. Botteen, G. Bottler, E. Ferrell, J. Hanson, S. Coan, C. Gulttramsan, D. Carter, R. Stookey, E. Miller, V. Emery, R. O'Neal, V. Wheeler, P. Janni, P. Hastings, C. Morris, E. Wood, L. Patrick, R. Robinsan, G. Margan, N. Chevigny, E. Fox, B. Ghan, G. Lindgren, K. Tucker, R. Zingole, C. Kittlested, D. Stemple, I. Boling, L. Scates, P. Aukman, D. Hammand, J. Ellis, P. Hargrave, C. Cress, R. Snyder, A. Churma, F. Brown, L. McCracken, S. Updike, K. Simonsan, J. Rondaloph, T. Hottman, B. Pearson, E. Henry, M. Beer, J. Lindow, R. Elliott, T. Tauscher, D. Hanson, A. Jiminez, M. Collier, B. Davis, M. Prevost.







The cat and the mice were only a few of Characters in the Frosh Con.

OUCH! The Pirates really killed those Bullpups at the Homecoming game.

AND NOW SIR — "Reporter" Nancy Bush Questions the "Star" Perry Dixon before the big game.

A.S.B. President Don Gibson and Peggy Reedy show the Safe-Driving Banner which the Rogers SAFE DRIVERS received.

6-0 Rogers downed N. C. in the first football game of the season.



MINUTES 0:00 SECONDS

ROGERS 06 N.C. 00

4 DOWN 7 YDS. TO GO 4 QTR

Thirst knows no season...

GIRLS' LEAGUE CHAIRMEN: Row 1. Kerry Green, Dolly Rantanen, Sharon Munson, Evelyn Ferrell, Gladys Nordby, Lynda Gorman. Row 2. Sue Butt, Lynn Martin, Roberta Barr, Connie Curner, Jill Laken, Lou Ann New, Jennifer Gent, JoAnn Hanson. Row 3. Dione Stewart, Jean Merewether, Kathi Sherman, Karen Johnson, Salinda Babbitt, Sandy McGinnis.



PRESIDENT  
Judy Ludwig



VICE PRESIDENT  
Phylis Stultz

*Fall*  
*Girls'*



GIRLS LEAGUE REPRESENTATIVES: Row 1. Sandy Paffumi, Doris Holmes, Carole Pugh, Linda Fairburn, Carol Pavel. Row 2. Marie Louie, Michele Ricketts, Sherrilyn Clark, Evelyn Ferrel, Janice Fullmer, Karen Morton, Chris Anderson. Row 3. Cheryl Caird, Judy Botteen, Sharon Larson, Carole-jean Schaefer, Pat Mitchell.





Here is Harriet Templeton making one of her marvelous speeches at a Girls' League meeting.



SECRETARY  
Jan Marquardt



TREASURER  
Nancy Fisher

*League*

Lou Ann New was presented at our first Girls' League meeting last fall. She was Chairman of the Trophy Case.





SECRETARY  
Rick Wheeler

TREASURER  
Jess Teats

PRESIDENT  
Arvid Anderson

VICE-PRESIDENT  
Rich Tucker

## *Fall Boys' Federation*



BOYS' FEDERATION CHAIRMEN: Row 1, Ted Waldo, Larry Skinner, Vern Wheeler, Bob Aldrich, Larry Benzel, Jim Burnette, Steve Coon. Row 2, Bill Kenworthy, Rich Sands, Gene Babcock, Brad Anderson, Royce Snyder, Fred Brown.



BOYS' FEDERATION REPRESENTATIVES: Row 1. Chris Oster, Joe Ciesielski, Larry Cazzetto, Jim Roth, Steve Traut, Rich Sand. Row 2. Larry Wehr, Ron Goblick, Jerry Adams.





MR. WARREN MORGAN, Assistant Superintendent of School District 81, tells the boys about his recent trip to Russia.



LOOKS GOOD! These mothers and sons seem to be enjoying themselves at the Mother and Son Banquet.



## HOMECOMING QUEEN

JUDY MILLER

## *Home-Coming*

### HOMECOMING ROYALTY

Freshman Princess—Nancy Nelson  
 Sophomore Princess—Rene' Gierke  
 Junior Princess—Janet Groce  
 QUEEN—Judy Miller  
 Senior Princess—Arlene Hines







Many homerooms and clubs exhibited displays during Home-Coming week. Two of the prize winners were the displays of homeroom 132 and the Distributive Education Club.

**ROGERS MUST BE WINNING!!!**  
The cheerleaders seem very happy about something, don't they?

**IS SOMETHING FUNNY GIRLS?**  
They seem to be enjoying themselves at one of the football cons.



### **Autumn Leaves**

Everyone in their bright wools turned out for the first date dance of the year.



Denny Foland and Janice Stempel were two of the "better-dressed" couples at the Sadie Hawkins Dance.

### **Sadie Hawkins**

All Dogpatchers showed up for the dance in their best bib and tucker.



### **Winter Wonderland**

All was well at our winter dance except one thing — no snow!





"COME RAIN, COME SHIINE." The play cast did a tremendous job on this year's all-school play.



THESPIAN OFFICERS — Peggy Oaks, Phyllis Stultz, Jay Olsen, and Dan Ripley, seem to be listening intently to someone.



WOMEN! Jim Brown doesn't look very happy about what Jeannie Theimens and Jack'e Massender are saying.

ROBIN HOOD. Some of the cast are Dave Wilson, Phyllis Stultz, Dan Ripley, Jim Brown, and Mike Nutt.





IS THE FOOD GOOD? All the boys seem real hungry, don't they?



LOOK AT THE LIVELY CHEERLEADERS — They presented this skit before one of our football games.



Jackie Johnson, Diane Deahl, Mr. MacGown, and Pat Jones are shown with some of the food and toys donated to the needy family.



DIANE DEAHL, A. S. B. Secretary, is surrounded by all the food the students donated for the needy family at Christmastime.





**GIRLS' LEAGUE MEETING:** At this first meeting of the year, the Girls' League Fall Chairmen were introduced to all the girls. Afterwards a song fest was held and the girls had a chance to prove their singing ability.



**LAST DAY OF OFFICE.** The officers pose under the rainbow during the Girls' League Installation Con.



Steve Coon and Marilyn Hastings are debating about buying a "Little Buc."



**LOOK AT JAY!** Here are some of the "Come Rain, Come Shine" play cast.



Row 1: Phyllis Gilmore, Prosalie Zingale, Pat Garnsey, Sally Bennett, Mickelle Ricketts, Dixie Stemple, Angie Jiminez, Trudy Houger, Billie Leeson, Carol Bloomfield, Louise Kassen. Row 2: Sharon Nickols, Shari Carlson, Patti Jenkins, Marjory Crowe, Evelyn Ferrel, Geraldine La Fountain, Paula Deitrick, Sandy Galloway, Linda Salberg, Vickie Stewart, Carol West, Sandra Oien. Row 3: Gene Johnson, Paul Scognamiglio, Dan Bowerman, Mike Cromer, Dana Halvorsen, Jim Vasahlo, Ron Froman, Sam Smith, Rick Wriker. Row 4: Everett Hanson, Bruce Renfro, Larry Hinton, Richard Janish, Jim Nelson, Mike Williams, Dave Carlson, Eric Anderson, Bill Ghan, Larry Elverum.

## CHOIR

Row 1: Sandy Wahl, Jill Owsley, Patty Opsal, Shirley Nelms, Diana Marlette, Hazel Swim, Darlene Vanslyke, Pat Well- ing, Cheryl Roy, Karon Marengo, Pam Carlson, Loretta Yates, Molly Muto, Judy Redmond, Sharon Masterson, Jennifer Sutherland. Row 2: Corinne Jolgen, Vicki Scott, Sandy Scognamiglio, Patsy Mize, Cheryl Soter, Pat Cogley, Linda Mc- Cloud, Susan Porteous, Aneta Tester, Alice Anderson, Elane Neilson, Carol Bliesner, Dee House, Judy Bogarts, Diane Stanley, Judy Ahlstrand, Dolly Droudahl. Row 3: June Dilley, Kathy Imholt, Glenna Oakes, Linda Thirey, Trudy Dickens, Naomi Geer, Betty Bowlley, Nancy Perry, Jannet Brooks, Linda Webster, Dyann Tirk, Mary Stanley, Ilene Peterson, Judy Glubrecht, Marlane Swett. Row 4: Arlie Ryerson, Margaret Seabrant, Chris Anderson, Clydena Gibbs, Lois Miver, Darlene Cyr, Sue Dauthett, Charlotte Eldred, Lynn Miller, Beverly Cusick, Nancy Nelson, Sharon O'Neel, Donna Gali- peau, Kathy Westover, Linda Shrock, Louise Fabunan.







Row 1: Dione Stewart, Carol Nugent, Karen Johnson, Yvette Davenport, Carol Conner, Lueann Rausch, Pat Nyreen, Carol Williams, Jean Luke, Karen Morton, Jody Jury, Marie Louie. Row 2: Judy Botteen, Lorna Clothier, Diana Kruger, Jackie Carter, Donna Partridge, Gayle Larson, Lorraine Brooks, Carol Johnson, Darlette Langston, Barbara McBride, Starr Cline, Sharon Larson. Row 3: Al Walker, Al Coumont, Pat Vanwert, Herb Wheeldon, Rex Oliver, Gary Gibbs, John Tusan, Dennis Storkson, Brook Plastino. Row 4: Larry Arnold, Don Merkle, Dick Carr, Terry Milliken, Jim Tusan, Terry Blue, Phil Crabb, Bob Kassa, Ken Circle.

## CHOIR

GIRLS' CHORUS—Row 1: Sally Burnette, Karin Johanson, Karen Laveridge, Kathy Trainor, Sharon Roller, Janet Hake, Sharon Kelly, Beverly Bailey, Maxine Widger, Linda Fairburn, Terry Kenworthy, Janice Wagner, Kitty Kelly, Margie Schultz, Angela Hurd, Linda Brookshire, Earline Baker, Pat Meek, Shirley Anderson, Jonell Denman. Row 2: Linda Gamby, Janis Bliesner, Barbaro Bawlgier, Margaret Mantgamery, Nancy Schmaulz, Sherry Drake, Trudy Yarbrough, Carmita Carver, Linda Workman, Charlene Nordby, Charlene Taland, Cynthia Anderson, Barbara Bellfeulle, Diana Anderson, Janet Higby, Gloria Smith, Vickie Thoe. Row 3: Rose Rutherford, Darlene Breeden, Coral Ann Applington, Rene' Gierke, Sharon Stramgren, Pat Dibble, Nancy Marlett, Marie Kinkade, Katie Sanford, Linda Douglas, Carol Cheramy, Ardyce Slater, Arlene Bawen, Linda Rose, Kathy Harrington, Beverly White, Sheryl Southwell, Annette Eliason, Diana Durfee, Pam Kraus.





BOYS' QUARTET: top row: Paul Scognamiglio, Gene Johnson; row two: Terry Blue, Larry Hinton; row three: Phil Steckmen, Patricia Libey, Dick Carr; row four: Gary Gibbs, Al Coumont.



ALL-NORTHWEST CHORUS MEMBERS: row 1: Sally Bennett, Pat Garnsey, Evelyn Ferrel, Diana Kruger; row 2: Larry Hinton, Sam Smith, Dick Carr, Pat Vanwert.







TRIPLE TRIO accompanist Joyce Baldwin, Jackie Carter, Diana Kruger, Dione Stewart, Vickie Stewart, Sharon Larson, Michelle Ricketts, Trudy Houger, Sally Bennett, and Pat Garnsey.

ALL-NORTHWEST BAND AND ORCHESTRA MEMBERS: Larry Lambert, Ken Winkle, Jean Merewether, and Art Chmura.



# T. C. STAFF



EDITOR  
Dione Stewart



SPORTS EDITOR  
Dave Halsted



ASSOCIATE and ACTIVITIES EDITOR  
Mary Ann Miller



FACULTY EDITOR  
Joanne Gibson



Kay Hogle.



SENIORS EDITOR  
Kathy Sherman



CLASS EDITOR  
Milaine Lake



CLUBS EDITOR  
Karen Johnson





ADVISER  
Mr. Ormsby



BUSINESS MANAGER  
Marvin Jack



ACTIVITIES  
Kerry Green



Sue VanVoorhis

Joanne Mantkus,



SENIORS  
Rosie Atkinson



COVER DESIGNER  
Cherryl Dinsmore

op T. C. Seller, Larry Skinner



CLASS  
Marcia Lookabaugh



SPORTS  
Al Walker

# SPRING A. S. B.



VICE-PRESIDENT  
Rich Sand



SECRETARY  
Sally Bennett



PRESIDENT  
Sam Smith

TREASURER  
Dione Stewart



A. S. B. CHAIRMEN—row 1: Marilyn Hastings, Bobbie Helland, Nancy Fisher, Sue Batteen, Jenifer Gent. REPRESENTATIVES—row 2: Jay Johnson, Al Naccorato, Jay Randolph, Jackie Massend, Lynn Martin.

SPRING A. S. B. REPRESENTATIVES (Not in order) D. Jones, J. Mossenger, L. Martin, J. Suksdorf, D. Buck, P. Gilmore, S. Galloway, D. Holstead, R. Gierke, B. Charvat, R. Southerly, S. Oien, P. Dietrich, J. Parry, V. Wheeler, L. Hoffman, M. Lackhart, C. Elder, G. Warren, J. Woolen, V. Scott, G. Margan, C. Christenson, D. Byrum, J. Johnson, G. Lindgren, K. Venters, A. Aurnidge, C. Langford, V. Seipp, C. Corter, L. Skinner, J. Schroyer, L. Cazzetta, D. Hammond, S. Nicholson, C. Halcomb, J. Carter, R. Snyder, A. Churmo, F. Brown, L. Mather, A. Naccorato, J. Randolph, G. Johnson, B. Pearson, T. Hays, M. Beer, J. Lindow, C. Gladhort, T. Tauscher, R. Hass, M. Jones, L. Cress, S. Connor, E. Rickard.







SERIOUS AREN'T THEY? Dione, Rich, and Sam are waiting to be introduced at the Inaugural Ball.



Everyone seems to be having a good time at the dance. Did you?

BUTCH BIRCUMSHAW AND JACKIE JOHNSON were chosen as King and Queen of the Sweetheart Dance. Runners-up were Judy Miller and Sam Smith.



RON O'NEEL impressed the students and faculty with the fabulous speech he made at the A. S. B. Introduction Con.





*Spring*

*Girls'*

SPRING GIRLS' LEAGUE CHAIRMEN—row 1: Janice Stempel, Sue Butt, Connie Rose, Kerry Green, Dolly Rantanen, Gladys Nordby, Karin Johanson. row 2: Lynn Martin, Lou Ann New, Sharon Larson, Diana Kruger, Susan Botteen, Jennifer Gent, Lynda Gorman, Barb Hankel. row 3: Charlene Heisler, Carole Pugh, Karon Morton, Janet Schroyer, Pat Gosk, Sandy Galloway.

PRESIDENT  
Karen Johnson



VICE-PRESIDENT  
Jean Merewether



GIRLS LEAGUE SPRING REP. row 1: Mary Ann Miller, Carol Nugent, Kerry Green, Janet Hagenson. row 2: Rene Gurke, Karen Burrill, Aleta Gibson, Linda Webster, Janet Bury.



# League



Don't they look happy checking over the Girls' League point cards? They must have all their pins!

SECRETARY  
Joann Hanson



TREASURER  
Kathi Sherman



GOOD LOSERS is the girls' motto. Although we lost we still have a smile on our faces.

# Spring

# Boys'



PRESIDENT  
Dave Hansen



VICE-PRESIDENT  
Jess Teats



SECRETARY  
Dennis Hanson



TREASURER  
Terry Blue

SPRING BOYS' CHAIRMEN—row 1: Alan Walker, Larry Skinner, Don Shove, Arvid Anderson, Ray Stookey. row 2: Walt Pool, Steve Coon, Dave Halsted, Mike Rhodes, Bill Pearson.



How did the Boys' Fed win the penny drive if they gave their money to the Girls' League? We wonder!





# Federation Officers



MR. WALTERS awards Boys' Federation pins to Butch Bircumshaw, Rich Tucker, Arvid Anderson, and Steve Coon at the Installation Con.



MR. WALTERS is giving the boys a "pep talk" about giving all their pennies to the Boys' Federation. They must have heeded his word because the boys did win the contest.



"GIVE YOUR MONEY" to the Boys' Federation was the motto of the boys during the penny drive. They won too!



MR. MacGOWN swears in the A. S. B. officers and chairmen at the Introduction



"CASPER CAPERS"  
The Thespian Troupe sponsored this morning mixer to help send the band to the All-Northwest Conference at Casper.

GAYE MOONEY AND RON O'NEEL, two of Rogers' top debaters, seem to be discussing some real important point, don't they?



GIRLS' LEAGUE OFFICERS held a Valentine Party for the new Girls' League Chairmen.





GIRLS' LEAGUE PENNY DRIVE PROMOTERS, Jackie Johnson, Jean Hodge, Barbara Welch, Peggy Reedy, and Judy Miller, played a lively tune at the Girls' League meeting. Their purpose was to urge the girls to contribute to the Girls' League pig.



ROGERS' REVUE leading characters were Jim Brown, Dan Ripley, and Doug Gehrke, who portrayed Davy Jones, King Neptune, and Producer-Director Snootnick.



LARRY HINTON AND THE GRAND PIANO. Larry played a medley of tunes ranging from classical to pop.



PHANTOM REGIMENT Pirettes Patsy Carmack, Connie Cress, Judy Redmond, Becky Gregerson, Karen Burrill, Yvette Davenport, Jeanette Knight, and Kerry Green, performed a precision marching routine.



# ORCHESTRA

First Violins: ARTHUR CHMURA, Rick Stewart, Evelyn Miller, Kathy Olsen. Second Violins: DAVID LeVAN, Betty Boorman, Linda Henderson, Larry Wehr, Karen Olsen, David Smith. Viola: Mike Rhodes. Cello: Jean Merewether. Bass Viol: KEN WINKLE, Mike Petersen. Piano: Evelyn Martin. Flutes: Myrna Winkle, Evelyn Ferrel, Margaret Rich, Jill Owsley. Oboes: Deborah Boulton, Phylis Steinberg. Clarinets: Larry Lambert, Rich Sundahl. Bassoons: Victor Ogle, Aleta Gibson. French Horns: Dennis Rowe, Tom Woodworth, Penny Boulton. Trumpets: Mike Collier, Rich Sand. Trombones: Mike Doran, Lyle Poole, Larry Jacobs. Percussion: Tim Webster, Gary Vredenburg, Terry Reukauff. Tympani: Greg Newman.







# SYMPHONIC BAND

Flutes: EVELYN FERREL, Myrna Winkle, Jill Owsley, Margaret Rich. Oboes: Phylis Steinberg, Deborah Boulton. Bassoons: Victor Ogle, Aleta Gibson. Bb Soprano Clarinets: LARRY LAMBERT, Larry Isitt, Mary Stanley, Larry Mather, Dawn Mead, Garry Warren, Richard Sundahl, Nikki Bracken, Jerry Jones, Sue Van Voorhis, Virginia Seipp, Janice Juul, Janice Seifert, Susan Van Belle, Richard Pease. Eb Alto Clarinet: Ruth Sorenson, Barbara Johnson. Bb Bass Clarinet: VERA GRAY, Lou Ann New. Alto Saxophones: PAMELA OCHS, Jackie Massender, Terry Eisenhauer. Tenor Saxophones: Steve Davis, Elaine Kamrud. Baritone Saxophone: Sandra Reilly. Cornets and Trumpets: STEVE COON, Mike Collier, Rich Sand, Ron O'Neel, Mike Miller, Dick Detrick, Gary Burchill, Cheryl Anderson, Gary Perkins. French Horns: DENNIS ROWE, Tom Woodworth, Penny Boulton, Bruce Plewman, Mike Stephenson. Trombones: LYLE POOLE, Mike Doran, D'Arcy Murphy, Larry Jacobs, Leslie Dunwoodie, Bette Madren, Chuck Gambill. Baritone Horns: Phil Steckman, Dennis Niemeyer, Dick Webber. Tubas and Bass Viol: MIKE PETERSEN, John Rantschler, Larry Hagensen, Ken Winkle. Bass Drum: TIM WEBSTER. Snare Drum: Gary Vredenburg, Gregg Newman, John Jones, Terry McRae, Jim Noe. Cymbals: Terri Reukauff. Tympani: Karl Okert.



# RECORD

ROGERS RECORD EDITORS —  
row 1: Jo Carr, Mr. Weitz, ad-  
viser), Carol Morris. row 2: Ann  
Hegg, Gaye Mooney, Leslie Pow-  
ell.



MEMBERS—row 1: Dick Richings,  
Jim Buchanan, Karen Morton, Kar-  
en Adams. row 2: Jerry Adams,  
Louise Cheney, Pat Mikkelsen,  
Connie Worthington, Barbara  
Coon, Marita Killin, Angi Heard.  
row 3: Dave Jones, Jim Throop,  
Paul Berg, Terry Montanye, Tom  
Gamble, Mary McIver, Terry Reed,  
Ron Hatton.



## Photography

Rex Nutt

Jack Powell

Mr. Buckley  
Advisor

Jerry Van Deusen

Mick McDaniel

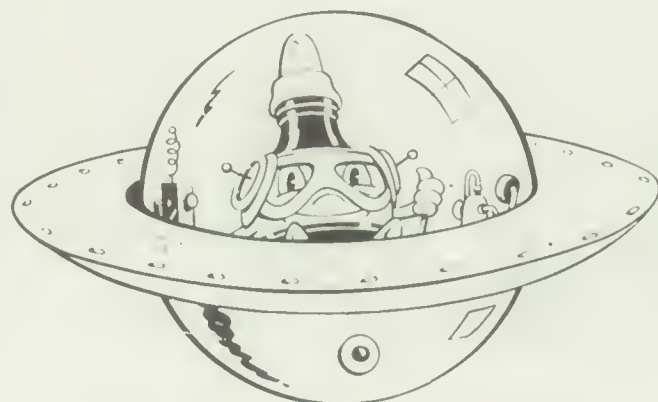
Marvin Jack





OFFICE WORKERS—row 1: Pat Garnsey, Pat Genoway, Cheryl Christensen, Charlene Heisler, Carole Pugh, Carol Nugent, Carol West, Cheryl Smith, Linda Blum. row 2: Donna Galipeau, Carolyn Olson, Donna Shields, Diane Thurston, Sharon O'Brian, Jeanne Woolen, Lynn Mertes, Margaret Seabrandt, Sandra Galloway. row 3: Rita Joyce, Lynn Martin, Judy McClure, Carol Schaefer, Margaret Young, Marcy Hays, Sharon Larson, Shirley Bacon, Judy Miller. row 4: Nancy Chevigny, Judy Hays, Judy Fockler, Darlene French.

## *Autographs*



## Senior Superlatives



### FRIENDLIEST

Jim Burnette Jean Merewether



### MOST TALENTED

Dan Ripley Phyllis Stultz



### WITTIEST

Paul Poindexter Barbara Welch



### MOST SCHOOL SPIRIT

Sam Smith Sally Bennett



### MOST ATHLETIC

Rich Tucker Barbara Hankel



### MOST STUDIOUS

Brad Anderson Linda Hoffman



### MOST SOPHISTICATED

Steve Coon Dione Stewart



### BEST FIGURE AND PHYSIQUE

Dan Thompson Lynne Mertes



### MOST POPULAR

Don Gibson Jackie Johnson



## *Senior Superlatives*



**BEST LINE**  
Ray Hass Bobbi Helland



**BEST DRESSED**  
Terry Davis Jean Hodge



**MOST LIKELY TO SUCCEED**  
Jon Thaler Judy Ludwig



**BEST LOOKING**  
Royce Snider Arlene Hines



**BEST DANCERS**  
Jim Crawford Lillian Vedvick



**BEST ALL-AROUND**  
Butch Bircumshaw Peggy Reedy

## *Autographs*



# *Autographs*





# *Autographs*





Row 1: Sharon Munson, Karen Burrel, Bonnie McAvoy, Cheryl Caird, Bonnie Anderson, Judy Redmond, Billie Leeson, Jeanette Knight, Patsy Carmack, Rosie Atkinson, Marilyn Hastings. Row 2: Marie Louie, Janice Fullmer, Connie Rose, Doris Holmes, Lynn Martin, Trudy Houger, Sandy Woods, Vicki Stewart, Mary Ann Miller, Pat Nyreen. Row 3: Darcie Gilman, Jill Lakin, Janet Groce, Karin Johnson, Becky Gregerson, Diane Deahl, Sharon Masterson, Kathy Minderman, Claudia Elder, Sandy Paffumi.

## Pirette Marching Unit

Row 1: Carol West, Gladys Nordby, Judy Parkins, Bev Milliken, Dolly Rantanen, Carol Holcomb, Kerry Green, Sandy McGinnis, Darlene Hobbs, Linda Blum. Row 2: Angie Hurd, Angie Jiminez, Yvette Davenport, Connie Cress, Sandy Oster, Mary Reinhardt, Kathi Sherman, Jan Marquardt, Carol Nugent, Carol Holcomb. Row 3: Janet Hagenson, Jo Gibson, Carol Coffman, Carol Williams, Elizabeth Starks, Roberta Barr, Loretta Persello, Karen Fry, Dorothy Ethredge, Sue Butt.







CONNIE  
TURNER

NANCY  
BUSH

NANCY  
FISHER

JUDY  
LUDWIG

JANICE  
STEMPEL

JACKIE  
JOHNSON

BOBBI  
HELLAND

DIANE  
JOIGEN

## *Cheerleaders*

### *Pirette Officers*

FALL: Kathy Sherman, Jan Marquardt.  
row 2: Diane Deahl, Diane Jolgen, Doris  
Holmes.



SPRING: Connie Rose, Connie Turner,  
Carol Williams. row 2: Diane Deahl, Audrey  
Prosser.



### MAJORETTES

FAY  
HOEGH

AUDREY  
PROSSER



### FLAGS

TRUDY HOUGER

CAROL JOHNSON

KAREN BURRILL

KATHY MINDERMAN

DIANE JOLGEN



# PEP CLUB







# PEP CLUB

*Autographs*



SPANISH CLUB—row 1: Donna Sinnott, Angie Jiminez, Sally Emley, Janice Whitty, Janell Denman, Elsa Anderson, Judy Ahlstrand. row 2: Susan Van Belle, Lue Rausch, Carol Paxton, Linda Kingsley, Karen Fair, Jeanne Woolen, Sharon Munson, Sharon Dry. row 3: Ken Little, Don Shove, Dave Halsted, Jim Swartz, David Jones, Leonard Anderson, Howard Rausch.



ROGERS SENATE—row 1: Jean Merewether, Lynn Martin, Evelyn Ferrel, Elizabeth Starks. row 2: Barbara Davidson, Sue Dickinson, Shirley Bacon, Leonard Anderson, Stan Stenersen.

LATIN CLUB—row 1: Judy Bemis, Vickie Cann, Sue Estes, Darlynn Johnston, Judi Borgarts, Sheila Richings, Gloria Sherman, Patty Libey. row 2: Richard Janish, Tom Gamble, Jerry Adams, Greg Shannon, Randy Garrett, Larry McDonald, Jim Roth.







### *Debate-Speakers Bureau*

Willy Macomber, Bill Jenkins, Lorraine Raymond, Gaye Mooney,  
Sue Estes, Ron O'Neel, Stan Stenerson, Jon Thaler.

HI-Y—row 1: Gerry Lindgren, Ken Hearron, Denny Shaw, Preston Prudente, Jay Molitor, Frank Phillips, Elliot Henry, Gary Roth, Bob Long. row 2: Ted Waldo, Arvid Anderson, Dave Shill, Jim Swartz, Bob Race, Dan Weis, Larry Mather, Rick Nelson, Len Long, Ray Robinson, Roy Wood. row 3: Tom Shill, Walt Pool, Al Walker, Jim Roth, Terry Reed, Gene Babcock, Larry Skinner.





F. B. L. A. row 1: D. Holmes, S. Anderson, J. Armstrong, P. Frink, D. St. John, S. McGinnis, J. Knight, P. Carmack, A. Smith, P. Neilson, C. Woicik, C. Rose, L. Scates, J. Hamilton. row 2: B. McBride, S. Koerper, L. Schrock, C. Steensma, S. Grover, P. Savage, C. Caird, J. Fullmer. row 3: M. Roath, P. Nyreen, C. Nugent, C. Cress, L. Clothier, S. Woods, J. Hall, V. Stewart, M. A. Miller, D. Harper, S. Severson, D. Breeden, P. Boyer, S. Larson, V. leaf, D. Shields, J. Woolen. row 4: J. Baump, G. Nordby, S. O'Brien, R. Joyce, J. Fockler, L. Brockway, M. Bellman, D. Billigmeier, K. Schoenwald, D. Cunningham, J. Lobeck.

F. B. L. A.—row 1: Phyllis Gilmore, Cheryl Littlefield, Betty Hamann, Elaine Neilson, Carleen Bliesner, Julie Suksdorf, Patti Foster, Marilyn Hastings, Lynne Mertes. row 2: Imogene Boling, Trudy Houger, Anita Mitchell, Laura Moser, Donna Mildes, Linda Gust, Alice Turnidge, Susan Kaczor, Pat Solheim. row 3: Jo Ann Hanson, Jennifer Gent, Pat Genoway, Cheryl Christensen, Linda Astleford, Lorna Johansen, Jacque Hansen. row 4: Carol Pugh, Valdyne Parkins, Gerri Bartlett, Janice Wagner, Sharon DeGraffenreid, Kathy Carter, Nita Dafler, Larry Hinton.



F. T. A.—row 1: Nancy Kilgore, Donna Sinnott, Carol Paxton, Gail Ostness, Mary McIver, Carol West, Meg Rich. row 2: Charles Brennan, Larry Skinner, Jerry Jones, Leonard Anderson, Evelyn Ferrel, Clydena Gibbs.



D. E. C. A.—row 1: Joan Carlson, Mary Workman, Jean Emery, Sandra Brown, Kay Schownwald. row 2: Linda Scates, Delores St. John, Maureen Pike, Cheryl Nelson, Judith Hays, Charles Sorenson. row 3: Linda Florin, Donna Partridge, Lorraine Brooks, Wayne Smulman, Gary Holmes, Ethel Barnes, David LeFors, Rod Dinsmore.





AVIATION—row 1: Mike Guay, Vernon Mahler, Jeff Guay, John Bouck, Larry Hagensen, Don Mason, Ken Chauvin, Bob Runyan, Steve Traut, Joe Hurst, Cody Hurst, Rick Sundland. row 2: Dick Deitrick, Don Anselmo, Gerald Wilson, Jerry Wilson, Ken Wendt, Donna Mildes, Sharlyne Koerper, Marita Killin, Lana Neubauer, Pat Carney, Lorraine Raymond, Mr. Joe Culler, assistant advisor. row 3: Mr. B. E. Toth; advisor Jack Powell, John Anderson, Craig Orchard, Charles Sinclair, Forrest Burton, Wayne Ingraham, Lance Haney, Gary Neubauer, Duane Coble, Nils Sather.



COSMIC CLUB—row 1: Rick Gossett, Tom Hays, Duane Coble, Ken Wendt, Lyle Hynes. row 2: Dennis Ahlstrand, Larry McDonald, Jim Swartz, Stan Stenerson, Leonard Anderson, Mike Fuller.



BIOLOGY CLUB—row 1: Gloria Sherman, Clydena Gibbs, Milah Frahm, Betty Bingham, Pam Reddy, Vickie Barnes, Cheryl Trevithick, Mary McIver. row 2: Steve Melville, Rickey Price, Ray Phillips, Larry Cotter, Diane Edwards. row 3: Jimmy Noe, John Bouck, Dennis Sykes, Bob St. Clair, Duane Thompson.



SKI CLUB—row 1: Mr. Bart Haggin, Carol Morris, Sandra Scognamiglio, Alberta McGhee, Gail Ostness, Mr. Aller. row 2: Gene Petefish, Mike Adair, Steve Traut, Tom Tauscher, Larry Phillips.



**THESPIANS**—row 1: Jackie Mas-sender, Marvin Brown, Dana Brown, Jim Brown, Mike Nutt, Karin Sim-onson. row 2: Barbara Hankel, Sharon Munson, Joyce Baump, Pat Gosk, Sheryl Stacy, Darlene Abell, Phyllis Stultz, Peggy Oakes, Sandy Galloway. row 3: Mr. Dale Bran-non, Larry Hueter, J. Olsen, Dave Wilson, Ken Hueter, Bill Docter-man, Jim Jamerson, Dan Ripley.

## Quill and Scroll

Ann Hegg  
Marvin Jack  
David Halsted  
Gay Mooney  
Leslie Powell



**SENIOR MATH CLUB**—row 1: Lou Ann New, Linda Rae Blum, Pat McAvoy, Marilyn Jones, Nalda Stussi, Linda Hoffman, Susan Bot-teen, Roberta Barr, Jean Mere-wether. row 2: Terri Reukauf, Lar-ry McDonald, Tom Hays, John Taylor, Preston Prudente, Dan Per-ry, Leonard Anderson, Nikki Brack-en, Karen Morton. row 3: Dale Kenney, Duane Coble, Larry Lam-bert, Jim King, Don Shove, Frank Phillips, Rich Sand, Nils Sather.



**LE CERCLE FRANCAIS**—row 1: Judy Botteen, Clara Delger, Susan Botteen, Jennifer Gent, Pattie Swatman, Lorna Clothier, Linda Patrick. row 2: Becky Gregerson, Evelyn Ferrel, Marilyn Jones, Marilyn Hill, Laura Losie, Sharon O'Brien, Judi Leaf, Karin Johanson, row 3: Karen Miller, Yvette Davenport, Judy Wilson, Virginia Seipp, Cindy Post, Barbara Corp, Sherry Lambert, Linda Hemstrom, Sharon Hundley. row 4: Fred Holbert, Dale Beaudreau, Don Keon, Larry Isitt, Preston Prudente.



**F. H. A.**—row 1: Marie Graham, Judy Martello, Kendra Olsen, Paul-ette Hann, Virginia Seipp, Imogene Boling, Connie Rast, Lynn Martin. row 2: Lynette Gunning, Diane Wimmer, Janice Brookman, Dorothy Wilson, Milah Frahm, Susan Graham, Lynda Gorman, Darlene Van Slyke, Susan Wendt.



**F. N. A.**—row 1: Lynne Miller, Sharon Tibbett, Gladys Nordby, Mary Roath, Judy Botteen, Janet Schroyer, Charlene Heisler, Jo Ann Hanson, Lou Ann New. row 2: Janet Bury, Jennifer Sutherland, Sue Wendt, Diane Wimmer, Linda Webster, Shirley Bacon, Nikki Bracken, Laura Losie, Gloria Archibald, Linda Joyce, Janice Seifert, Linda Douglas. row 3: Lynette Gunning, Karen Fair, Sue Mead, Marilyn Hill, Karen Venters, Cheryl Smith, Bonnie Doolittle, Jean Luke, Karen Burrill, Lynn Martin, Cathy Gray.





## R CLUB

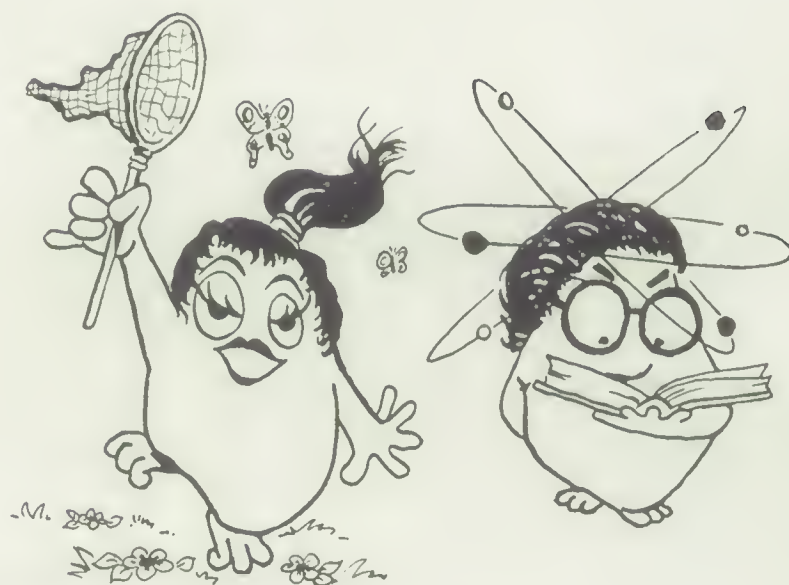
row 1: Don Gibson, Dave Hanson, Bob Aldrich, Ron Short, Jim Bowman, Ray Hass, Gary Spinnell, Arvid Anderson, Don Shove, Len Long, Denny Foland. row 2: Elliot Henry Bob Robertson, Sid Gabriel, Bill Pearson, Steve Coon, Jim Stentz, Mike Williams, Del Thompson, Bob Race, Mike Rhodes, Terry Hottman, Duane Bordwell. row 3: Butch Bircumshaw, Tom Carper, Bill Kenworthy, Kurt Miller, Rich Tucker, Jim Burnette, Terry Blue, Jim Schwartz, Gary Foland, Guy Curtis, Ken Stacy, Doug Bender.

FEMME SPORTETTES — row 1: Jeanette Williamson, Margaret Potter, Karen Morton, Nancy Kilgore, Carol Bleisner. row 2: Donna Cloe, Linda Campbell, Janice Witty, Patsy Keck, Alice Anderson, Dixie Wittkopf, Cheryl Southwell, Perry Hudson.





# *Autographs*



# *Autographs*





# SPORTS



# Varsity Football



Top Row—Lantz, Miller, Brown, Pierson, Hottman, Williams, Thompson, Kenworthy, Race, Welch. Second Row—Roth, Phillips, Herron, Skinner, Pool, Shill, Weis, Shaw, Foland, Short, Dixon. Third Row—Nelson, Pierce, Bowerman, Reed, Chumura, Tucker, Curtis, Wheeler, Bender, Stacy. Fourth Row—Wheeler, Burnett, Shove, Coon, Bowman, Aldrich, Gibson, Hanson, Hass, Robertson.



JIM BURNETT  
Most Inspirational



DON GIBSON  
Mr. Hustle



RON SHORT  
1st Team, Chronicle, Review



RAY HASS  
2nd Team, Chronicle



DAVE HANSON  
2nd Team, Chronicle



BOB ROBERTSON  
1st Team, Chronicle



Rogers is full of enthusiasm.



Watch Robertson shake him.

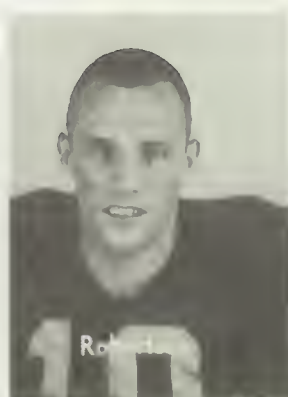


Rogers in action on our home field.





Dave Hanson, our quarterback, fighting for the ball.



Robert



Burnette



Swain



Foland



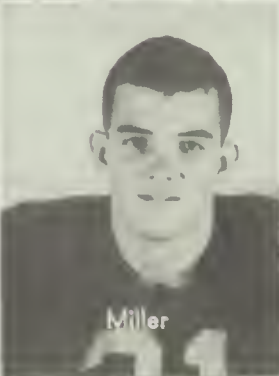
D.



Welch



Short



Miller



Pool



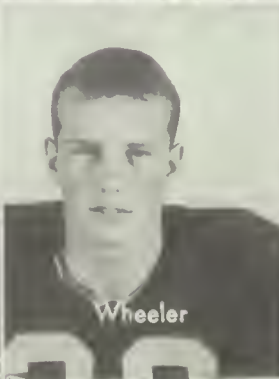
Herron



Reed



Coon



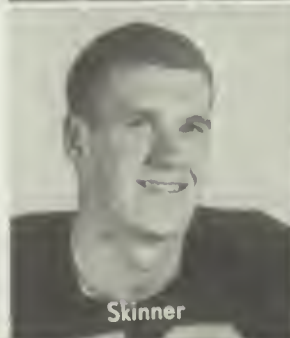
Wheeler



Stacy



Brown



Skinner



Nelson



Kenwood

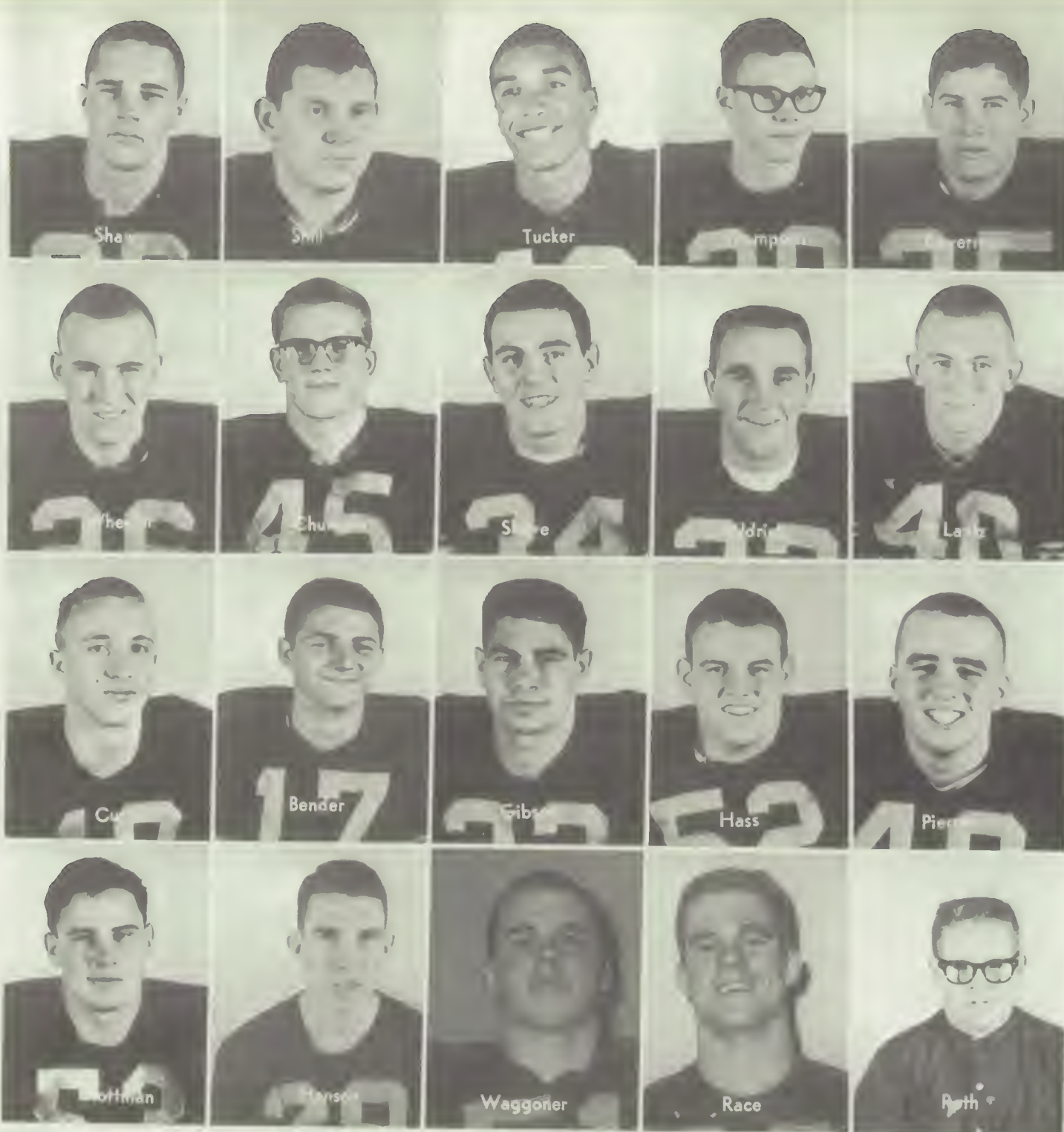


Pierre



Williams





A bird's-eye view.



Top Row—Gamble, Miller, Bottler, Swett, Short, Allen. 2nd Row—Ciesielski, Beer, Marden, Short, Young, Anderson. 3rd Row—Cate, Northcut, Okert, Lien, Long, Elliott. 4th Row—Berry, Holley, Royer, Wildman, Grant, Walker. 5th Row—Jenkins, Scognamiglio, Cress, Hilsabeck, Mather, Phillips. 6th Row—Grant, Stookey, Oster.

## “B” Squad







Naccarato



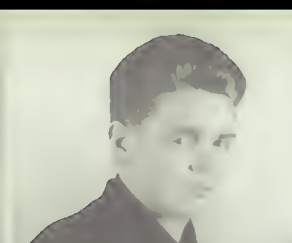
Coffield



Ludwig



Holinka



Haynes



Charbonneau



Harmon



Roth



Frederic



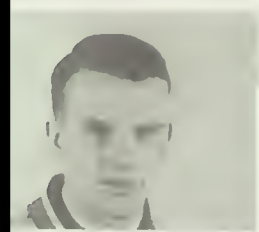
Carlson



Allen



Shannon



Ghan



George



Johnson



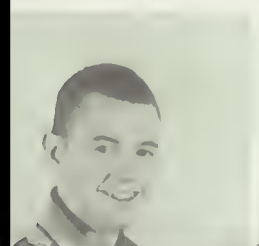
Krebs



Kaesmeyer



Appa



Halvorson



Arveson



Zorn



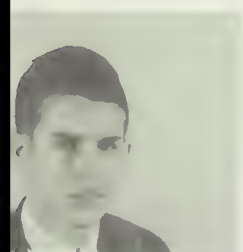
Bennett



Beck



Anderson



Jamerson



Marden

"Frosh"



Hanson

Tucker

Long

Hayes

Crawford

Kenworthy

Wood

Lindow

Turner

Lantz



# Varsity Basketball

Brown

Miller

Bircumshaw

Bowerman

McCormick

Foland

Stokey

Moseng

Lewis

Hagenson









Front Row—Elliott, McCormick, Miller, Swett, Hilsabeck. Second Row—Childress (mgr.), Wildman, Grant, Holley, Allen, Shores. Third Row—Uecker, Mather, Anderson, Stookey, Short.

## "B" Squad

"B" Squad in action.







Front Row—Kaesemeyer, Beck, Cram, Bennett, Coffield.  
Back Row—Carlson (mgr.), Halverson, Cozzetto, Langford, Allen, Ludwig.

## "Frosh"

"Frosh" in action.



# CROSS COUNTRY



GERRY LINDGREN  
Washington State Champion

1st Place Moses Lake Championship

1st Place Coeur d'Alene Championship

3rd Place Washington State Championship



Front Row—Mike Rhodes, Gerry Lindgren, Elliott Henry. Back Row—Arvid Anderson, Ted Waldo, Roy Robinson, Len Long.





Front Row—Dixon, Stentz, Nelson, Sands, Teats. Back Row—Davis, Race, Williams, Hottman, Shill. Shove.

## Varsity Wrestling

Varsity Wrestlers in action.





J. Burnett

D. Shove

T. Brown

D. Bowerman

G. Lindren

J. Swartz

E. Weatherman

# Returning

L. Reyerson

T. Waldo

A. Anderson

K. Little

J. Molitor

J. Jacobson

S. Stenerson

G. Foland







R. Dillon  
D. Cloe

D. Bordwell  
N. Stussi

B. Bircumshaw  
A. Coumont

B. Aldrich

# Spring Lettermen

J. Stempel  
L. Campbell

L. Gorman  
J. Muzzy

S. Hundley  
B. Gregerson

N. Bracken  
B. Hankel





## **HILLYARD BRANCH**

N. 5020 MARKET

MA 4-5221

**FRIENDLY BANKING . . .**

YOUR MONEY IS INSURED WHEN ENTRUSTED TO US

# **SEATTLE-FIRST NATIONAL BANK**

## **NORTH SPOKANE BRANCH**

E. 30 WELLESLEY

MA 4-5221





[illegible]











**Best Wishes**

to the

**Class of '63**

**HENLE STUDIO**

GARLAND THEATRE BUILDING

FA 5-3342

CONGRATULATIONS

and best wishes

to the

Senior Class of 1963

from

**The Lockwood Studio**

The Gift of a

**SARTORI**

Diamond can best  
symbolize your love!

... in a variety  
of sizes from  
\$59.50 and up—

Take a year to pay.  
No interest or carrying  
charges. Easy payments.

**N. 10 Wall St.**

*"On the East Side of Wall,  
between Riverside and Sprague."*

**SARTORI**

"Master Craftsmen in Jewelry"



Lorry Arnett receives the friendly service from Bonnie Donoian  
given to all, whether student or adults, who enter the—

**PIRATE CAFE**

Hamburgers 19c

Milk Shakes 24c

1701 E. Wellesley

HU 7-5635

*Grateaus*



Sandy Gallaway and Ken Hueter look at birthstone rings at Spakane's oldest jewelers.

## **DODSON'S**

**Downtown and Shadle Center**

W. 517 Riverside  
MA 4-4163

214 Shadle Center  
FA 5-2579



Jeanne Merewether

**Congratulations Seniors**

## **HAGEN PORTRAITS**

**See and Compare**

**Convenient Location**

**E. 1223 Empire**

**HU 9-0848**



Barbara Bently helps Marvin Jack and Treay Freeland find an interesting book.



## **HUXSOL DRUG STORE**

Nevada at Providence

HU 3-8524



Ruth Strasberg and Christie Abraham demonstrate their newly learned skills on Millie Ann Manning.

**If you seek the finest in beauty  
school training, you will find it at**

## **Esther's**

**School of Beauty Culture, Inc.**

**Inland Empire's Leading Beauty School**

**223 N. Post**

**RI 7-3088**



John Rogers grads select KBU for advanced training in business in such courses as:



Business Administration

Secretarial

Medical Secretarial

Electronic Data Processing

Bookkeeping

Stenographic

After graduation these individuals will be able to take advantage of the Free Lifetime Employment Department that is available to all KBU graduates.

**Employable Personnel - - - - Our Most Important Product**

**KINMAN BUSINESS UNIVERSITY**

S. 110 Howard

Spokane, Washington

TE 8-3521

## **A Word of Congratulations to the Graduate**

You've worked toward a goal and made it. You've learned that you get in proportion to what you give. Now, as you move ahead toward new objectives, you take with you the good wishes of one thousand employees of

**The Washington Water Power Company**

*Investor owned, helping build your community*



## *Burchett Studio*

"MAKERS OF FINE PORTRAITS"

SOUTH 13 HOWARD STREET • TELEPHONE MADISON 4-2821

SPOKANE 4, WASHINGTON

YOUR NEIGHBORHOOD PRESCRIPTION  
DRUGGIST

SCHOOL SUPPLIES

MAGAZINES AND TOILETRIES

PHOTO SUPPLIES

DEVELOPING AND PRINTING

BROWN AND HALEY CANDIES

*Free Prescription Delivery*

## **Nevada Street Pharmacy**

North 4602 Nevada • HU 3-4632 or HU 7-4144



Ann Hegg samples the friendly service and fine quality products at Blodgett's.

**Buy  
Better  
At  
BLODGETT'S**

CONGRATULATIONS  
AND  
BEST WISHES  
TO THE  
GRADUATING SENIORS

*Dorian*  
PHOTOGRAPHY

South Nine Post Street

Spokane, Washington

MA 4-6815





Try on the Excalibur Shop... it fits the most discriminating young men.

**Harvey's**

MEN'S AND BOYS' SHOP

317 Northtown

HU 7-1616

Smart Students Shop at - - -

**Le Roi's**

*Clothing and Shoes  
Styled for the Teen  
Customer.*



**GEORGE  
ELMER BROWN**



**Real Estate**



**Insurance**

**N. 5202 Market Street**



Meet Me at the  
**NORTH POLE**

THICKEST SHAKES IN TOWN  
Home of the Famous Belly Buster Burger

N. 3818 Nevada

HU 7-0132

*Congratulations*



A wealth of health  
comes from  
nature's  
goldmine.

**DARIGOLD**

CONGRATULATIONS

From

**SQUIRT NESBITT CO.**

Bottlers of

**Squirt**

**Hires Root Beer**

**Double Cola**

**Tru Flavors**

**Bubble Up**

**Nesbitt Orange**



**MADREN BROS.**

LARK  
AVANTI

HAWK  
CRUISER

HOME OF THE  
LARK

N. 5303 Market

HU 7-1626





Marcia Laakabaugh is demonstrating the fine quality of a White machine.

## THIS IS IT!

Here's the top value

### WHITE SEWING CENTER

You've Seen Advertisements

SIT DOWN - - TRY IT!

And Feel the New Thrill in Sewing

### WHITE SEWING CENTER

New & Used Sewing Machines and Vacuum Cleaners

1st at Lincoln

RI 7-4562



WE DELIVER FUEL OILS

Congratulations to the  
Graduating Class  
of 1963

"For the best in home heating comfort"

## HEADLIGHT OIL COMPANY

N. 4512 Market Street

Phone HU 7-1654

Complete Line of Gull,  
Hewescraft, Reinell.  
**BOATS**

Evinrude and Volvo  
**MOTORS**

EZ Loader and Holsclaw  
**TRAILERS**

Apache Camp Trailers



Gaye Maaney and Terry Reed prepare for Summer Sports and Fun.

Marine Accesories

Camping Supplies

Hunting Equipment

Fishing Tackle

Bowling Supplies

Model Supplies

Athletic Goods

Barbells and Dumbbells

## Odegard's Sport Center and Marina

N. 5005 Market

In Hillyard

HU 7-9257

# LIBERTY MARKET and GROCER STORE

HILLYARD'S IGA STORE  
N. 5125 MARKET

HU 7-8602

## FREE PARKING WHILE SHOPPING



LOW PRICES EVERY DAY



SERVING THE HILLYARD COMMUNITY FOR  
OVER 35 YEARS



NORM WILLIAMS, Owner and Manager

GOODBYE  
AND  
CONGRATULATIONS

To the Seniors of 1963 . . .



## THE CRESCENT

Photography Studio

1ST FLOOR

To those who will be  
Seniors of 1964

P.S. A photograph is a part of forever . . .  
and we take our responsibility of making  
your photograph very, very seriously.

HELLO  
AND  
BEST  
WISHES



Miss Sally Bennett wishes to say  
Congratulations, seniors, for . . .

*BRICKNER'S STUDIO*

She encourages the seniors for '64  
to have their pictures taken during  
the summer and receive a Free  
Gift.

## *Brickner's Studio*

E. 538 Kiernan

Spokane, Wash.

HU 7-5884

# *Autographs*













